



E



C



G

TALK

CONSIDERATIONS FOR SEC 3 SUBJECT COMBINATION

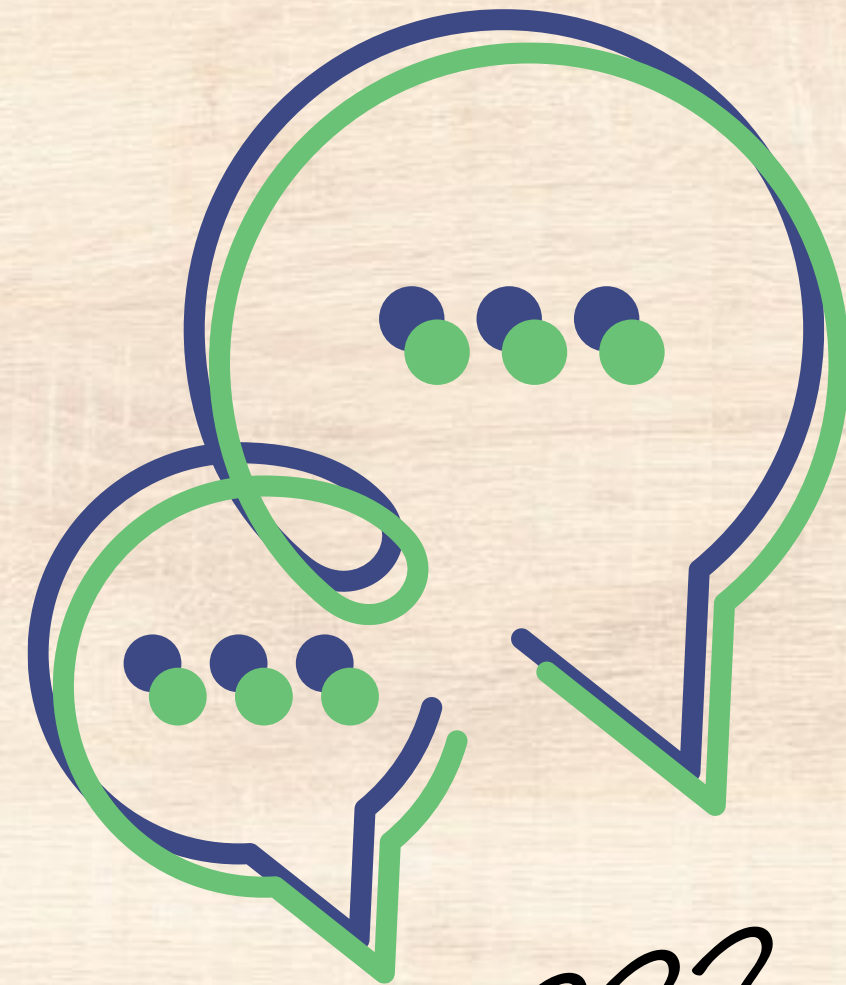
14 Oct 2024

by Ms Priscilla Chong, ECG Counsellor



TALK TO THE PERSON BESIDE YOU

Have you decided on
which Subject
Combination option
to take?
Yes/No and why?



???



POSSIBLE QUESTIONS YOU MAY HAVE AT THIS POINT...



"Which subject combination should I take?"

"What will life be like after completing my secondary school studies?"

"What are the pre-requisites or subjects required for the courses/institutions/job roles I'm interested in?"



Considerations for what to study

Which subject combi should I take?



Interests



Personality



Values



Strengths/Skills



Things you like to do



Experiences you enjoy



Key Considerations in Choosing Subject Combination

Interests

What subjects do your child enjoy and why?



Strengths

What subjects are your child good at?



Aspirations

What are your child's education and career goals?

5

Total Curriculum Load

What might be a suitable number and mix of subjects that your child can manage, taking into consideration the nature and coursework of the subjects?



Where do you want to go?

There are many multiple pathways to achieve your aspirations, and diverse opportunities to explore and learn throughout life.



Secondary 2

Selection of Subject Combination

Secondary 4/5

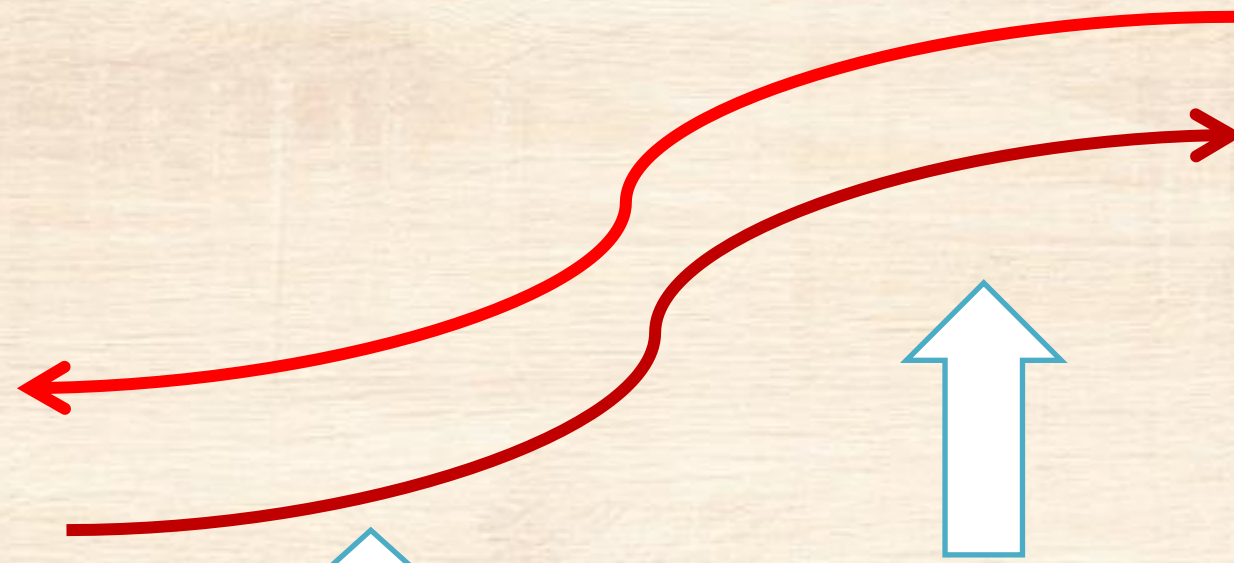
Choice of JC/MI, Polytechnic or ITE

Post-Tertiary

Further education or the world of work

Adulthood

Career Aspiration



Junior College or Millenia Institute

Prepares students for the GCE 'A' level examination or International Baccalaureate Diploma Programme (IBDP).

Polytechnics

Trains students with relevant skills for the workplace in a knowledge-based economy.

What are the post-sec pathways available?

Arts Institutions (Lasalle or NAFA)

Allows students with aptitude and interests to pursue the creative arts at the tertiary level.

Institute of Technical Education


Equips students with technical knowledge and skills relevant to the industry.



GCE A levels or IB Diploma

Polytechnic or Arts Institution
Diploma

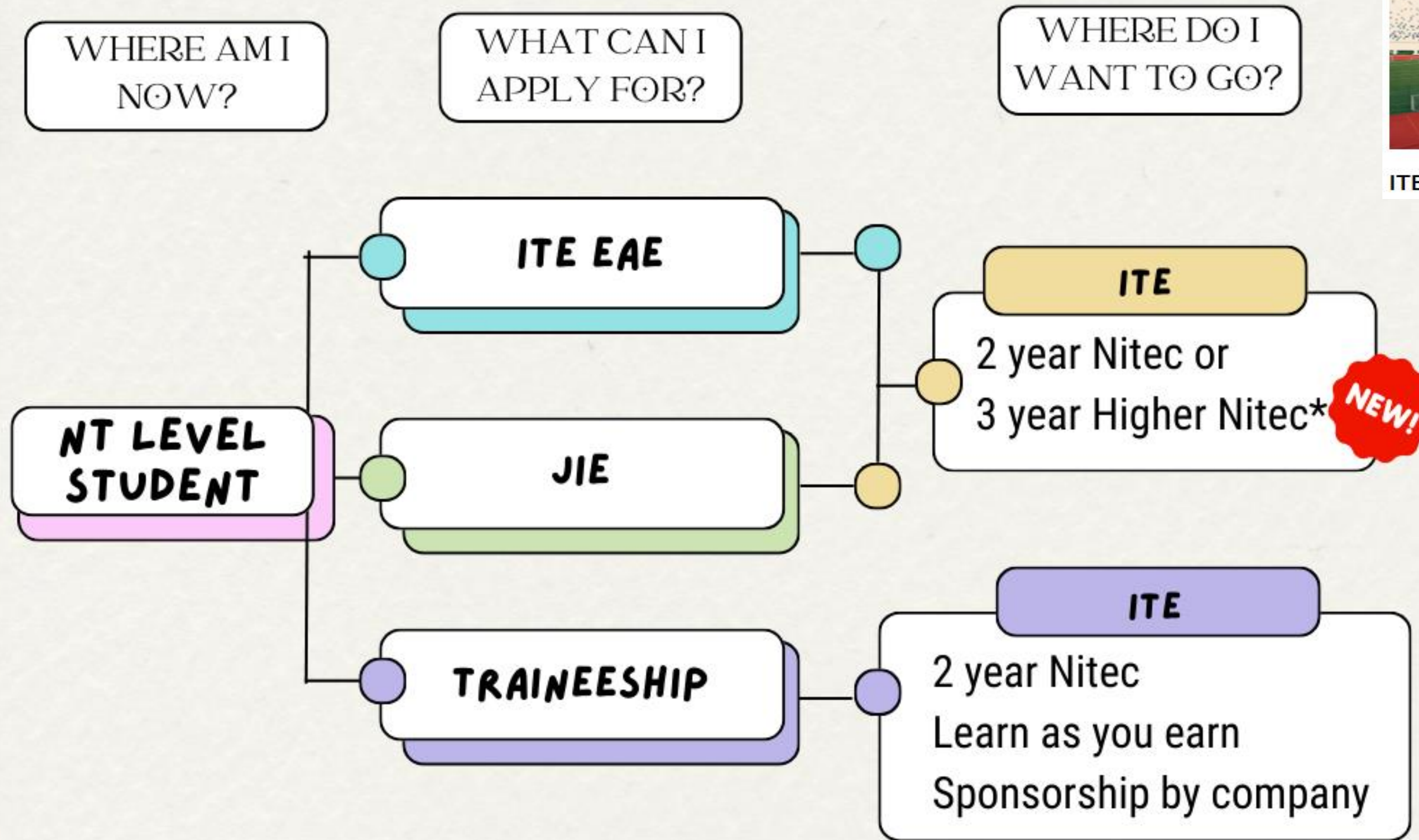
Higher Nitec from ITE

- 
1. Use the MOE CourseFinder or MOE Post-Secondary Institutions to find out more about the various entry requirements and subject pre-requisites
 2. The next few slides provide a brief summary – refer to the one relevant to you

What are the pre-requisites or subjects required for the courses/institutions I'm interested in?



Post N(T) level Pathways



ITE College Central



ITE College West



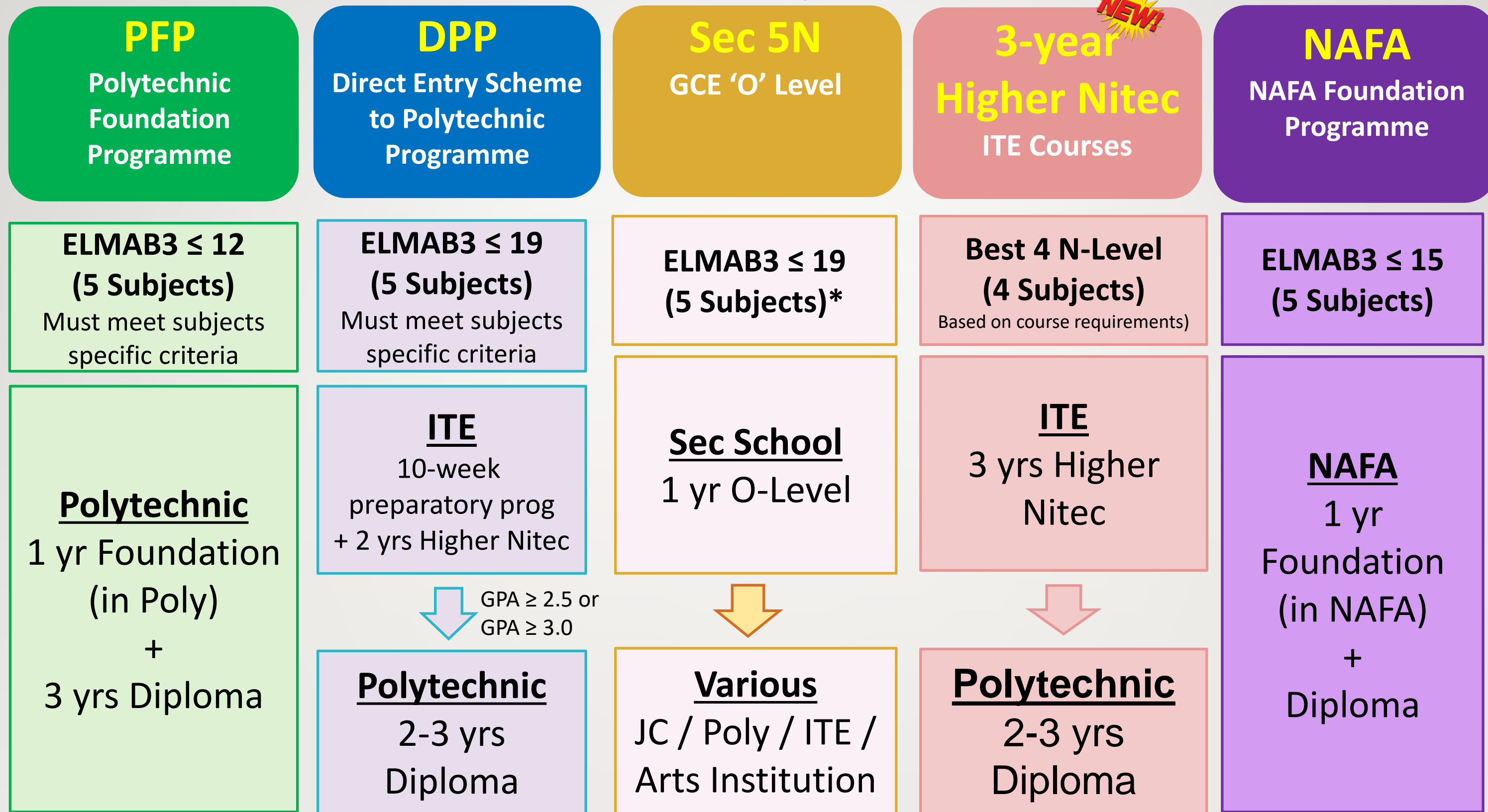
ITE College East

*By AY2026, all 2-year Nitec courses will be streamlined into a 3 year Higher Nitec Programme under the enhanced ITE Curriculum.

Official(Open)/Non-Sensitive



Education Pathways for Sec 4NA



*Must obtain at least a Grade 5 for all subjects used in computation



O-LEVEL PATHWAYS

JC/MI

- **JC: L1R5 ≤ 20**
- **MI: L1R4 ≤ 20**
- Posting by merit is based on:
JC: Net L1R5 / MI: Net L1R4
- Meet Subject Requirements for JC/MI admission:

Subject	Requirement
Eng Lang	A1 to C6
Mother Tongue	A1 to D7
Higher MT	A1 to E8
MT Syllabus 'B'	Merit or Pass
Math/A Math	A1 to D7

Students who do not meet the subject requirements may still be eligible for conditional admission to JC/MI, subject to other requirements.

LASALLE/NAFA

LASALLE

- **4 GCE O-Level subjects, excluding English ≤ 25**
- English - Grade C6 or better

Nanyang Academy of Fine Arts

- **4 GCE O-Level subjects, excluding English ≤ 25**
- English - D7 or better for Dance and Music courses, and C6 or better for all other courses

*Students should submit their applications directly to these institutions.

O-LEVEL STUDENT

POLYTECHNIC

- **Net ELR2B2-A/B/C/D ≤ 26** (except **Diploma in Nursing ≤ 28**)
- Meet Minimum Entry Requirements (MER) of the course selected
- Posting by merit is based on:
Net ELR2B2-A/B/C/D, depending on the course selected

ITE 2-YEAR HIGHER NITEC

- **Meet Minimum Entry Requirements (MER) of the course selected**
- Posting by merit is based on:
Net ELB4-A, ELR1B3-B, ELR2B2-C, depending on the course selected

*There are 3-year Higher Nitec Courses available.



Indicative Grade cut-off for H2 Math and H2 Sciences

- Info taken from selected JCs' websites

Indicative Grade cut-off for various subjects at O levels				
	H2 Math	H2 Chem	H2 Phy	H2 Bio
ACJC	Recommended to have min B4 for A.Math	Recommended to have Pass in Pure Chem OR min. B3 for Comb Sci	Recommended to have Pass in Pure Phy OR min. B3 for Comb Sci	Recommended to have Pass in Pure Bio OR min. B3 for Comb Sci
EJC	B3 for A.Math	B3 for Pure Chem OR A1 for Comb Sci	B3 for Pure Phy OR A1 for Comb Sci	B3 for Pure Bio OR A1 for Comb Sci
NYJC	Students should have the requisite knowledge to offer the subject at A-Level and to cope with the demands of the A level curriculum			
SAJC	B3 for A.Math	B3 for Pure Chem OR A2 for Comb Sci	B3 for Pure Phy OR A2 for Comb Sci	B3 for Pure Bio OR A2 for Comb Sci
VJC	Students should have the requisite knowledge to offer the subject at A-Level and to cope with the demands of the A level curriculum			

Example: Subject Combi offered at EJC (Science)

Choose between
(i) 3H2+1H1 content subject
OR
(ii) 4H2 content subjects

For both options, you must choose ONE contrasting (humanities) subject



Science

2024 Subject Combinations

Code	Humanities and the Arts	Mathematics and Sciences		
S1-1	H2 Economics	H2 Biology	H2 Chemistry	H2 Mathematics
S1-2	H2 Geography			
S1-3	H2 History			
S1-4	H2 Literature			
S1-5	H2 Art			
S1-6	H2 Music			
S1-7	H2 China Studies in Chinese			
S1-8	H2 Mother Tongue Language and Literature			
S1-9	H2 Translation			
S1-10	H2 French / German / Japanese / Spanish			
S1-11	H1 Economics			
S1-12	H2 Knowledge and Inquiry			



Example: Subject Combi offered at EJC(Science)

Choose between
(i) 3H2+1H1 content subject
OR
(ii) 4H2 content subjects

For both options, you must choose ONE contrasting (humanities) subject

S2-1	H2 Economics	H2 Physics	H2 Chemistry	H2 Mathematics
S2-2	H2 Geography			
S2-3	H2 History			
S2-4	H2 Literature			
S2-5	H2 Art			
S2-6	H2 Music			
S2-7	H2 China Studies in Chinese			
S2-8	H2 Mother Tongue Language and Literature			
S2-9	H2 Translation			
S2-10	H2 French / German / Japanese / Spanish			
S2-11	H1 Economics			
S2-12	H2 Knowledge and Inquiry			

Example: Subject Combi offered at EJC (Science)

Choose between
(i) 3H2+1H1 content subject
OR
(ii) 4H2 content subjects

For both options, you must choose ONE contrasting (humanities) subject

eunoia JUNIOR COLLEGE		Science			2024 Subject Combinations
Code	Humanities and the Arts	Mathematics and Sciences			
S3-1	H2 Economics	H2 Physics	H2 Further Mathematics	H2 Mathematics	
S3-2	H2 China Studies in Chinese				
S3-3	H1 Economics				
Code	Humanities and the Arts	Mathematics and Sciences			
S4-1	H2 Geography	H2 Economics	H2 Chemistry	H2 Mathematics	
S4-2	H2 History				
S4-3	H2 Literature				
S4-4	H2 Translation				
S4-5	H2 Geography	H1 Economics	H2 Chemistry	H2 Mathematics	
S4-6	H2 History				
S5-1	H2 Geography	H2 Economics	H2 Physics	H2 Mathematics	
S5-2	H2 History				
S5-3	H2 Literature				
S5-4	H2 Translation				
S5-5	H2 Geography	H1 Economics	H2 Physics	H2 Mathematics	
S5-6	H2 History				



Example: Subject requirements for Poly admission

AI & Data Engineering

A unique engineering diploma that integrates both AI and data engineering competencies, and equips learners with skills covering the entire lifecycle of scalable AI solutions. The curricula lead to professional AI accreditation and ensure industry relevance with robust delivery and internship.

📄 Course code : C31

🏫 Nanyang Polytechnic

✅ Admission type: JAE , DAE , JPAE , Poly EAE , PFP

✅ 2024 JAE ELR2B2-C aggregate: 6-10

📅 Course duration : 3 years

For O-Level students seeking admission through JAE ^

Subject	Grade
English Language	1-7
Additional Mathematics/Mathematics	1-6
Any one of the following subjects	1-6
<ul style="list-style-type: none">• Biology• Biotechnology• Chemistry• Computing/Computer Studies• Design & Technology• Electronics/Fundamentals of Electronics• Physics• Science (Chemistry, Biology)• Science (Physics, Biology)• Science (Physics, Chemistry)	



PAYA LEBAR METHODIST GIRLS' SCHOOL (SECONDARY)

MOE CourseFinder & SchoolFinder

Explore school information on
Junior Colleges and Millenia
Institute
(e.g. CCA, subjects, programmes):
[SchoolFinder](#)

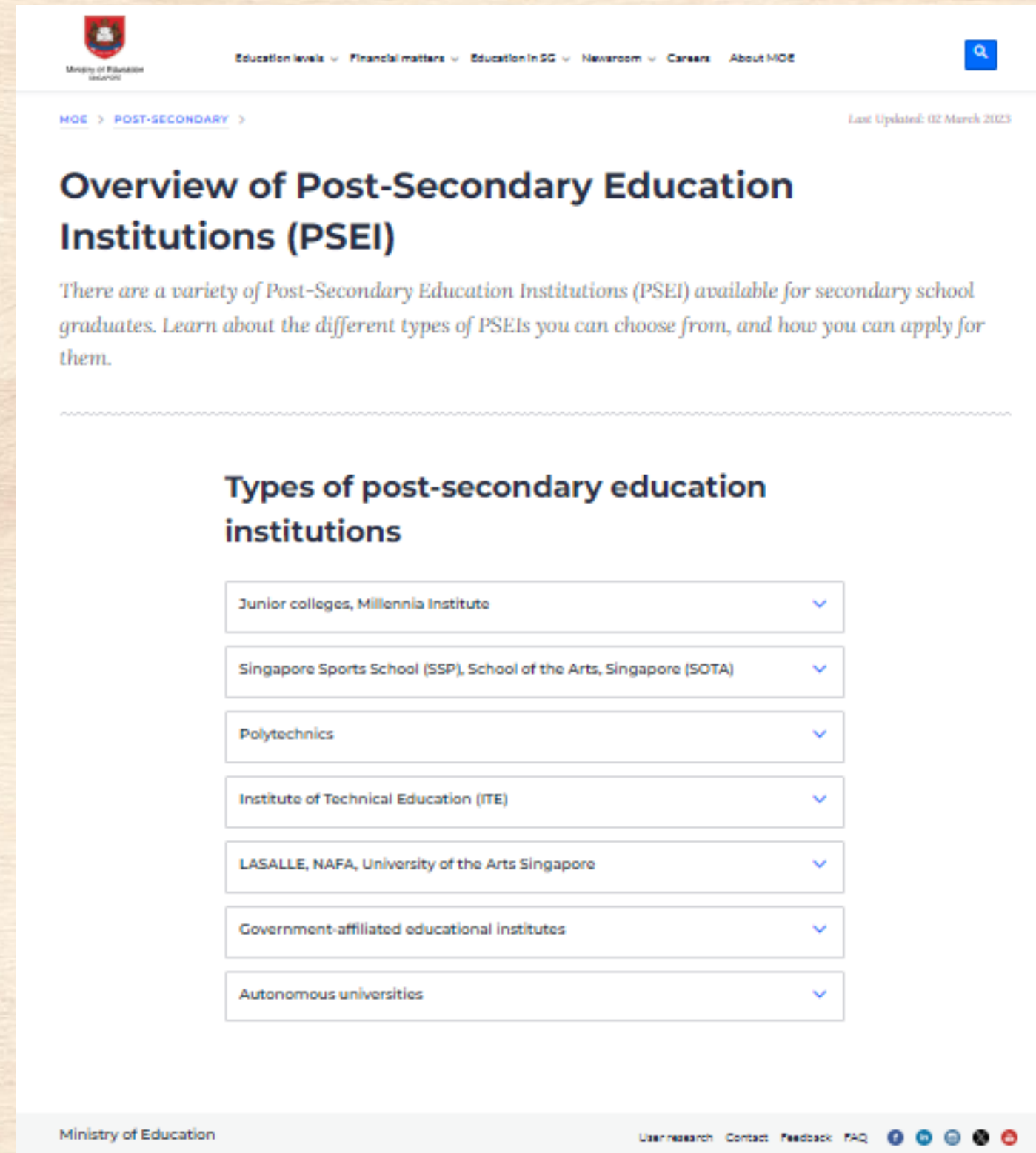


Explore post-secondary
courses offered by
Polytechnics and ITE:

[CourseFinder](#)



Overview of Post-Sec Institutions



Ministry of Education

Education levels | Financial matters | Education In SG | Newsroom | Careers | About MOE

MOE > POST-SECONDARY > Last Updated: 02 March 2023

Overview of Post-Secondary Education Institutions (PSEI)

There are a variety of Post-Secondary Education Institutions (PSEI) available for secondary school graduates. Learn about the different types of PSEIs you can choose from, and how you can apply for them.

Types of post-secondary education institutions

- Junior colleges, Millennia Institute
- Singapore Sports School (SSP), School of the Arts, Singapore (SOTA)
- Polytechnics
- Institute of Technical Education (ITE)
- LASALLE, NAFA, University of the Arts Singapore
- Government-affiliated educational institutes
- Autonomous universities

Ministry of Education | User research | Contact | Feedback | FAQ



<https://www.moe.gov.sg/post-secondary>



PAYA LEBAR METHODIST GIRLS' SCHOOL (SECONDARY)

Continue to work on your Education and Career Plan!

- Explore and Research on
 - education pathways, educational institutions and courses
 - industries and job roles that can lead to my career aspirations

- Discover my Values, Interests, Personality, Skills (V.I.P.S) and Strengths and how I can contribute to the community/society



- Develop skills & gain experiences
- Develop S.M.A.R.T goals & action plans
- Approach significant others to consult
- Be open-minded and prepared for possible opportunities
- Be adaptable and open-minded to tap on new opportunities and possibilities
- Continue to learn and grow

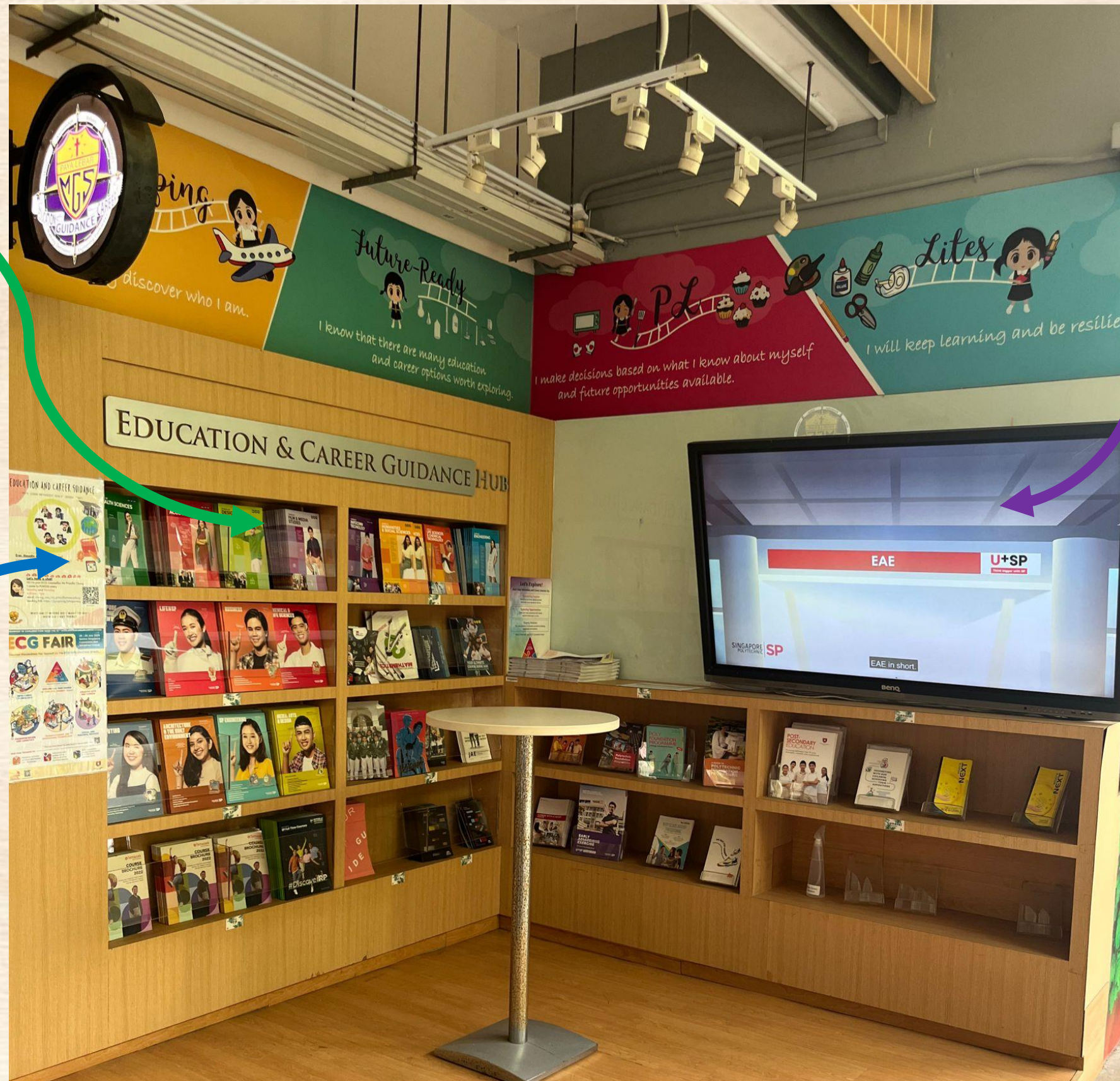
Education & Career Guidance

WHERE TO FIND MORE INFORMATION?

ECG HUB NEAR CANTEEN/CARPARK

Information booklets from Post-Sec institutions (Polytechnics, Junior Colleges, ITE, Lasalle, NAFA etc)

ECG counsellor, Ms Chong's contact information



Videos of different ECG-related content, updated termly



BOOK AN APPOINTMENT WITH OUR ECG COUNSELLOR



Tuesday and Thursday

8.30am – 5pm

Email: chong_soo_hui_priscilla@moe.edu.sg

Booking form: <https://go.gov.sg/plmgss-ecg>



PAYA LEBAR METHODIST GIRLS' SCHOOL (SECONDARY)

LIBRARY SHAKESPEARE ROOM



THANK YOU!

