

*Welcome Back PL Lites!*

**2021 SINGAPORE-CAMBRIDGE  
GCE N(A) & N(T) EXAMINATIONS**

**17 DEC 2021 THURS, 2 PM**





# TODAY'S PROGRAMME

Items		By
Welcome & General Information		Ms Ruth Das
Release of the 2020 GCE N-Level Results		Ms Amy Ng / Mrs Selina Lum
Release of Result Slips & relevant forms & materials		Form Teachers
Break-out ECG Info Sessions:		
<b>A</b>	<ul style="list-style-type: none"><li>• 4NT students application to ITE</li></ul>	Mdm Zalena
<b>B</b>	<ul style="list-style-type: none"><li>• 4NA students application to DPP and Sec 5NA</li></ul>	Mrs Selina Lum / Mr Tan Tiah Hui
<b>C</b>	<ul style="list-style-type: none"><li>• 4NA students application to PFP</li></ul>	Mrs Koh Siping
<b>D</b>	<ul style="list-style-type: none"><li>• Appeals / Review of grades</li><li>• Repeat of 4NA</li><li>• Amendments (if any) by students on documents (e.g. Certificates)</li></ul>	Mr Lee Wei Te

# BREAKOUT ECG INFO SESSIONS

Time & Location	Grouping	Teacher IC
3.15 pm – 4 pm Chemistry Lab 2	Group A <ul style="list-style-type: none"> <li>Meeting of 4NT students: JIE JIT - ITE Courses and Scholarships and the ITE Traineeship courses</li> </ul>	Mdm Zalena
3.15 pm – 4 pm Chemistry Lab 1	Group B <ul style="list-style-type: none"> <li>Meeting of 4NA DPP students and students interested to move on to Sec 5 NA</li> </ul>	Mrs Selina Lum/ Mr Tan Tiah Hui
3.15 pm – 4 pm Physics Lab 2	Group C <ul style="list-style-type: none"> <li>Meeting of 4NA Potential PFP students and Potential Scholarships students</li> </ul>	Mrs Koh Si Ping
3.15 pm – 4 pm Physics Lab 1	Group D <ul style="list-style-type: none"> <li>Appeals / Review of grades</li> <li>Repeat of 4NA</li> <li>Amendments by students on documents (eg. Certs)</li> </ul>	Mr Lee Wei Te

REALIZE THAT YOU  
ARE NOT ALONE,  
THAT WE ARE IN THIS  
TOGETHER AND MOST  
IMPORTANTLY THAT  
THERE IS HOPE.

Deepika Padukone





# No matter the circumstances, there is always a way forward.

## Stop

- Stop any unhelpful thoughts or actions that would make you more upset.
- Inhale deeply and exhale slowly using 10 counts as you relax your muscles. Acknowledge your emotions.

## Think

- Think through the different options that are available for you. Keep things in perspective.
- Remember that the N-Level is just one part of your life journey and not the destination.

## Do

- Approach a trusted adult and seek his/her help. Have a conversation with this person about what would be best for you.
- Make a decision based on your options and take action.

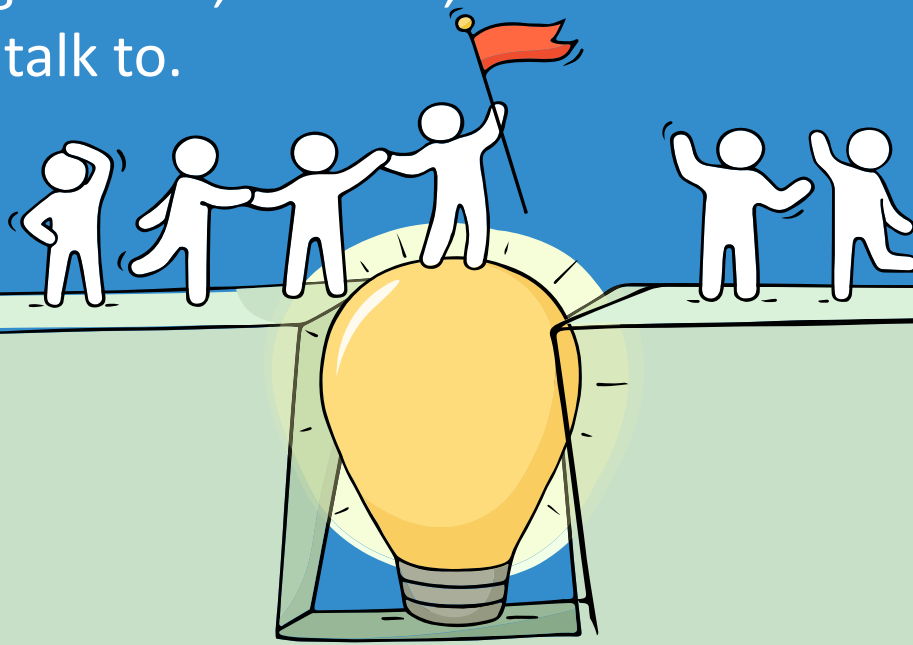
When you receive your results, you may feel overwhelmed by emotions.

Managing these emotions well will allow you to stay calm and make rational decisions.



# Reaching out for help is a sign of strength, not weakness.

If you have any concerns or are not coping, do reach out to someone you trust and speak with them. It could be a parent/guardian, teacher, School Counsellor or a friend that you can talk to.





# Supporting Your Friend

We may each experience different emotions upon receiving the results. You can share your friends' joy by congratulating them or give words of encouragement to friends who may be disappointed with their results.



**Keep a lookout for your friends in distress. You can support them in the following ways:**

**Calm them down**

“Are you ok? Calm down, take a few deep breaths.”

**Hear them out**

“I am here to listen to you.” or “I am here for you.”

**Empathise with them**

“It sounds like you are disappointed.” or “It seems like this is a difficult time for you.”

**Encourage seeking help**

“Thanks for sharing. Why don’t we speak with a trusted adult who can help?”

**Refer your friend to a trusted adult**

“Let’s talk to our teacher or our School Counsellor so they can better support you. Do share your feelings with your parents/guardians too. Would you like me to accompany you?”



# Help is readily available for you.

There are other hotlines and chats available if you are more comfortable seeking help using these platforms.



## SOS

**SOS** provides round the clock emotional support for those in distress, thinking of suicide or affected by suicide. This service is manned by trained volunteers.

Call: **1-767 or 1800-221-444**  
(24-hour helpline)

There are also alternative avenues for emotional support through email and text messaging.

Email: **pat@sos.org.sg**  
(Response within 48 hours)


SOS Care Text: **www.sos.org.sg**  
(6pm – 6am on Mon to Thu and 6pm to 11:59pm on Fri)

## Community Health Assessment Team (CHAT)

If you experience prolonged difficulties, CHAT provides personalised and confidential mental health checks and face-to-face consultation for youth aged 16 to 30. To speak with a youth support worker, you can:

Visit: **CHAT Hub at \*SCAPE, #05-05** or  
Call: **6493 6500/ 6501** or  
Email: **CHAT@mentalhealth.sg**





# Help is readily available for you.

There are other hotlines and chats available if you are more comfortable seeking help using these platforms.

## eC2

**eC2** is an e-Counselling Centre where you can talk to a trained counsellor about the issues you are facing, right where you are.

Youths may chat with a counsellor online at: [www.ec2.sg](http://www.ec2.sg)

Monday – Friday  
(Excluding Public Holidays): 10am – 12pm & 2pm – 5pm

## TOUCHline

**TOUCHline** is a helpline to provide youths with emotional support and practical advice.

Call: **1800 3772252**

Monday – Friday  
(Excluding Public Holidays): 9am – 6pm

## mindline.sg

**mindline.sg** is an online platform that provides tools, tips and resources to help you manage your health and well-being. Explore and find out how you can improve your mental well-being and support your friends too.

Find out more: [www.mindline.sg](http://www.mindline.sg)





# WHAT DO I HAVE TO DO?

1. Refer to Admission Booklet 2022
2. Open **both** Results Slip and Form N
3. List eligible ITE courses and choice of ITE campus
4. Calculate points based on selected ITE courses
5. Take note of ITE course criteria
6. Take note of timelines for different phase of applications
7. Ensure that your personal particulars (**valid email address, mobile number, residential address**) are updated for the application of courses online. Passwords, interview shortlist results and the letter of enrolment will be sent to your email address.

# DOCUMENTS GIVEN OUT TODAY

**SINGAPORE-CAMBRIDGE GENERAL CERTIFICATE OF EDUCATION  
ORDINARY LEVEL  
RESULT SLIP**

YEAR OF EXAM: \_\_\_\_\_

CANDIDATE: \_\_\_\_\_

NRIC/FOREIGN IDENTIFICATION NO: \_\_\_\_\_

SCHOOL: \_\_\_\_\_

INDEX NO: \_\_\_\_\_

SUBJECT	GRADE NUMERICAL	GRADE ALPHABETICAL	LANGUAGE MEDIUM	EXAMINING AUTHORITY
ENGLISH LANGUAGE	THREE	B	ENGLISH	CAMBRIDGE
COMBINED HUMANITIES	THREE	B	ENGLISH	CAMBRIDGE
GEOGRAPHY	FOUR	B	ENGLISH	CAMBRIDGE
MATHEMATICS	SEVEN	D	ENGLISH	CAMBRIDGE
SCIENCE/CHEMISTRY, BIOLOGY	SIX	C	ENGLISH	CAMBRIDGE
PRINCIPLES OF ACCOUNTS	THREE	B	ENGLISH	CAMBRIDGE
CHINESE	FIVE	C	CHINESE	SINGAPORE
CHINESE (ORAL/AURAL)	PASS	-	CHINESE	SINGAPORE

NO. OF SUBJECTS RECORDED: 7 NO. OF SUBJECTS GRADED 4 OR BETTER: 8

EX-23A (Jan 2017) THIS IS NOT A CERTIFICATE. PLEASE REFER TO EXPLORATORY NOTES ON THE REVERSE SIDE.

CCA Cert

**PAYA LEBAR METHODIST GIRLS' SCHOOL (SECONDARY)**

CCA Candidates for Secondary  
For Year 2017 Page: 1

Name: \_\_\_\_\_ Class: \_\_\_\_\_

Leadership	Enrichment	Achievement	Participation	Service	Total Points	Grade	Bonus Points
1	2	3	4	5	22	A1	2
Ex-Contributor Activities Summary							
CCA	Event Completion	Investment Ratio	Year	1	2	A	1
MPCC	Area 1 Challenge Street	Member Represented School At Inter School Competition Organised By US-MG	2013				
	Area 1 Challenge Street	Was 1st Placing / Gold Award At Inter School Competition Organised By US-MG	2013		3		
PHOTOGRAPHY CLUB							
	Member		2014			1	
	Member		2015			1	
	Member		2016			1	
	Member		2017			1	
	Member		2018			1	
	Member		2019			1	
	Member		2020			1	
	Member		2021			1	
	Member		2022			1	
	Member		2023			1	
	Member		2024			1	
	Member		2025			1	
	Member		2026			1	
	Member		2027			1	
	Member		2028			1	
	Member		2029			1	
	Member		2030			1	
	Member		2031			1	
	Member		2032			1	
	Member		2033			1	
	Member		2034			1	
	Member		2035			1	
	Member		2036			1	
	Member		2037			1	
	Member		2038			1	
	Member		2039			1	
	Member		2040			1	
	Member		2041			1	
	Member		2042			1	
	Member		2043			1	
	Member		2044			1	
	Member		2045			1	
	Member		2046			1	
	Member		2047			1	
	Member		2048			1	
	Member		2049			1	
	Member		2050			1	
	Member		2051			1	
	Member		2052			1	
	Member		2053			1	
	Member		2054			1	
	Member		2055			1	
	Member		2056			1	
	Member		2057			1	
	Member		2058			1	
	Member		2059			1	
	Member		2060			1	
	Member		2061			1	
	Member		2062			1	
	Member		2063			1	
	Member		2064			1	
	Member		2065			1	
	Member		2066			1	
	Member		2067			1	
	Member		2068			1	
	Member		2069			1	
	Member		2070			1	
	Member		2071			1	
	Member		2072			1	
	Member		2073			1	
	Member		2074			1	
	Member		2075			1	
	Member		2076			1	
	Member		2077			1	
	Member		2078			1	
	Member		2079			1	
	Member		2080			1	
	Member		2081			1	
	Member		2082			1	
	Member		2083			1	
	Member		2084			1	
	Member		2085			1	
	Member		2086			1	
	Member		2087			1	
	Member		2088			1	
	Member		2089			1	
	Member		2090			1	
	Member		2091			1	
	Member		2092			1	
	Member		2093			1	
	Member		2094			1	
	Member		2095			1	
	Member		2096			1	
	Member		2097			1	
	Member		2098			1	
	Member		2099			1	
	Member		2100			1	

OTHER SPECIAL EVENTS: ACES Day Participated in Inter-School Activities 2013

Result Slip

**MINISTRY OF EDUCATION  
REPUBLIC OF SINGAPORE**

**UNIVERSITY of CAMBRIDGE  
International Examinations**

**SINGAPORE-CAMBRIDGE GENERAL CERTIFICATE OF EDUCATION  
ORDINARY LEVEL**

This certifies that the candidate named below sat the Singapore-Cambridge General Certificate of Education Ordinary Level Examination conducted by the Ministry of Education, Singapore, the University of Cambridge International Examinations and the Singapore Examinations and Assessment Board and obtained the following results:

YEAR OF EXAM: \_\_\_\_\_

CANDIDATE: \_\_\_\_\_

NRIC/FOREIGN IDENTIFICATION NO: \_\_\_\_\_

SCHOOL: \_\_\_\_\_

INDEX NO: \_\_\_\_\_

SUBJECT	GRADE Alphabetical	GRADE Numerical	LANGUAGE MEDIUM	EXAMINING AUTHORITY
ENGLISH LANGUAGE	B	THREE	ENGLISH	CAMBRIDGE
COMBINED HUMANITIES	B	THREE	ENGLISH	CAMBRIDGE
GEOGRAPHY	B	FOUR	ENGLISH	CAMBRIDGE
MATHEMATICS	D	SEVEN	ENGLISH	CAMBRIDGE
SCIENCE/CHEMISTRY, BIOLOGY	C	SIX	ENGLISH	CAMBRIDGE
PRINCIPLES OF ACCOUNTS	B	THREE	ENGLISH	CAMBRIDGE
CHINESE	C	FIVE	CHINESE	SINGAPORE
CHINESE (ORAL/AURAL)	-	PASS	CHINESE	SINGAPORE

Number of Ordinary Level Subjects Recorded: SEVEN Number of Subjects graded 4 or better: SIX

Director-General of Education Singapore Vice-Chancellor University of Cambridge 428753 /2017 (see overleaf)

Results Cert

Form N

**Ministry of Technical Education  
Singapore**

**FORM N**

RA/1

NRIC/FOREIGN IDENTITY NO: 90490131A

SCHOOL CODE AND INDEX NO: N007024/1213 0001

Paya Lebar Methodist Girls' School (Secondary)

# FORM N

## 2018 JOINT INTAKE EXERCISE (GCE 'N' LEVEL) FOR ITE COURSES

FORM N

Based on your 2017 GCE 'N' Level Examination results, you are eligible to apply for the ITE Full-time and Traineeship courses listed below:

### Joint Intake Exercise 'H' Full-time Higher Nitec Courses under Direct-Entry-Scheme to Polytechnic Programme (DPP)

Course	College	Course	College	Course	College	Course	College
FPACC	CC-AM	FPCSE	CC-AM	FPIAD	CE-SM	FPMEC	CC-AM
FPACC	CE-SM	FPECE	CC-AM	FPIAD	CW-CK	FPMEC	CE-SM
FPACC	CW-CK	FPECE	CE-SM	FPISN	CC-AM	FPMEC	CW-CK
FPBIS	CE-SM	FPECE	CW-CK	FPISN	CE-SM	FPNST	CE-SM
FPBNS	CC-AM	FPELE	CE-SM	FPISN	CW-CK	FPNST	CW-CK
FPBSC	CW-CK	FPELE	CW-CK	FPLIT	CE-SM		
FPBSE	CC-AM	FPGAD	CC-AM	FPLTO	CW-CK		
FPBSE	CE-SM	FPHPO	CW-CK	FPMCE	CC-AM		
FPCHT	CE-SM	FPIAD	CC-AM	FPMCE	CW-CK		

### Joint Intake Exercise 'N' Full-time 2-Year Nitec Courses

Course	College	Course	College	Course	College	Course	College	Course	College
NFAAZ*	CC-AM	NFDVZ	CW-CK	NFFTM	CE-SM	NFNSZ*	CE-SM	NFWEB	CE-SM
NFACZ*	CW-CK	NFECZ	CC-AM	NFFTM	CW-CK	NFOPZ	CE-SM	NFWEB	CW-CK
NFAFZ	CE-SM	NFECZ	CE-SM	NFFTV	CE-SM	NFPBZ*	CW-CK		
NFAMZ	CC-AM	NFECZ	CW-CK	NFFTZ*	CC-AM	NFPID*	CC-AM		
NFATH	CW-CK	NFELL	CE-SM	NFFTZ*	CE-SM	NFRSZ	CC-AM		
NFATL	CW-CK	NFELL	CW-CK	NFFTZ*	CW-CK	NFRSZ	CW-CK		
NFATZ*	CC-AM	NFELP	CE-SM	NFHFD*	CE-SM	NFRTZ	CW-CK		
NFBSZ	CC-AM	NFELP	CW-CK	NFICT	CC-AM	NFSDA*	CC-AM		
NFBSZ	CE-SM	NFFAZ*	CC-AM	NFICT	CE-SM	NFSDI*	CC-AM		
NFBSZ	CW-CK	NFFBZ	CW-CK	NFICT	CW-CK	NFSTZ	CW-CK		
NFBWZ*	CE-SM	NFFLZ	CC-AM	NFLSZ	CE-SM	NFTTZ*	CW-CK		
NFCPZ	CE-SM	NFFSZ	CC-AM	NFMCZ	CC-AM	NFUEZ	CC-AM		
NFCSZ*	CE-SM	NFFSZ	CE-SM	NFMCZ	CW-CK	NFVCZ*	CC-AM		
NFDAN*	CC-AM	NFFSZ	CW-CK	NFMTZ	CC-AM	NFVEZ*	CC-AM		
NFDPE	CC-AM	NFFTA	CE-SM	NFMTZ	CE-SM	NFWCZ*	CW-CK		
NFDVZ	CE-SM	NFFTL	CE-SM	NFMTZ	CW-CK	NFWEB	CC-AM		

Refer to booklet pg 8 – 15 for course codes

Course Code  
FPECE =  
(Electronics Engineering)

College Code  
CC-AM

ITE Institute of Technical Education  
2018 JOINT INTAKE EXERCISE (GCE 'N' LEVEL) FOR ITE COURSES

FORM N

NRIC/FOREIGN IDENTITY NO.  
T0490121A

SCHOOL CODE AND INDEX NO.  
MOB7026/1211 0001

Page: 1

Peri: Lohar Methodid Girls' BE 95



# FORM N

## Traineeship Intake

<u>Course</u>	<u>Course</u>	<u>Course</u>	<u>Course</u>	<u>Course</u>	<u>Course</u>	<u>Course</u>	<u>Course</u>
NAACZ	NABSZ	NAFTM	NAICT	NARSZ	T2DET	T2PIF	TSDEA
NAATH	NABWZ	NAHFD	NAMCZ	NASYT	T2MEL	T2STF	
NAATL	NAFBZ	NAICN	NAPBZ	NAWCZ	T2MRM	T2WDG	

You can also choose to enrol in a Traineeship course which will enable you to get the job you want, earn an income, and be awarded with the ITE Course Certificate and Traineeship Certificate! To apply, please go to [www.ite.edu.sg](http://www.ite.edu.sg) and click on the hotspot to link you to the application website.

**If you are interested in the traineeship programme, please refer to pg 121 – 131**

ITE Institute of Technical Education

**FORM N**

ANG ZU EN GRACE  
BLK 481 YIO CHU KANG ROAD  
SINGAPORE 787056

NRIC-FOREIGN IDENTITY NO:  
T0490122A

SCHOOL CODE AND INDEX NO:  
N087026/1211 0001

Page Leave Methodist Girls' SE (75)



ALL INFORMATION IS IN  
THE ADMISSION BOOKLET

**2022**

INTAKE EXERCISE

*For January 2022 Intake*

**Admission Booklet**

For Full-Time and  
Traineeship Courses



**Institute of Technical Education**

Internet Address: [www.ite.edu.sg](http://www.ite.edu.sg)

# PRESENTATION SLIDES WILL BE UPLOADED ON THE SCHOOL WEBPAGE AFTER TODAY

## Release of 2021 GCE 'N' Level Examination Results

Please [click here](#) for more information.



PAYA LEBAR METHODIST GIRLS' SCHOOL (SECONDARY)

巴耶礼峇美以美学校 (中学)



Announcements

### Release of 2021 GCE 'N' Level Examination Results

Please [click here](#) for more information.

### Theme for 2022: Enriched To Face Life's Greatest Call

Please [click here](#) for more information.

### PLMGS(Sec) Booklist for 2022

Please [click here](#) for more information.

News & Events

*Respect*

*To respect self, others and is respected by others*



# TAKE NOTE

Check that your personal particulars  
(such as statutory names and Hanyu  
Pinyin names) are printed

**CORRECTLY**

on your results slips





ask

## APPEAL FOR REVIEW OF RESULTS

- Please see [Mr Lee Wei Te](#) or go to the office for the relevant forms
  - Outcome of the Individual Appeal is expected to be released to schools by **Wed, 26 Jan 2022**
  - Submission to office by Monday **21 Dec 3 pm**
  - Cost is **\$112.35** per subject

Proceed only if you have very **STRONG** grounds for appeal



## **AVAILABILITY OF PCS IN SCHOOL WITH INTERNET ACCESS & PRINTERS FOR JOINT INTAKE EXERCISE (JIE) REGISTRATION**

**Venue:** General Office

**Attire:** School Uniform

**Dates:** **17<sup>th</sup> Dec (3pm to 4.30pm)**

**20<sup>th</sup> & 21<sup>st</sup> Dec 2021 (9am to 4pm)**

# NEXT STEP AFTER N-LEVELS

## Tertiary Education

1. Enhanced Nitec
2. Nitec / 3 Year Higher Nitec
3. Higher Nitec (DPP) – For 4NA only
4. Traineeship Prog
5. NFP – For 4NA only



## Diploma Polytechnic Foundation Programme

SINGAPORE  
POLYTECHNIC | **SP**

 **REPUBLIC  
POLYTECHNIC**

 **NGEE ANN  
POLYTECHNIC**

 **NANYANG**  
THE INNOVATIVE POLYTECHNIC

 **Temasek**  
POLYTECHNIC

## Secondary Education

1. Secondary 5 (O-levels) for 4NA
2. Lateral Transfer to 4NA from 4NT



- Appeal-based
- Subject to MOE criteria and approval

## PROGRESSION PATHWAYS FOR 4N (ACADEMIC)

No	Item	Eligibility Criteria	Remarks
1	Polytechnic Foundation Programme (PFP)	ELMAB3 $\leq$ 12 (Excl CCA pts) + course entry requirement	Apply when O-levels results are released in mid Jan 2022
2	Direct-Entry-Scheme to Poly Prog (DPP) – Higher NITEC	ELMAB3 $\leq$ 19 (Excl CCA pts) + course entry requirement	Application from 2.30 pm (Today) – 21 Dec 2021 (Tues), 5 pm
3	Progression to ITE for NITEC / 3 Year Higher Nitec courses	Prerequisites & bonus pts stated in booklet	Application from 2.30pm (Today) – 21 Dec 2021 (Tues), 5 pm
4	Retain in 4NA	ELMAB3 $\leq$ 21 or ELB3 $\leq$ 14 or MAB3 $\leq$ 14 or Other prerequisites	Depends on Vacancy & students need to submit a formal appeal to school

## PROGRESSION PATHWAYS FOR 4N (ACADEMIC)

No	Item	Eligibility Criteria	Remarks
5	<b>Sec 5NA</b>	<b>ELMAB3 <math>\leq</math> 19</b> (Excl CCA pts) and at least a grade 5 for all subj used in the computation of ELMAB3	
6	<b>NAFA Foundation Programme (NFP)</b>	<b>ELMAB3 <math>\leq</math> 15</b> (Excl CCA pts)  Applicants who score 4 and above in English Language will be required to attend an interview.	<b>Application from 15 Dec 2021 – 31 Dec 2021</b>  Please apply <b>DIRECTLY</b> on NAFA Website

## PROGRESSION PATHWAYS FOR 4N (TECHNICAL)

No	Item	Criteria	Remarks
1	Progression to ITE for NITEC & 3 Year Higher Nitec courses	Prerequisites & bonus pts stated in the booklet	Application from <b>2.30 pm (Today) – 21 Dec 2021 (Tues), 5 pm</b>
2	Enhanced Nitec Foundation Programme (eNFP) 1+2 =3yrs in ITE	0 or 1 N-level pass only	Application from <b>2.30 pm (Today) – 21 Dec 2021 (Tues), 5 pm</b>
3	<b>Transfer to 4NA</b>	<ul style="list-style-type: none"> <li>Grade A for <b>both</b> EL &amp; MA and</li> <li>Grade B or better for 1 other sub</li> </ul>	Subject to approval from MOE

# Key Dates for Jan 2022 Intake Exercise (Full-time *Nitec* Courses)

Key Activity	Period for 2-Year and 3-Year <i>Nitec</i> Courses, and 3-Year <i>Higher Nitec</i> courses	Remarks
<b>1st Phase (Main Phase)</b>		
Application	17 Dec 2021 (2.30pm) to 21 Dec 2021 (5pm)	Apply through the Internet at <a href="https://www.ite.edu.sg">https://www.ite.edu.sg</a> with NRIC / FIN and Date of Birth. You may also apply using SingPass.
Release of Results	30 Dec 2021 at 9am	Check results at <a href="https://istudent.ite.edu.sg">https://istudent.ite.edu.sg</a> with web ID and password
Acceptance of Course Offer Period	30 Dec 2021 to 4 Jan 2022	Accept course offer at <a href="https://istudent.ite.edu.sg">https://istudent.ite.edu.sg</a> with web ID and password
<b>2nd Phase (Late Application/Appeal Phase)</b>		
Application	30 Dec 2021 to 4 Jan 2022	Apply through the Internet at <a href="https://istudent.ite.edu.sg">https://istudent.ite.edu.sg</a> with NRIC / FIN and Date of Birth. You may also apply using SingPass.
Release of Results	11 Jan 2022 at 9am	Check results at <a href="https://istudent.ite.edu.sg">https://istudent.ite.edu.sg</a> with web ID and password
Acceptance of Course Offer Period	11 Jan 2022 to 13 Jan 2022	Accept course offer at <a href="https://istudent.ite.edu.sg">https://istudent.ite.edu.sg</a> with web ID and password
<b>3rd Phase (Final Top-up Phase)</b>		
Application	1 <sup>st</sup> Top-up Phase Application - 11 Jan to 20 Jan 2022 2 <sup>nd</sup> Top-up Phase Application - 26 Jan to 8 Feb 2022	Apply through the Internet at <a href="https://istudent.ite.edu.sg">https://istudent.ite.edu.sg</a> with NRIC / FIN and Date of Birth. You may also apply using SingPass.
Release of Results	1 <sup>st</sup> Top-up Phase - 14 Jan to 26 Jan 2022 2 <sup>nd</sup> Top-up Phase - 26 Jan to 15 Feb 2022	Check results at <a href="https://istudent.ite.edu.sg">https://istudent.ite.edu.sg</a> with web ID and password
Acceptance of Course Offer Period	1 <sup>st</sup> Top-up Phase - 14 Jan to 26 Jan 2022 2 <sup>nd</sup> Top-up Phase - 26 Jan to 15 Feb 2022	Accept course offer at <a href="https://istudent.ite.edu.sg">https://istudent.ite.edu.sg</a> with web ID and password
Jan 2022 Intake Term Commencement Date: <b>10 Jan 2022</b>		



# Key Pointers for Students on ITE's Joint Intake Exercise (JIE) for Admission to *Nitec* Courses

**Secondary**



**8 things you should know**



**ITE**

All N(T) students and N(A) students (who are not progressing to 5N(A) or repeating 4N(A)) are eligible for JIE.

Keen competition for *Nitec* courses, so use all 12 choices!

Participation in Main Phase is key to secure a place in ITE!

If you are applying for Traineeship, make sure you apply in Main Phase to avoid missing a place!

If you are unsuccessful in EAE, make sure you apply in Main Phase to avoid missing a place!

If you have received an additional letter, then you are eligible for the 3-year *Nitec* Programme (eNFP).

If you are eligible for eNFP, make sure you apply for the 2-year *Nitec* first before applying for eNFP!

Additional eNFP year helps to improve literacy and numeracy skills!





**IF YOU'VE ALREADY ACCEPTED YOUR EAE  
OFFER, YOU WILL NOT BE ELIGIBLE FOR JIE.**

**RESULTS MUST MEET THE MINIMUM ENTRY  
REQUIREMENTS OF THE COURSE.**



# FOR ALL 4 NA STUDENTS:

Timeframe	Action to be taken
<b>Submit by 21 Dec 2021 - 12noon</b>	Complete <a href="#">Letter of Undertaking</a> and submit form to indicate continue Sec 5 NA 2021 to General Office on <a href="#">4 Jan 2022</a> , even if you are applying for PFP

**ALL students MUST submit the Letter of Undertaking to the General Office.**

# ITE SCHOLARSHIPS, AWARDS & BURSARIES



Institute of Technical Education

Who We Are ▾

Colleges ▾

Courses ▾

Admissions ▾

Life@ITE ▾

Employers ▾

Newsroom ▾



## Scholarships, Awards & Bursaries

Scholarships



Ask Jamie @ ITE

[Home](#) > [Admissions](#) > [Scholarships, Awards & Bursaries](#) > [Scholarships](#)

Certification System

Assessments ▾

Academic Calendar

Full-time Courses ▾

### SCHOLARSHIPS

At ITE, we have a wide-range of scholarships and sponsorship awards offered by external organisations and companies for our students. Deserving students will be awarded the scholarships or sponsorships based on academic merit, good track records in co-curricular activities, leadership qualities and special talents. Students should apply for these scholarships and sponsorships at the respective ITE Colleges upon admission to the course (if applicable). The list of scholarships and sponsorships offered for ITE full-time courses are given below.



# PFP Study Award / Scholarships

	Application	Eligibility
TP	By invitation after N Levels	Outstanding EMB3 at the GCE N-Level Exams & Excellent CCA records Good character and conduct
NYP		ELMAB3 of $\leq 7$ points & Excellent CCA records
NP		Good N Level Results & Leadership Qualities
SP		Outstanding ELMAB3 & Excellent CCA records
RP	Before N Levels	Prelim Results ELMAB3 $\leq 10$ & Excellent CCA Grade Get a <b>conditional offer</b> before N Levels

# INTEGRATED NURSING & COMMUNITY NURSING SCHOLARSHIP

---

7 January 2022 3pm to 5pm



Please sign up via this link:

<https://www.eventbrite.sg/e/integrated-nursing-and-community-nursing-scholarship-information-session-registration-195745047707?aff=edmschool>

# NAFA — WEBINARS 20TH DEC

ENROL HERE - [HTTPS://ENROL.NAFA.EDU.SG/NFP](https://enrol.nafa.edu.sg/nfp)



## Course Presentation: NAFA Foundation Programme

📅 20 December  
🕒 10:00 am - 11:00 am



## Course Presentation: Dance

📅 20 December  
🕒 2:00 pm - 3:00 pm



## Course Presentation: Theatre

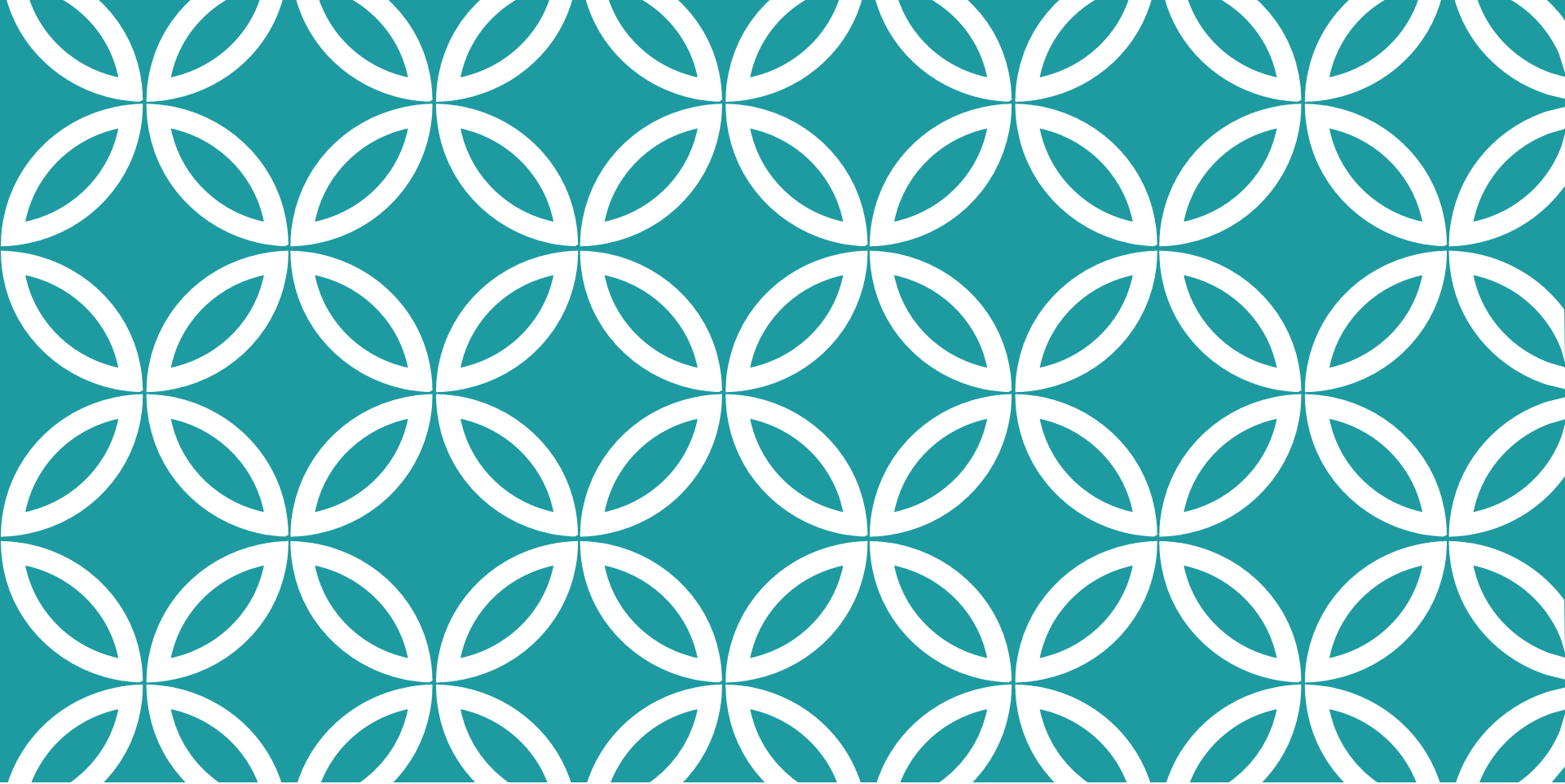
📅 20 December  
🕒 3:00 pm - 4:00 pm



## Course Presentation: School of Art & Design

📅 20 December  
🕒 4:00 pm - 6:00 pm





**FOR STUDENTS  
CONSIDERING  
PRIVATE EDUCATION**







# PRIVATE EDUCATION

The Council for Private Education (CPE) is a statutory board established in December 2009 under the MOE, to regulate private education institutions (PEIs) in Singapore.

Council for  
Private Education  

---

SINGAPORE



<https://www.ssg.gov.sg/cpe/student-services/student-resources.html>



# The 3Rs when deciding on Private Education

**Reasons**

Why are you  
furthering your  
studies?

**Readiness**

How ready are you  
to further your  
studies?

**Risks**

Do you know the  
possible  
drawbacks?

# 8 Things You Should Know Before You Enroll in A Private School

## School Registration



Ensure the school is registered with CPE. Review the school's registration period, expiry date and its overall registration track record.

## Partner Institution



Research on the partner institution conferring the diploma or degree, and whether the qualification is recognised by the industry.

## EduTrust Certification Scheme

Is the school EduTrust-certified\*? Under the scheme, private schools are assessed for their performance in areas such as school management and provision of student support services.



*\*Schools are required to obtain EduTrust certification in order to offer external degree programmes*

## School Premises

Head down to the campus ground to check the facilities and support services. Observe the study environment too.



## Fee Protection



Ask if there is any course fee protection so that you will be able to recover unconsumed course fees should the school close down.

## Beyond Course fees



Find out about the course syllabus and materials, graduation rates and employment prospects. Approach the alumni to find out what they think of the school.

## Teachers

Check if the teachers are qualified to teach the course.



## Internship

If industry attachment is included, find out which organisation you will be attached to, the period of attachment and the alternative arrangement should the attachment become unavailable. Verify the information with the organisation as well.

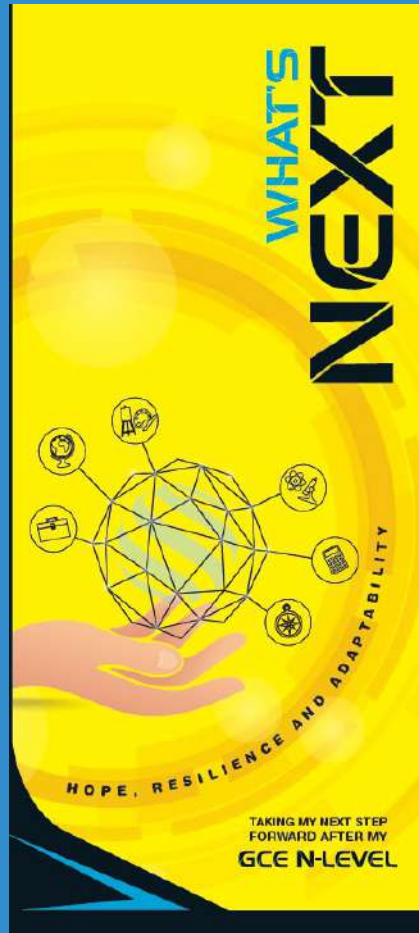


# MySkillsFuture Student Portal (Secondary)

Visit <https://go.gov.sg/MySFSec> for more information on post-GCE N-Level options



# What's Next – A Quick Guide



<https://go.gov.sg/whats-next-nlevel>






# On My Way (OMW)




You can find articles, videos on different professions, and connect with tertiary seniors and young professionals through sharing sessions with National Youth Council's On My Way (OMW) website.

**KNOW IT ALL**



**INVESTMENT BANKER**

Investment Bankers sell securities and provide strategic advice to their clients. They advise clients on raising funds from the equity/debt capital markets and merger and acquisitions (M&A).



**RESPONSIBILITIES**


Advise corporate clients on product offerings, private equity transactions, mergers and acquisitions, and valuations.

Determine the **best strategy** and place to **raise debt or equity capital**.

Prepare necessary documents to **protect the company and investor**.

Ensure all **government regulations** have been adhered to.


Perform financial modelling using valuation methods.



**SKILLS NEEDED**

**HARD SKILLS**

- Financial Modelling (e.g. DCF, Public Comp, M&A Comp)
- Data Analytics
- Strong Mathematical and Numerical Skills



**SOFT SKILLS**


- Influencing and negotiation skills
- Innovative Problem Solving
- Customer Orientation
- Communication

**DAY IN THE LIFE**

Explore our library of over 60 videos to get an intimate look into the daily lives of different professionals. Looking for a specific job? Use the category filter below to help you navigate the videos!

**BROWSE ALL**


Filter By Category:



**A Day in the Life of a Civil Engineer**

Ever wondered what engineers do other than map? Join Yu Hui as she brings us into the world of a Civil Engineer!


By National Youth Council  
#Engineering #CivilEngineer



**A Day in the Life of a Game Developer**

What really goes on behind the scenes of games development? Learn more about what a Game Developer does!


By National Youth Council  
#ComputerScience #GameDeveloper



**A Day in the Life of a Public Relations Manager**

Working around the topics isn't what Samantha does all the time. Let's see what she has to highlight to go!

By National Youth Council  
#Communication #PublicRelations #PublicRelationsOfficial



**A Day in the Life of a Social Media Strategist**

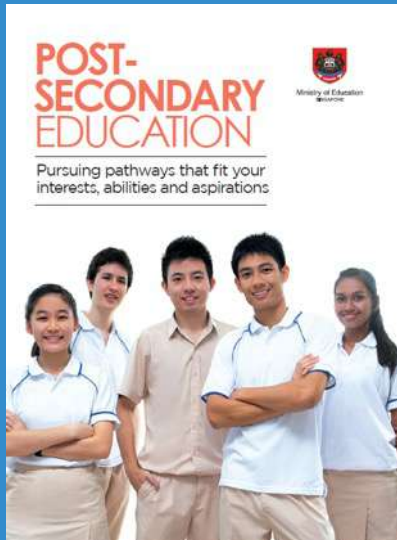
Social media all day every day? Find out what it's like to be a Social Media Strategist!

By National Youth Council  
#Communication #SocialMedia #SocialMediaStrategist



<https://go.gov.sg/omw2022>

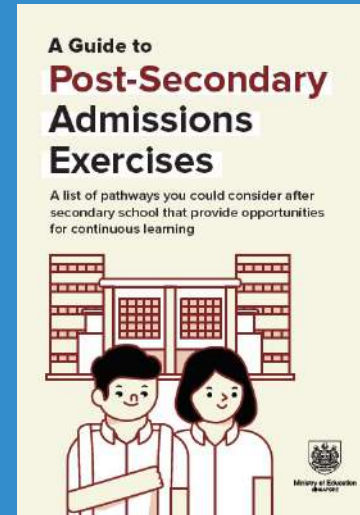
# Post- Secondary Education



## Post-Secondary Education booklet

Learn more about the post-secondary landscape at

<https://moe.gov.sg/post-secondary/overview>



## Post-Secondary Admissions Exercises booklet

A list of pathways you could consider after secondary school

<https://moe.gov.sg/post-secondary/admissions>



# Speak to an ECG Counsellor

- Making informed decisions is important for successful transition from school to further education.
- Speak with your teachers and ECG Counsellor in school, besides your parents, on the possible pathways.
- MOE ECG Centre offers online or phone counselling services to GCE N-Level students from 13 – 24 December 2021 (Weekdays: 9.00 am to 5.00 pm; 18 December, Saturday & 24 December, Friday: 9.00 am to 12.30 pm).
- Details on how to make an appointment can be found in the What's Next pamphlet distributed to you.

Make an online or phone counselling appointment with the ECG Centre @ MOE (Grange Road) through

<https://go.gov.sg/moe-ecg-centre>.



# ECG SUPPORT AT PLMGSS

## Virtual Consultation with Ms. Ginn, Senior ECG Counsellor

Ms Ginn is available for consultation via Zoom on 18th Dec (Sat) 9am to 1230pm, 20th Dec (Mon) & 21st Dec (Tues) 9am to 5pm.

Email : [tiang\\_ginn\\_wah@schools.gov.sg](mailto:tiang_ginn_wah@schools.gov.sg)

Book an Appointment: <https://go.gov.sg/plmgss-ecg>



## Support by School

**Ms Das Ruth Hannah, SH ECG**

Email : [das\\_ruth\\_hannah@moe.edu.sg](mailto:das_ruth_hannah@moe.edu.sg)

## Online or Phone Counselling by ECG Centre

13 – 24 Dec (Weekdays: 9am to 5pm), 18 Dec (Sat) & 24 Dec (Fri) 9am to 1230 pm).

Contact : 6831 1420, Email: [MOE\\_ECG@moe.gov.sg](mailto:MOE_ECG@moe.gov.sg)

Book an Appointment : <https://go.gov.sg/moe-ecg-centre>

## 'N' Levels Support by ITE

ITE College Central | Tel: 1800 222 2111 | [college\\_central@ite.edu.sg](mailto:college_central@ite.edu.sg)

ITE College East | Tel: 6590 2262 | [college\\_east@ite.edu.sg](mailto:college_east@ite.edu.sg)

ITE College West | Tel: 6590 2628 | [college\\_west@ite.edu.sg](mailto:college_west@ite.edu.sg)

## Before the Session

- Do your course exploration and shortlisting
- Jot down any questions you might have
- Find out your CCA grade

## Please have this ready during the session

- 2022 JIE Booklet
- Result Slip & Form N
- Prelim Result Slip if you are taking O Level Subject(s)





**RELEASE OF  
2021 GCE N-LEVEL  
EXAMINATIONS RESULTS**