



**Paya Lebar**  
**Methodist Girls' School (Secondary)**  
**巴耶礼峇美以美女校 (中学)**

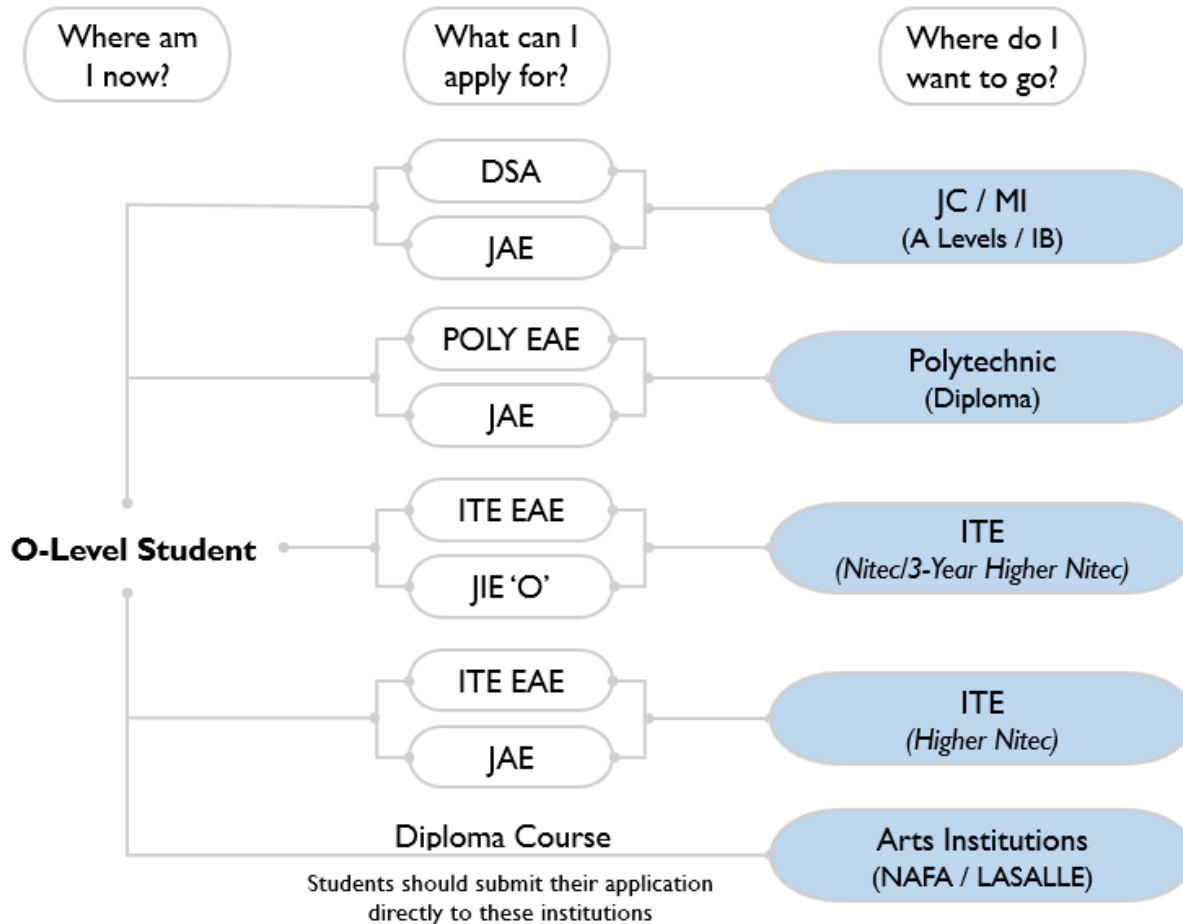
# **Education and Career Guidance (ECG) Secondary 3 and 4**

## **Express Post-Secondary Options**

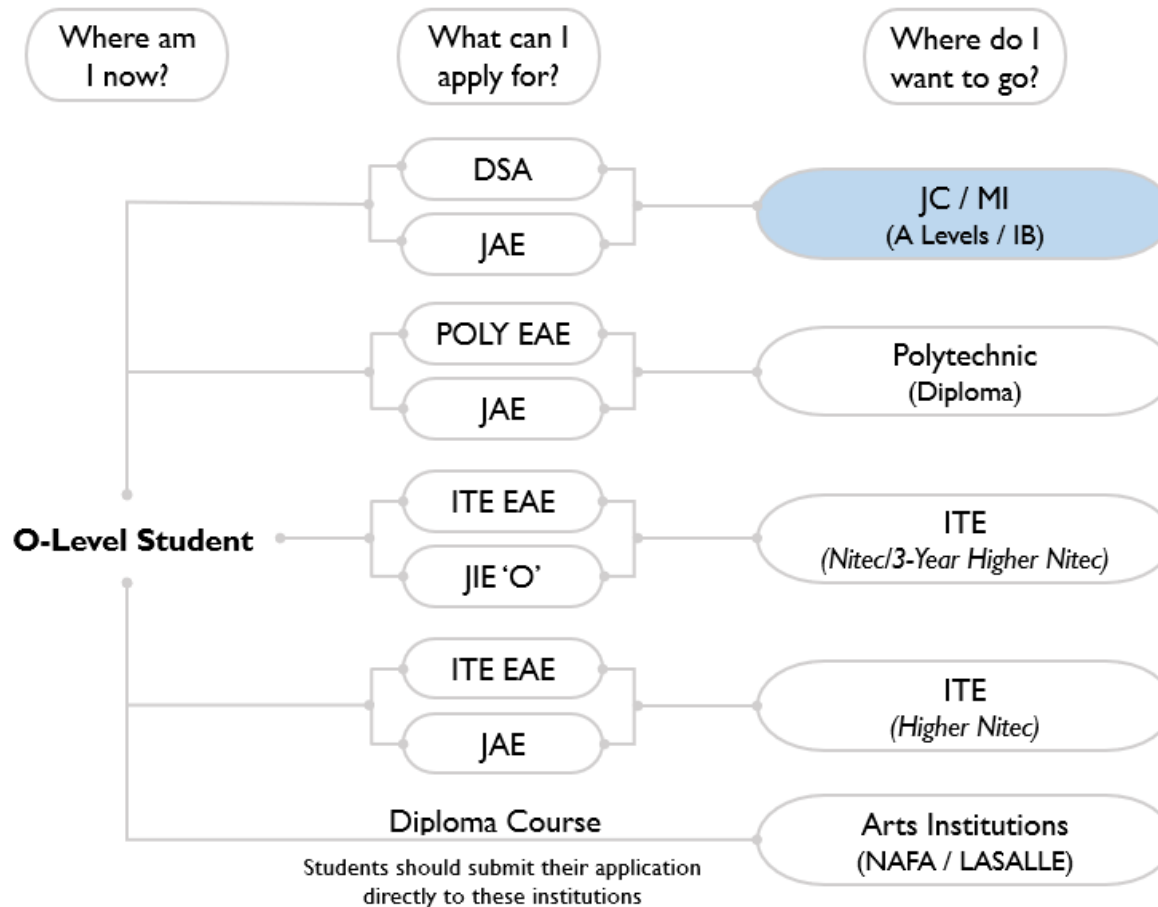
7 Jan 2022



# What's next after 'O' Levels?



# Pre Universities (JC / MI)





# JC and MI: Admission Criteria

L1R5 : For Junior College Course		
L1	First Language	- English/Higher Mother Tongue
R5	Relevant Subject 1	- Humanities/Higher Art/Higher Music/Malay (Special Programme)/ Chinese (Special Programme)/Bahasa Indonesia
	Relevant Subject 2	- Mathematics/Science
	Relevant Subject 3	- Humanities/Higher Art/Higher Music/Mathematics/ Science/ Malay (Special Programme)/Chinese (Special Programme)/ Bahasa Indonesia
	Relevant Subject 4	- Any GCE 'O' Level subjects (except Religious Knowledge)
	Relevant Subject 5	- Any GCE 'O' Level subjects (except Religious Knowledge)

JC  
 $L1R5 \leq 20$

L1R4 : For Millennia Institute Course		
L1	First Language	- English/Higher Mother Tongue
R4	Relevant Subject 1	- Humanities/Higher Art/Higher Music/Mathematics/ Science/ Malay (Special Programme)/Chinese (Special Programme)/ Bahasa Indonesia
	Relevant Subject 2	- Humanities/Higher Art/Higher Music/Mathematics/ Science/ Malay (Special Programme)/Chinese (Special Programme)/ Bahasa Indonesia
	Relevant Subject 3	- Any GCE 'O' Level subjects (except Religious Knowledge)
	Relevant Subject 4	- Any GCE 'O' Level subjects (except Religious Knowledge)

MI  
 $L1R4 \leq 20$



# JC and MI: Subject Requirements

Table 10  
Subject Requirements

Subject	Requirement
English Language	A1 to C6
Mother Tongue Language * :	
Chinese Language, Malay Language, Tamil Language	A1 to D7
<u>OR</u> Higher Chinese Language, Higher Malay Language, Higher Tamil Language	A1 to E8
<u>OR</u> Chinese Language 'B' Syllabus, Malay Language 'B' Syllabus, Tamil Language 'B' Syllabus	Merit or Pass
Mathematics:	
Mathematics	A1 to D7
<u>OR</u> Additional Mathematics	A1 to D7





# Bonus Points

	Type of Bonus Points	Number of Bonus Points	Maximum Bonus Points Allowable	
1	CCA Grade: Excellent Good	2 points 1 point	Maximum of 4 Bonus Points	Maximum of 6 Bonus Points
2	Affiliation with ACJC if they choose ACJC as 1 <sup>st</sup> choice or 1 <sup>st</sup> and 2 <sup>nd</sup> choice	2 points		
3	Higher Mother Tongue	2 points		
4	MSP / CSP*	2 points		
5	CLEP / MLEP / TLEP^ & selected for the programme	2 points		

\*MSP, CSP – Malay/Chinese (Special Programme)

^CLEP / MLEP / TLEP – Chinese / Malay / Tamil Language Elective Programme





# JC and MI:

## 3 Different Levels of Study

H1	H2	H3
Half of H2 subjects in terms of content load but pitched at the same academic standard as H2 subjects	Equivalent to 'A' level subjects prior to 2006.	Subjects with diverse learning opportunities for in-depth study (e.g. advanced content, research, university-level module). You must offer the corresponding subject at H2 level.



# JC and MI: Typical Subject Combination

## **CONTENT-BASED SUBJECTS**

At least one subject is from a  
contrasting discipline

3H2 + 1H1

+

General Paper (GP)  
Project Work (PW)  
Mother Tongue (MT)

3 Compulsory  
H1 Subjects





# JC and MI: Subject Combination

- ‘A’ Level exam subject combinations VARY among individual schools.
- Each school has their own subject combinations – please check their website.
- It is important to read up on the ‘O’ Level subject pre-requisites and the various ‘A’ level subject combination options available before making your school choice.



# International Baccalaureate Diploma Programme (IBDP)



## IB STRUCTURE

### 3 CORE



**CREATIVITY, ACTION,  
SERVICE**



**THEORY OF  
KNOWLEDGE**



**EXTENDED  
ESSAY**

### 6 GROUPS

#### MATHEMATICS

MATHEMATICS /  
MATHEMATICAL STUDIES



#### SCIENCES

BIOLOGY /  
CHEMISTRY /  
PHYSICS



#### INDIVIDUALS & SOCIETIES

BUSINESS &  
MANAGEMENT /  
ECONOMICS /  
PSYCHOLOGY



#### STUDIES IN LANGUAGE & LITERATURE

ENGLISH A1



#### THE ARTS

THEATRE



#### LANGUAGE ACQUISITION



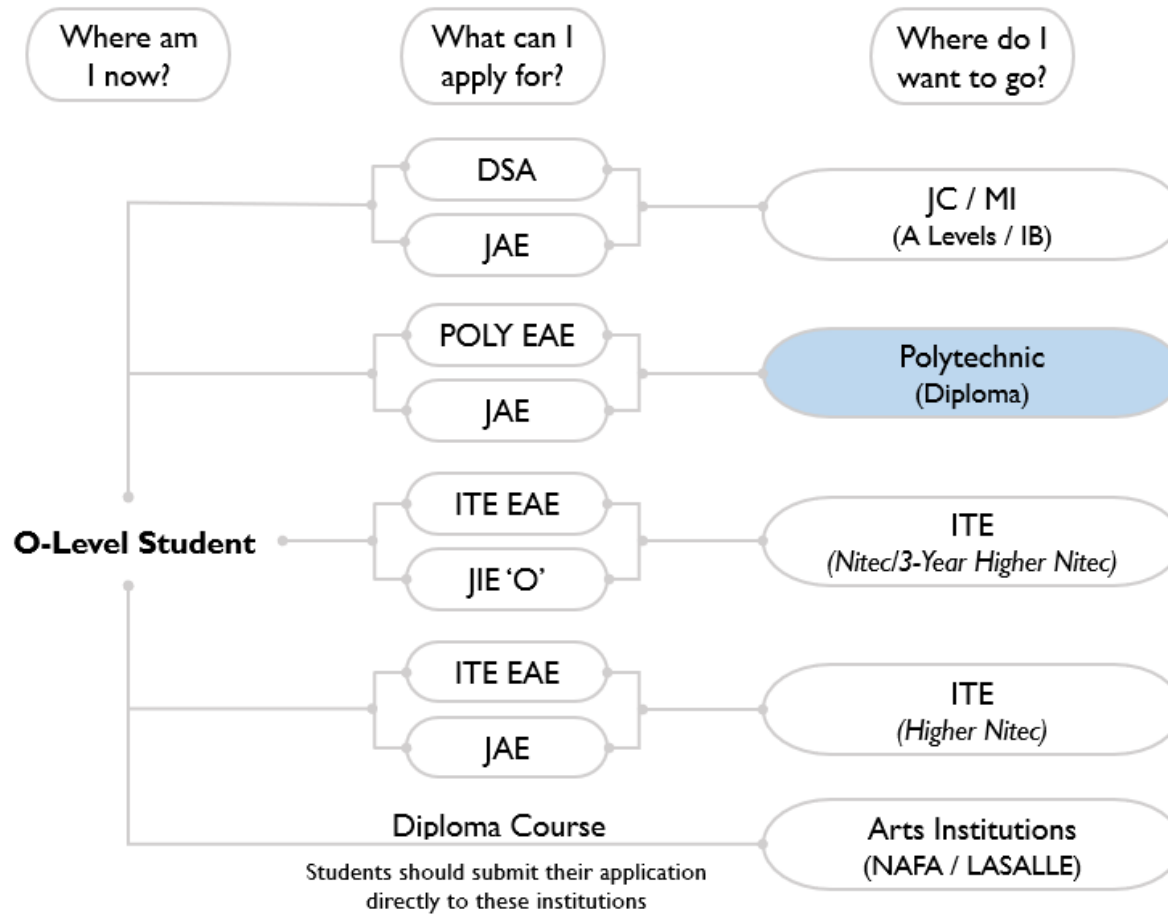
# JC and MI: 2021 Net L1R5 Aggregate

**Table D-1 : L1R5 Aggregate Scores (with Bonus Points) of  
Students Admitted to JCs in the Previous Year's (2021) JAE**

S/No	JC Name	Arts		Science/IB	
		Course Code	Previous (2021) JAE Net L1R5	Course Code	Previous (2021) JAE Net L1R5
1	Anderson Serangoon Junior College	39A	11	39S	11
2	Anglo-Chinese Junior College	22A	9	22S	8
3	Anglo-Chinese School (Independent)	-	-	51I	5
4	Catholic Junior College	23A	13	23S	13
5	Dunman High School	44A	9	44S	8
6	Eunoia Junior College	38A	8	38S	7
7	Hwa Chong Institution	24A	5	24S	4
8	Jurong Pioneer Junior College	40A	16	40S	15
9	Nanyang Junior College	26A	6	26S	6
10	National Junior College	27A	8	27S	7
11	Raffles Institution	28A	5	28S	4
12	River Valley High School	45A	9	45S	8
13	St. Andrew's Junior College	30A	11	30S	10
14	St. Joseph's Institution	-	-	52I	8
15	Tampines Meridian Junior College	41A	13	41S	13
16	Temasek Junior College	32A	9	32S	9
17	Victoria Junior College	33A	8	33S	7
18	Yishun Innova Junior College	42A	19	42S	20



# Polytechnic



# Polytechnic: Minimum Entry Requirement (MER)



Subjects	English Language	Math	Net ELR2B2
Grades	A1 to C6/D7*	A1 to C6/D7*	≤ 26

- Relevant Subjects (R2) varies from course to course.

\*Minimum Entry Requirement (MER)  
VARIES across courses.



# Overview

## A Levels

- 18 JC & 1 MI
  - 2 or 3 years
  - DSA, JAE
  - $LIR5 \leq 20$  (JC) /  $LIR4 \leq 20$  (MI)
- Subject Requirements

## Diploma

- 5 Polytechnics
  - 3 years
  - EAE, JAE
  - $ELR2B2 \leq 26$
- Minimum Entry Requirements





# Assessment System

A Levels	Diploma
External H1 MT examinable at end of Year 1 / Year 2* (MI)	Based on Modular Assessment which include <ul style="list-style-type: none"><li>• Quizzes</li><li>• Tests</li><li>• Exams</li><li>• Projects</li><li>• Activities</li><li>• In-course Assessment</li><li>• Internship</li></ul>
H2/H1 Content-based subjects at end of final year	
Internal Project Work at end of Year 1	



# Grading System



## A Levels Letter Grade System

H3: Distinction / Merit / Pass /  
Ungraded

H1 & H2
A
B
C
D
E
S
U



## Diploma Grade Point System (GPA)

Grade Point Average (GPA)  
accumulated over the 3 years

Module Grade	Grade Point
Distinction / A	4.0
B+	3.5
B	3.0
C+	2.5
C	2.0
D+	1.5
D	1
F	0



# Which is Right for my Child?



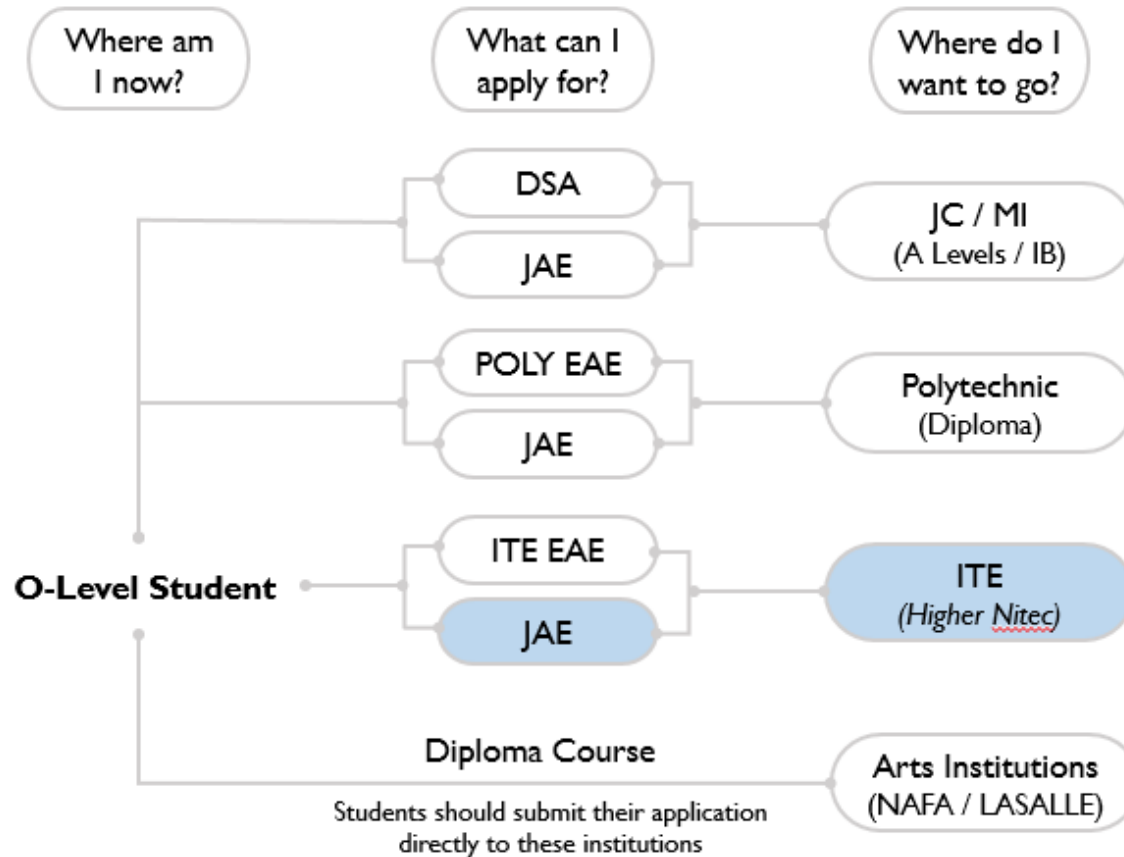
## A Levels

- Focus on self-development, critical thinking, intellectual analysis, and communications and interpersonal skills
- Curriculum:  
Math / Sciences, Humanities/ Arts and Languages
- Delve deeper into subject areas
- Single Seating of A Levels of most subjects at the final year

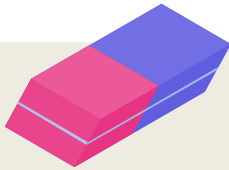
## Diploma

- Provide hands-on experience and prefer practical based learning instead of more theoretical subjects
- Curriculum:  
Applied learning and industrial attachments
- Passionate about a specific career in the future
- Modular assessment

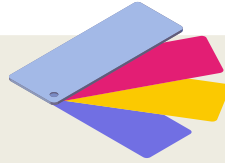
# Institute of Technical Education



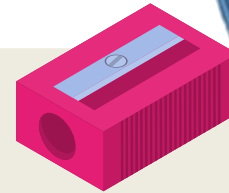
# 6 Academic Schools



School of  
Applied &  
Health Sciences



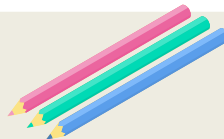
School of  
Business &  
Services



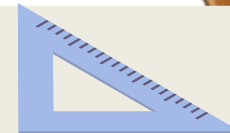
School of Design  
& Media



School of  
Electronics & Info-  
comm Technology



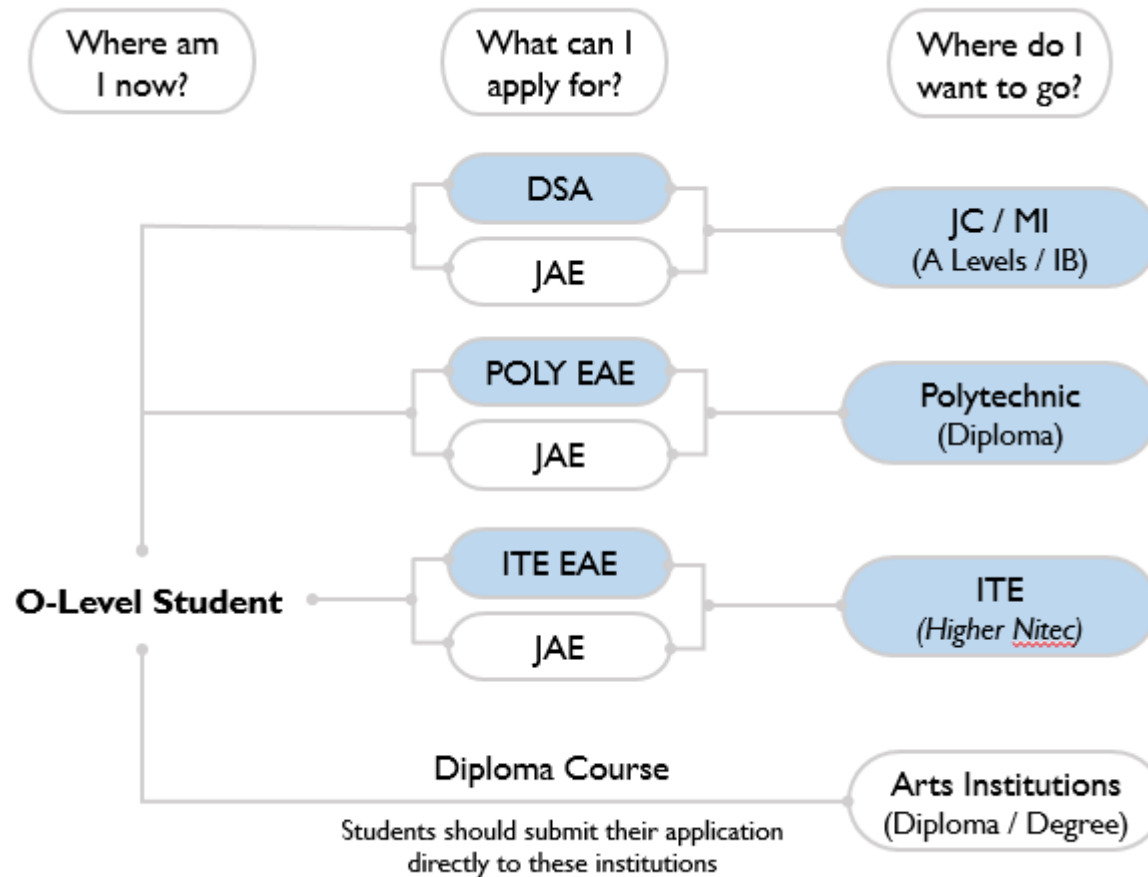
School of  
Engineering



School of  
Hospitality



# Aptitude Based Admissions DSA/EAE

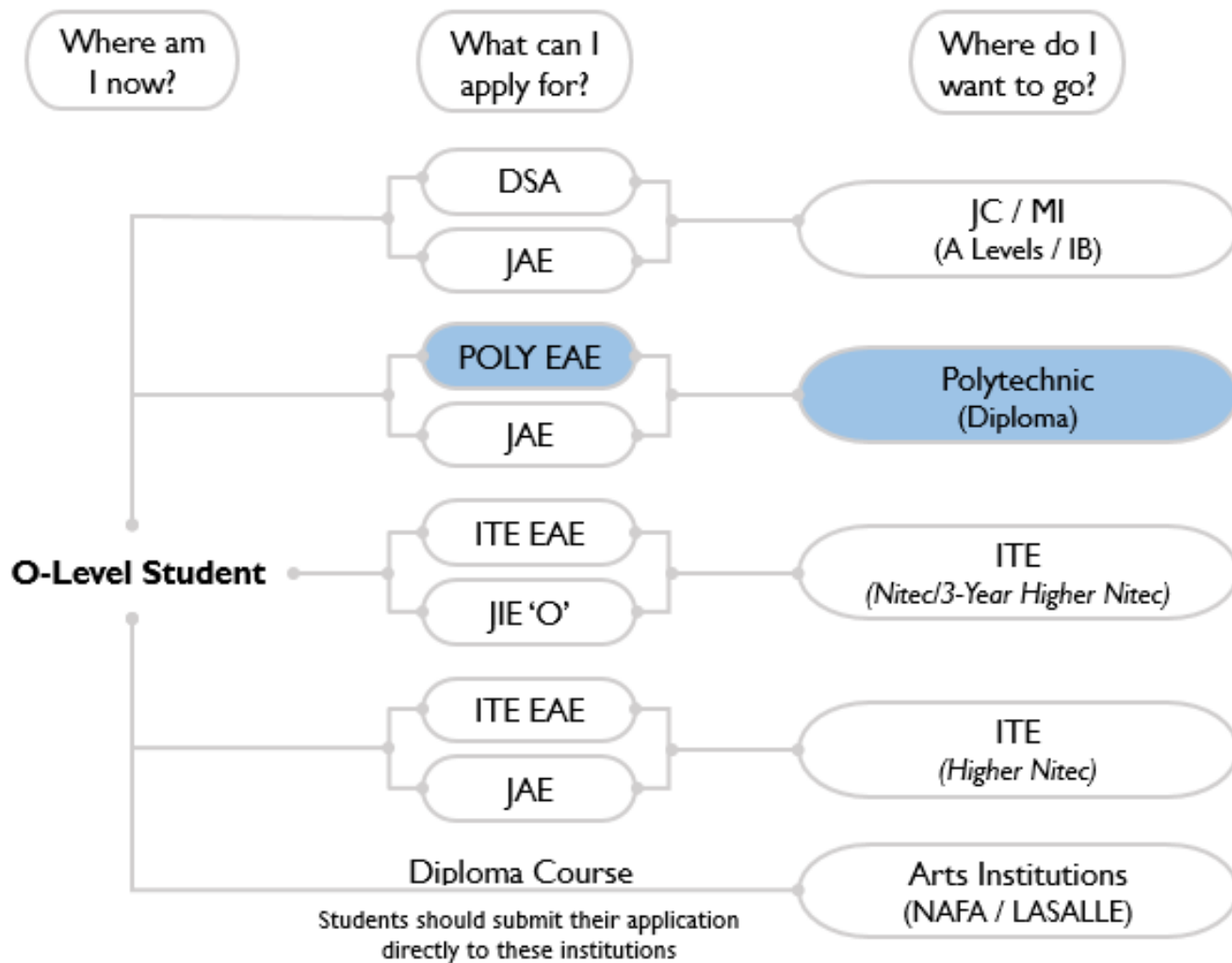




	DSA	Poly EAE
What is it?	Direct admission to JCs before receiving O level results	Early admission to Polys before receiving O level results
Requirements	<p>Based on academic and non-academic achievements and talents.</p> <p>L1R5 of 20points or better and Subject Requirements</p>	<p>An aptitude-based admissions exercise that allows students to apply &amp; receive conditional offers for admission.</p> <p>ELR2B2 of 26 points or better. Meet MER of the Poly course.</p>
Application	Starts May	Poly EAE : End June



# Post Secondary Pathways for Express Students





# Building Portfolio

- A purposeful collection of work samples from each of the learning areas that stretch over a period of time.
- It may contain work samples from each learning area, assessment tasks, photos, self-reflection and more.

School Events  
CCA Activities  
Awards  
Competitions  
FIS Experiences  
Projects  
Outside School  
activities



# Using My Skills Future

MySKILLSFuture

About ▾ Know Yourself World of Work ▾ Education Guide ▾ Help ▾ Feedback

Q Login



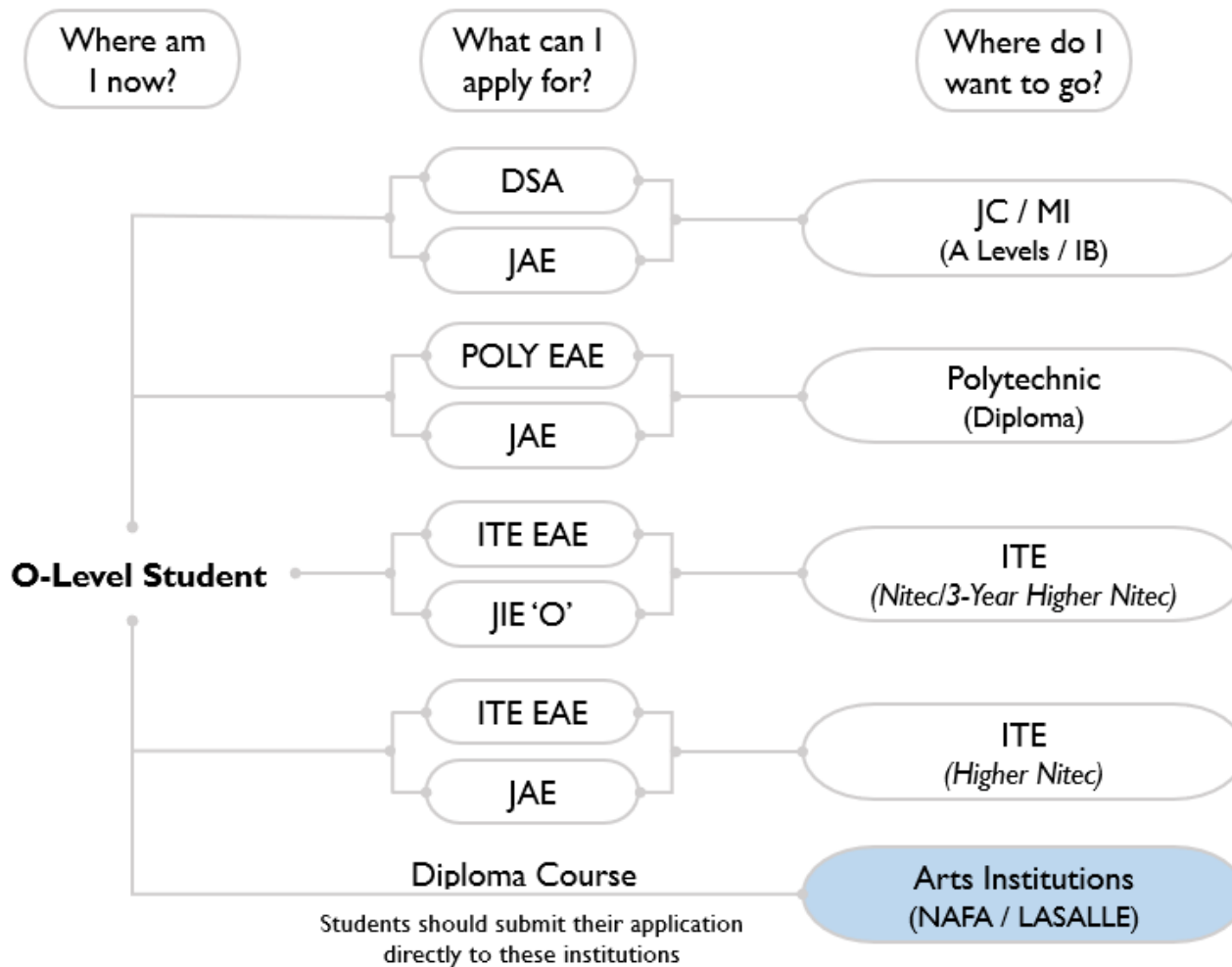
## About MySkillsFuture

A one-stop portal that empowers you to embark on a journey of self-discovery.

Log onto “Myskillsfuture” portal  
<https://go.gov.sg/mysfsec>  
using your IC number (All caps for Alphabet)



# Arts Institutions





# Academic Schools

LASALLE	NAFA
<ul style="list-style-type: none"><li>• Fine Arts</li><li>• Film and Animation</li><li>• Creative Industries</li><li>• Design Communication</li><li>• Fashion</li><li>• Spatial &amp; Product Design</li><li>• Contemporary Music</li><li>• Dance &amp; Theatre</li></ul>	<ul style="list-style-type: none"><li>• Art &amp; Design</li><li>• Arts Management, Dance &amp; Theatre</li><li>• Music</li></ul>





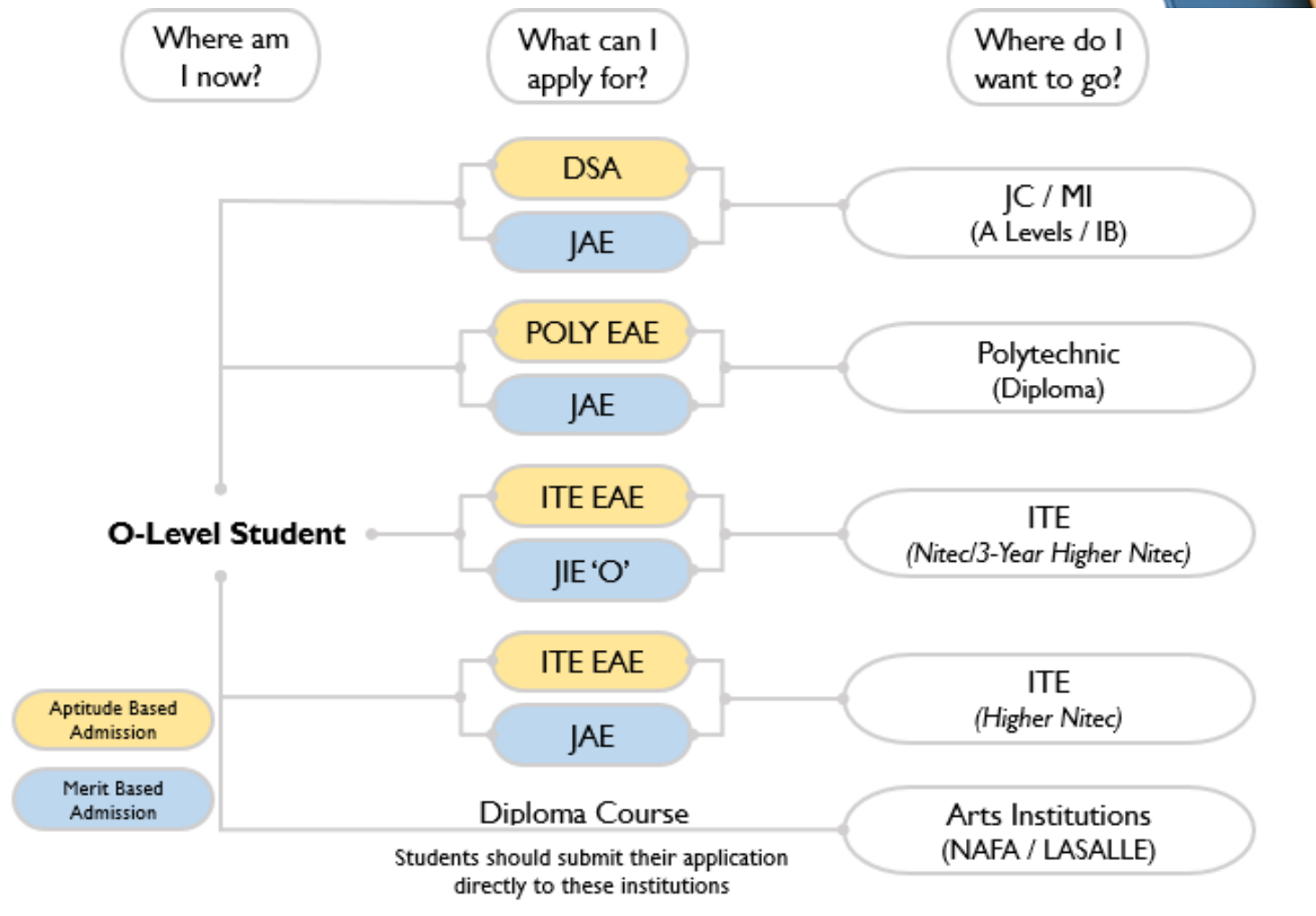


# Entry Requirements

	LASALLE	NAFA
Admission Criteria	25 points in 4 GCE 'O' Level Subjects, excluding English	
English Requirement	<ul style="list-style-type: none"><li>• C6 or Better</li><li>• Alternatives: IELTS 5.5 or TOEFL iBT 71</li></ul>	<ul style="list-style-type: none"><li>• D7 or better or Dance &amp; Music Courses</li><li>• C6 or better for all other courses</li></ul>
Applications to be made directly to LASALLE / NAFAAE		



# Post Secondary Pathways for Express Students



# What is your post O Levels Pathway?



Chat with Ms Ginn,  
ECG Counsellor

Email : [tiang\\_ginn\\_wah@schools.gov.sg](mailto:tiang_ginn_wah@schools.gov.sg)  
Appointment Link : <https://go.gov.sg/plmgss-ecg>



# Thank You

