



December 2024

Annex - Traffic Safety & School Security Arrangements

We thank you for working with the school in ensuring the safety of our students. There has been a 5-minute adjustment to the operating hours of our school gates, to help ensure our girls report on time (i.e. 7.30 am on Mondays, Wednesdays Fridays; 8.30 am Tuesdays, Thursdays) in the classroom.

We seek your cooperation to take note of the following.

a) Operating Hours of School Gates

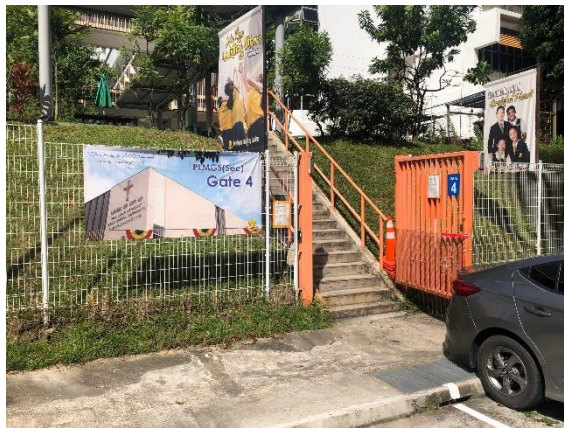
- **Gate 1:** The PLMGS(Sec) main gate is open on Mondays - Fridays from 6.30 am to 6.30 pm on a typical school day.
- **Gate 1A** (see photo below; next to guard house) will only be opened in the mornings from 6.30 am to 7.25 am on Mondays, Wednesdays and Fridays.



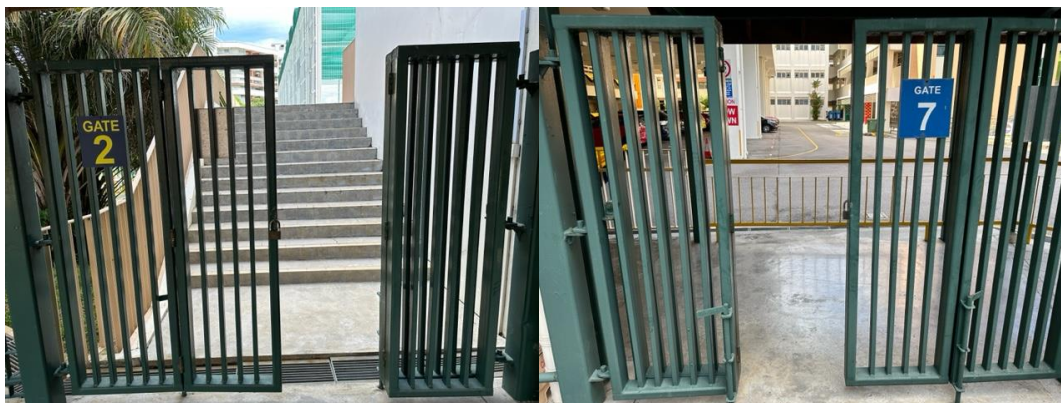
- **Gate 2** (Turnstile Gate at the bus-stop) is open from 6.30 am to 7.25 am (Mondays, Wednesdays, Fridays) and from 6.30 am to 8.25 am (Tuesdays, Thursdays). For school dismissal, it will be open from 1.30 pm to 6.30 pm. In the mornings, students who come to school by public transport should enter the school via this turnstile gate at the bus-stop near the school's parade square. The turnstile gate system is integrated with secured access control using students' registered EZ-Link cards. For Sec 1 students, their EZ-Link card access will be added by end of 6 Jan 2025.



- **Gate 4** (opposite Blk 134 Hougang Ave 1) is open from 6.45 am to 7.25 am. (Mondays, Wednesdays, Fridays) and 7.45 am to 8.25 am (Tuesdays and Thursdays).



- **Gate 6** (Jalan Lokam gate of PL(Pri)): PL(Sec) girls can make their way to school via Gate 6 at Jalan Lokam of PL(Pri) from 6.45 am to 7.25 am on Mondays, Wednesdays and Fridays, our non-late days. You can view a video of the route through PLMGS(Pri) if our PL-Lites are dropped off at Jalan Lokam: <https://go.gov.sg/routetoplmgssfromlokam>.
- **Gate 7** (Gate next to our Basketball courts): Parents with both PL(Pri) & PL(Sec) daughters can let the PL(Sec) girl alight at PL(Pri) drop-off point and make their way to school via Gate 7 (Gate 2 of PL(Pri)) from 6.45 am to 7.25 am daily.



b) Alighting Points Outside the School

The traffic along Lorong Ah Soo builds up significantly from 7 am onwards. To ease the flow of traffic into the school, we strongly encourage you to alight your daughters, at one of the two alighting points:

- Carpark @ HDB Bk 138 (Opposite the school beside Maplewood Park)
- Carpark @ HDB Bk 134 through School Side **Gate 4** (On the same side of the school. This gate will be open from 6.45 am to 7.25 am)



c) Drivers must Observe Traffic Rules

- The Speed Limit within the school compound is **15 km/h**. Please follow the direction given by the school staff and stay alert for pedestrians who may be walking around your vehicle. Drivers who drive against the road direction or disregard the instructions given by school staff and security guards may be banned from entering the school premise.
- When **driving out** of the school's front gate, please turn into the **leftmost/innermost lane first**. Do not drive directly into the right lane. **LTA has put in place a double white line to prevent drivers from doing so**. Additionally, the barrier sensor at the front gate will only activate when the car is close to it, so please drive closer and wait for the barrier to open.
- **The Traffic Police has advised that enforcement actions will be taken against motorists who violate traffic rules**. Please be advised that extra demerit points will be given for traffic offences in school zone.



- Please take note that from 7 am – 7.30 am, public buses serving Lorong Ah Soo (on same the side of the schools), will usually travel along the outermost lane, in order to avoid the jam. As the buses drive near to the bus stops, they will signal to change lane and turn into the bus bay. Please remember to give way to the buses and maintain a safe distance from them.

d) Dangerous Acts to avoid

We would like to highlight some dangerous acts that we seek your cooperation to remind your daughters not to commit:

- Crossing the road while listening to music or using mobile phone
- Dashing across the road at the last minute when the pedestrian light is flashing
- Dropping off from vehicle at unsafe place: next to the green barriers along the main road, at the U-turn lane just outside the school, at the outer lane while the cars are waiting for traffic light to change and at the entrance of Maplewood Park carpark

e) Avoid Walking Across PL(Pri) School Gates during rush hours

To ease the traffic flow turning into and out of our two schools, pedestrians are reminded not to walk across PL(Pri) school gates toward PL(Sec) before school starting hours and during school dismissal time.

Instead, pedestrians may come to school by walking along the opposite side of the road, and crossing the road at the traffic light crossing as shown in the picture below:



f) PL(Sec) Car Decal

- Do apply for the **PL(Sec) Car Decal** to gain admission into the school. Cars without a valid car decal may be denied entry into the school. You may apply for a car decal online at <https://go.gov.sg/plmgsscardecal>
- The car decal is a privilege that the school grants parents/guardians to drive into the school for the **sole purpose of dropping off and picking up** our PL-Lites. The car decal **does not grant** parents/guardians the right to park at the school. Parents are not allowed to park their cars in the secondary school in order to walk to PL(Pri) to fetch their daughters. As all parking lots are paid for by the staff members, please refrain from parking or waiting in the red lots which are for staff only.

Let us work together to create a safe and healthy environment for your daughters.

Thank you.

PL(Sec) School Management