



Paya Lebar
Methodist Girls' School (Secondary)
巴耶礼峇美以美女校 (中学)

2024 Singapore-Cambridge GCE O-Level Examinations

Release of Examination Results

*Welcome Back
PL Lites!*

10 JAN 2025 ♥

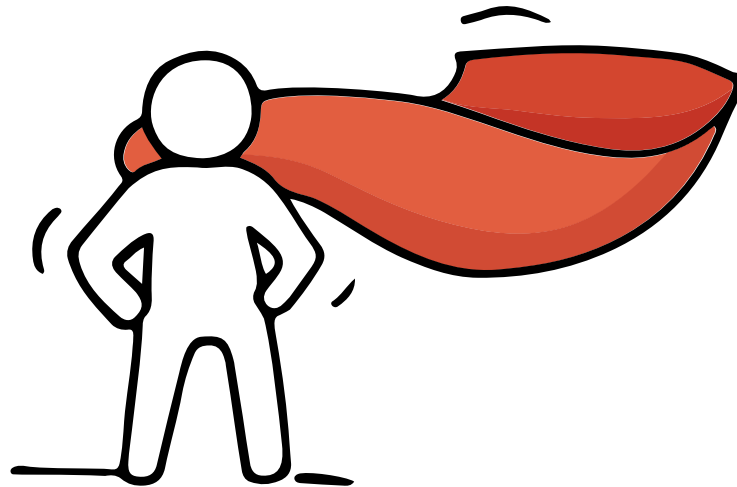


Dear students,

You have worked hard to reach this stage. Let's celebrate our efforts!



Remember that while **everyone's educational journey is different, we can each have a fulfilling outcome!**



Resources to support you as you receive your results

Receiving your results and making decisions about your post-secondary pathways can be exciting to some, but stressful to others.

Scan this QR code for an infographic with some helpful resources to support you.



<https://go.gov.sg/olevelstudentresource>



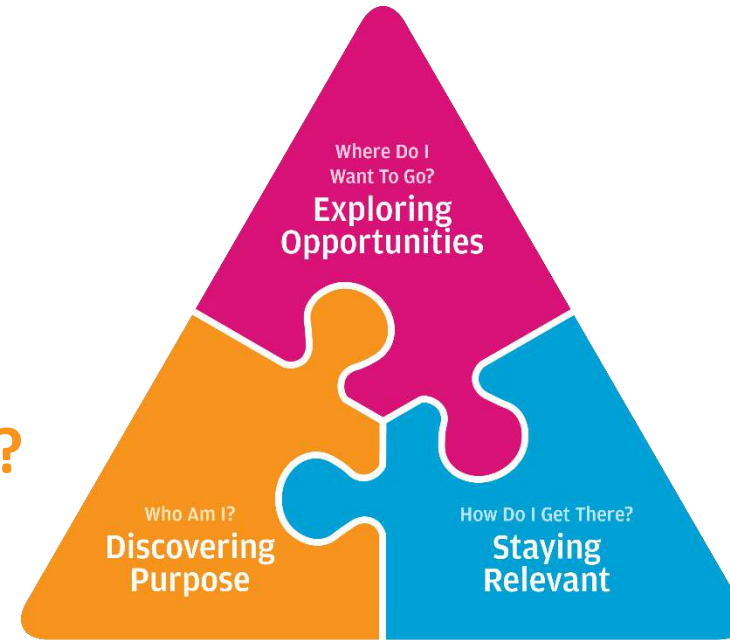
Thinking about Your Next Step?

Consider these questions...

Where do I want to go?

Who am I?

How Do I Get There?



Education & Career Guidance

In the infographic, you can find resources which can help you make informed decisions.

PLANNING YOUR NEXT STEP

These resources will help you chart your path ahead:



• What's Next Brochure

<https://go.gov.sg/whats-next-olevel>



• Contact the ECG Centre @ MOE

<https://go.gov.sg/moe-ecg-centre>



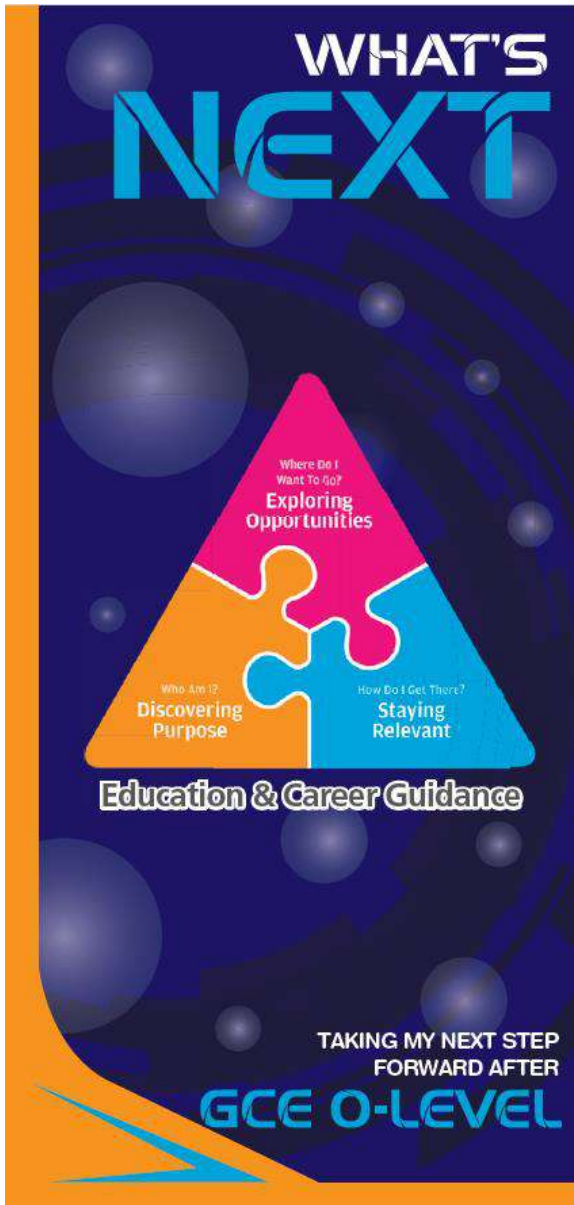
• MySkillsFuture Student Portal

<https://go.gov.sg/MySFSec>



• Chat with your school's ECG Counsellor

Resources to help you make informed decisions



PLANNING YOUR NEXT STEP

These resources will help you chart your path ahead:



- What's Next Brochure

<https://go.gov.sg/whats-next-olevel>



- Contact the ECG Centre @ MOE

<https://go.gov.sg/moe-ecg-centre>



- MySkillsFuture Student Portal

<https://go.gov.sg/MySFSec>



- Chat with your school's ECG Counsellor



MySkillsFuture Student Portal

Use the information and tools to explore various education and career pathways and take charge of your future.

Resources to help you make informed decisions

Information on Post-Secondary Education

Learn more about the admissions exercises and programmes



<https://moe.gov.sg/post-secondary/admissions>

Learn more about the post-secondary education institutions



<https://moe.gov.sg/post-secondary/overview>

About Discover On My Way (D:OMW)

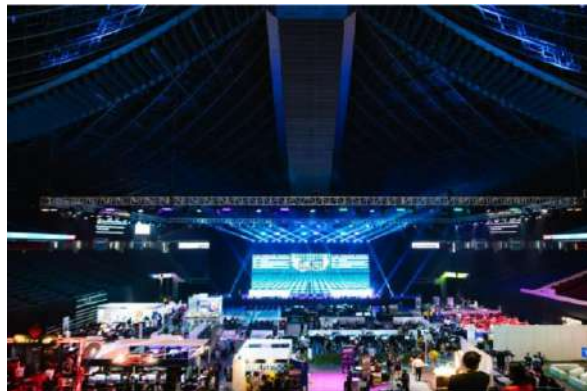
Discover your education and career interests and chart your personal and professional future with **Discover On My Way!** Explore different careers, connect with industry professionals and peers, and get firsthand exposure at various job roles. Let's get you on your way to discovering!

[Join Programmes!](#)

We know – deciding on which course to take and what career to pursue isn't easy... Through programmes organised by NYC and our partners, you'll be able to meet professionals from various industries and youth on the same journey as you.



Outward Bound Job Taster



Esports Events Management Job Taster



Career conversation and discovery



Concerned About Your Next Step?

Stop

- Calm yourself down. Take a few deep breaths.

Think

- Think through the different options that are available for you. Keep things in perspective.
- Remember that the O-Level is not the end point and is only one part of your life journey.

Do

- Have conversations with trusted adults who know you well to advise and guide you (parents, teachers, ECG counsellor).
- Decide and act based on your options.

When you receive your results, you may experience a range of emotions.

Managing these emotions well will allow you to stay calm and make rational decisions.

Reaching out for support is a sign of strength

If you have questions about your options or are not coping well, you can reach out to trusted adults such as a parent/guardian, teacher, school Counsellor or ECG Counsellor. You can also talk to a trusted friend.

Who can we go to for ECG advice?



Make an ECG counselling appointment via the ECG Centre @ MOE
<https://go.gov.sg/moe-ecg-centre>



Email Mrs Low at oh_hwee_hwee@moe.edu.sg 😊

Having difficult emotions during a stressful and uncertain period is normal. Keep a look out for some of these signs:

Keep a lookout for some of these signs in your peers or in yourself

How can we support one another?



D

Deliberately avoiding others

I

Increased irritability, restlessness, agitation, stress and anxiety

S

Sending or posting moody messages on social media

T

Talking about death or dying

R

Reacting differently or gradually losing interest in things they used to like

E

Eating more than usual or having a much reduced appetite

S

Sleep pattern changes with difficulty falling asleep or oversleeping

S

Slowing down of energy levels

If you notice any of these signs in yourself or your friends, **have a chat with your School Counsellor or teacher,**

Or contact SOS 24-hour hotline at **1767** or SOS 24-hour CareText Whatsapp at **91511767**
For cyber wellness related matters, call Help123 at **1800-612-3123*** or email **hello@help123.sg**

**available only from Mon to Fri (excluding Public Holidays), from 9am - 6pm.*



Ministry of Education
Singapore

© 2023 Guidance Branch, Student Development Curriculum Division (SDCD), Ministry of Education, Singapore. No part of this final product may be reproduced or transmitted in any form or by any means, electronic or mechanical, including photocopy, recording or any other information storage and retrieval system, without written permission from SDCC, MOE.

Supporting Your Friend

- We may each experience different emotions upon receiving the results.
- You can share your friends' joy by congratulating them or give words of encouragement to friends who may be disappointed with their results.



Keep a lookout for your friends in distress. You can support them in the following ways:



Support is readily available for you.

There are other hotlines and chats available if you are more comfortable seeking help using these platforms. These can also be found in the infographic which you accessed earlier.



<https://go.gov.sg/olevelstudentresource>

SOS provides round-the-clock emotional support for those in distress, thinking of suicide or affected by suicide.

Call: **1767**
(24-hour helpline)

Whatsapp: **9151 1767**
(24-hour Care Text)

TOUCHline is a helpline to provide youths with emotional support and practical advice.

Call: **1800-377 2252**

*Monday- Friday (Excluding Public Holidays):
9am – 6pm*

Community Health Assessment Team

(CHAT) provides personalised and confidential mental health checks and consultation for youths. To speak with a youth support worker, you can:

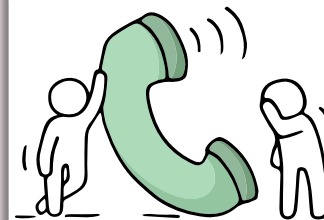
Visit: **CHAT Hub at *Scape, 2 Orchard Link, #04-01A**

Call: **6493 6500/ 6501**

Email: **CHAT@mentalhealth.sg**

mindline.sg is an online platform that provides tools, tips and resources to help you manage your health and well-being. Find out more at:

www.mindline.sg



Carey is an online platform by Care Corner that provides free mental health check-ins with mental health professionals. Find out more at:
<https://carey.carecorner.org.sg/>

eC2 is an e-Counselling Centre where you can talk to a trained counsellor about the issues you are facing, right where you are.

Chat with a counsellor at:

www.ec2.sg

*Monday – Friday (Excluding Public Holidays):
10am – 12pm & 2pm – 5pm*

OPEN HOUSE

2025

WHEN?

Different Dates in Jan

WHERE?

**Collated information
sent to your PLMGSS
email**

**The O-Level examination
is not the destination.**

**It is part of your
education journey.**

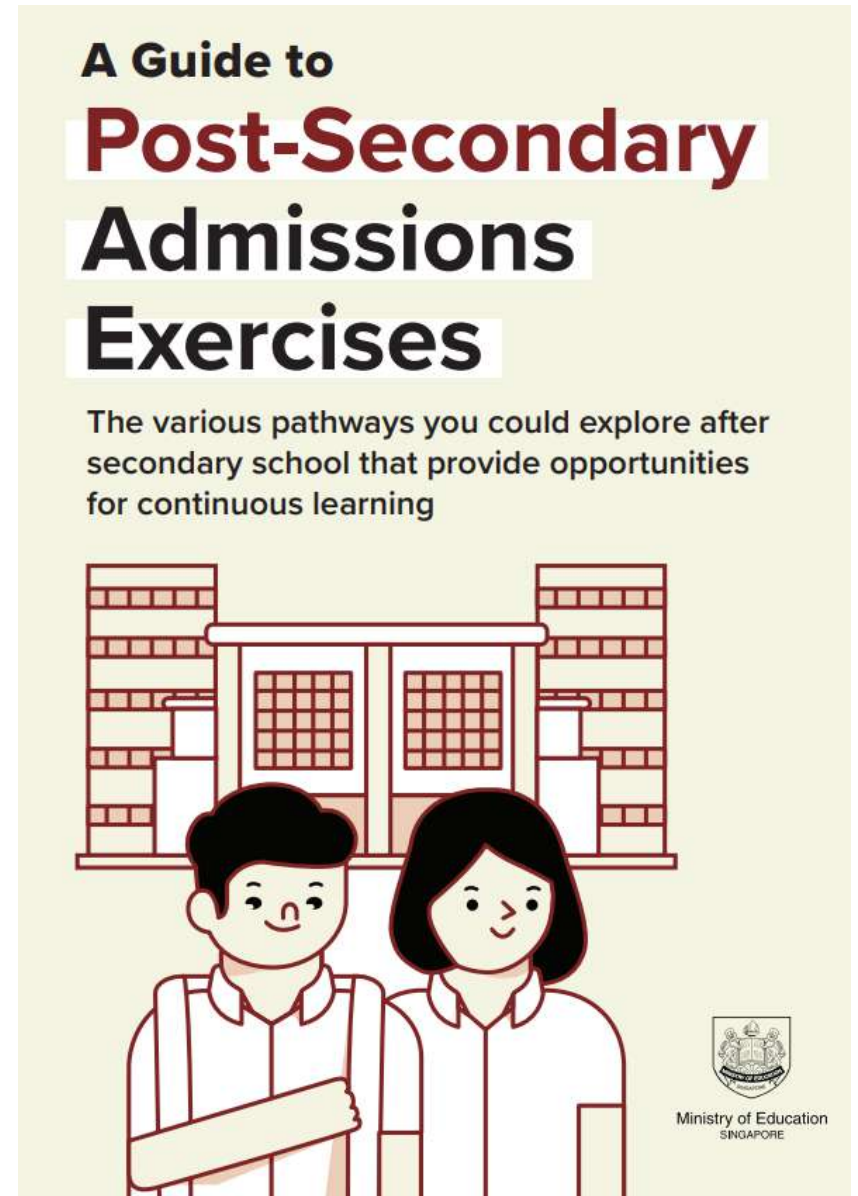


Details of Admissions Exercises

You can find the details of the various admissions exercises from the **Post-Secondary Admissions Exercises booklet** that can be downloaded from:

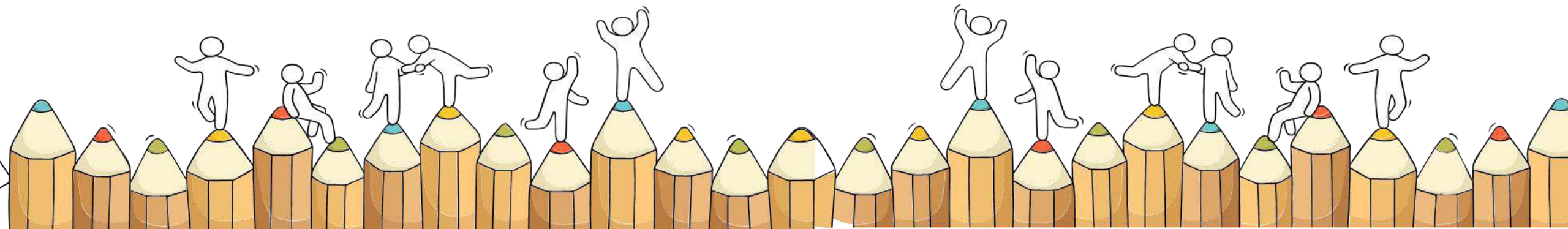
<https://www.moe.gov.sg/post-secondary/admissions>

- JAE
- JIE 'O'
- LASALLE
- NAFA

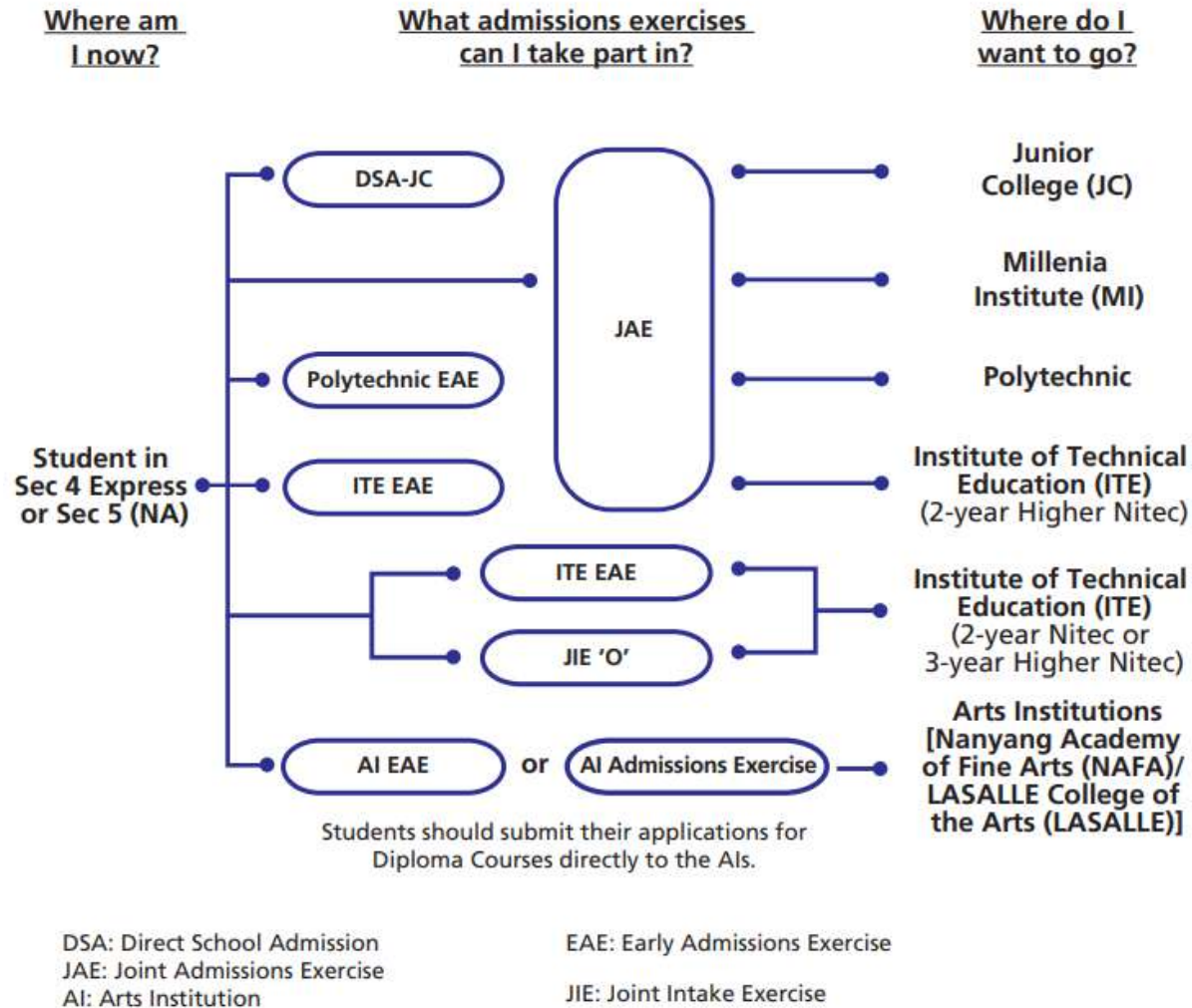


Admissions Exercises

Things to note



Post-Secondary Admissions Exercises for O-Level Students



<https://www.moe.gov.sg/post-secondary/admissions>

For the list of Nitec/Higher Nitec courses, please visit <https://www.ite.edu.sg/courses/full-time-courses/nitec-and-3-year-higher-nitec> .

Application Timeline

Admissions Exercises	LASALLE NAFA	JAE JIE 'O'
Application Period	Starts Oct 2024	Jan 2025



Joint Admissions Exercise JAE 2025

Junior Colleges (JC)/ Millennia Institute (MI)

Polytechnics (Poly)

Institute of Technical Education (ITE)

**Applications should be submitted online through the
JAE-Internet system (JAE-IS) using Singpass**

<https://www.moe.gov.sg/post-secondary/admissions/jae>



JAE 2025

The JAE registration will commence on the **same day** as the release of the 2024 GCE 'O' Level Examination results.

The **registration period** is from:

4.00pm on **10 Jan (Fri)**

to **4.00pm** on **15 Jan (Wed)**



JAE 2025

All students will receive **Form A** via email.

If not, please log in to the JAE Internet System (JAE-IS) using Singpass to download the Form A.

If you still encounter issue, please inform the school.

All students successfully admitted to a school through the Direct School Admission-JC (**DSA-JC**) / Early Admission Exercise (**Poly-EAE**) will **not** be eligible to participate in JAE.



Ministry of Education
SINGAPORE

20XX Joint Admissions Exercise

Form A

Name : TEST NAME 000684-1111 Address : 111 BUKIT BATOK EAST AVENUE 1 #11 -11 SINGAPORE 111111 School Code : 1111		Centre Index No. : 222222217
---	--	------------------------------

Please apply your course choices by **DD/MM/YYYY, 04:00 PM**.

Your 20XX GCE O-Level Examination results:

ENGLISH LANGUAGE = A2, MALAY = B3, MATHEMATICS = C6, SCIENCE (CHEMISTRY & BIOLOGY) = B3,
PRINCIPLES OF ACCOUNTS = B3, HUMANITIES (SOCIAL STUDIES, HISTORY) = B3, GEOGRAPHY = C5
CCA = EXCELLENT

Subject description and grade obtained

Your gross aggregate scores (without bonus points):

JC	MI	Polytechnic				ITE		
L1R5	L1R4	ELR2B2-A	ELR2B2-B	ELR2B2-C	ELR2B2-D	ELB4-A	ELR1B3-B	ELR2B2-C
19	14	14	17	17	17	14	14	17

Aggregate types and gross aggregate scores (without bonus points)



Sample Form A

Your eligible courses:

- You meet the entry requirements for the below courses and are eligible to apply. However, a place in the course is not guaranteed as admission is based on merit, your choices and available vacancies.
- Course codes and descriptions can be found in www.moe.gov.sg/jaecourses.

Explore JAE courses

JC/MI:

You are eligible for all JC/MI courses.

Eligible courses

Courses that you are eligible for

Polytechnic/ITE:

C- Nanyang Polytechnic, N- Ngee Ann Polytechnic, R- Republic Polytechnic, S- Singapore Polytechnic, T- Temasek Polytechnic
V- Institute of Technical Education

C27	C28	C29	C30	C31	C32	C34	C35	C36	C38	C41	C42	C43	C45	C46	C47	C49	C50	C51
C52	C54	C62	C65	C67	C69	C70	C71	C72	C73	C75	C80	C81	C85	C87	C89	C93	C94	C96
C97	C98	N11	N12	N13	N14	N15	N40	N41	N42	N43	N44	N45	N48	N50	N51	N53	N54	N55
N56	N57	N59	N60	N65	N67	N69	N71	N72	N73	N74	N81	N82	N83	N85	N91	N93	N94	N96
N97	N98	R11	R12	R13	R14	R16	R17	R18	R19	R21	R22	R24	R25	R26	R28	R32	R33	R34
R35	R36	R37	R39	R40	R42	R43	R45	R46	R47	R48	R49	R50	R52	R54	R55	R56	R57	R58
R59	R60	R61	R62	R63	R64	R65	S28	S29	S30	S31	S32	S38	S40	S42	S47	S48	S50	S53
S54	S63	S64	S66	S67	S68	S69	S70	S71	S73	S74	S75	S76	S88	S89	S90	S91	S94	S95
S98	S99	T01	T02	T04	T07	T08	T09	T10	T13	T18	T20	T22	T23	T25	T26	T28	T29	T30
T33	T35	T38	T40	T43	T45	T48	T50	T51	T53	T56	T58	T59	T60	T62	T63	T64	T65	T66
T67	T68	T69	T70	T71	V10	V11	V12	V13	V14	V15	V16	V17	V18	V19	V20	V21	V22	V23
V24	V25	V26	V27	V28	V29	V30	V31	V32	V33	V34	V35	V36	V39	V40	V42	V47	V49	V52
V53	V54	V55	V60	V61	V62	V63	V64	V65	V66	V67	V68	V69	V70	V71	V72	V73	V74	V75
V76	V77	V78	V79	V80	V81	V82	V84	V85	V87	V88	V89	V90	V91	V92	V93	V94	V96	V97
V98																		

Eligibility does not guarantee Placement

Note:

- You can also apply for 3-year *Higher Nitec* and 2-year *Nitec* courses in the Joint Intake Exercise (JIE) conducted by ITE. Please refer to www.ite.edu.sg for more information.



JAE 2025

You should complete the **JAE Worksheet** before submitting the online application

You are advised to make full use of the **12 choices and choose wisely.**

(Refer to **JAE Website** for important points to note, and the full listing of 2025 JAE courses. You can also use the SchoolFinder and CourseFinder.)

JAE worksheet



JAE website





JAE 2025 - THINK ABOUT

- What are the different types of courses and institution I can apply for?
- How can I make the best use of my **12 choices**?

Passion, Practical and Prudent

- Make the **best** use of your 12 choices where your first 3 choices should be courses that you are
 1. Very passionate about.
 2. Close to the cut off point.



JAE 2025 BONUS POINTS

1. You can get a maximum of 4 bonus points from a combination of any of these types:

Type of bonus points	No. of bonus points
CCA grade <ul style="list-style-type: none">• Excellent• A1 or A2	2
CCA grade <ul style="list-style-type: none">• Good• B3 to C6	1
English and Higher Mother Tongue Language grade <ul style="list-style-type: none">• A1 to C6	2
Chinese or Malay (Special Programmes) or Bahasa Indonesia grade <ul style="list-style-type: none">• A1 to C6	2
Affiliated JC <ul style="list-style-type: none">• Selected as your 1st choice• Selected as your 1st and 2nd choice	2

2. You can get an additional 2 bonus points if you have applied and are selected for Chinese, Malay or Tamil Language Elective Programme

- [Chinese Language Elective Programme](#)
- [Malay Language Elective Programmme](#)
- [Tamil Language Elective Programme](#)



- If you are admitted to these programmes, you must offer the respective subject and sit for its GCE A-Level examination.
- Regardless of whether the 2 bonus points were considered for your posting, you are required to remain in the programme while studying in the JC. If not, you can be asked to leave the school.



JAE 2025

JAE Posting is released through:

- JAE-IS, which you can access using your Singpass.
- SMS, if you have provided a local mobile number in your application.

Students who are offered a course in a **JC/MI** must report to the JC/MI on the morning of Wednesday, 5 February 2025.

Students who are offered a course in a **Poly/ITE** should expect to receive enrolment instruction and are required to complete **online enrolment** by the date stipulated to confirm your acceptance for the course of study.

Student who fails to report to the JC/MI/Poly/ITE on the stipulated dates is deemed to have forfeited her place.



JOINT POLY/ITE ONLINE APPEAL PORTAL

If you want to submit an appeal:

- **For junior colleges (JC) and Millennia Institute (MI)**, approach the school of choice directly. Use [SchoolFinder](#) to find the school's contact details.
- **For polytechnics and Institute of Technical Education (ITE)**, you can check the appeal submission timeline and submit your appeal through the [JAE Online Appeal Portal](#). On the appeal portal, under "**Courses**", you can find the latest net aggregate scores to guide you in choosing the courses to appeal for.



Poly Foundation Programme

Current 5N students and Newly Eligible

4(NA) students to note

Eligible students who have obtained a raw ELMAB3 of 12 points of better and meet the subject-specific requirements for their chosen course can apply for PFP

Eligible students will receive Form P which contains a unique pin which they can submit online via the PFP portal

https://pfp.polytechnic.edu.sg/PFP/pfp_application.html



PFP

**Current 5N students and Newly Eligible
4(NA) students to note**

Application **10 Jan Fri (130pm) to 15 Jan Wed (4pm)**

Posting results **22 Jan Wed (130pm)**

Students are to indicate their wish to accept,
reject, or appeal for a course change

Between 22 Jan (130pm) to 27 Jan (4pm)

Outcome of appeal – **5 Feb (130pm), accept by 7 Feb (4pm)**

In case of any discrepancy, the information on the PFP website shall prevail.



DPP

Current 5N students and Newly Eligible 4(NA) students to note

Eligible Secondary 4 N(A) students may go to <https://www.ite.edu.sg/apply-for-ITE-courses/dpp> to submit your application.

Final Application Phase **10 Jan Fri to 14 Jan Tues**

Application Results & Acceptance of Offer **17 Jan Fri**

Students are to indicate their wish to accept, reject, or appeal for a course change **by 21 Jan.**

In case of any discrepancy, the information on the DPP website shall prevail.



For successful PFP/DPP applicants

Students offered a place in DPP under the final application phase should report to ITE college by the stipulated dates to register for their course.

Students will be informed by the respective polytechnics on the enrolment dates for PFP.



LEP Briefing Sessions



For students who offered HMTL

The Language Elective Programme (LEP) for Chinese, Malay, and Tamil aims to nurture promising students to attain a high level of language proficiency in their Mother Tongue Language (MTL), and enhance their understanding of MTL Literature and culture.

Eligibility

Students must obtain at least:

Grade B3 in Higher Chinese/Malay/Tamil or

Grade B4 in HMT and B3 in Literature in Chinese/Malay/Tamil (Full or Elective) or

Grade A2 in Chinese/Malay/Tamil Language

All LEP students at the Pre-U level must offer H2 Chinese/ Malay/ Tamil Language & Literature at A-Level.

Outstanding students selected for the programme may be considered for the **Language Elective Scholarship.**

Chinese Language Elective Programme

LEP	Date	LEP School	Time of LEP Briefing and Venue	Name and Email Address of Teacher-in-charge
CLEP	11 Jan 2025 (Sat)	Dunman High School (College)	11:45am – 12:30pm LT1 (Blk B Level 2)	Mdm Hong Lan hong.lan@dhs.edu.sg
	14 Jan 2025 (Tue)	Hwa Chong Institution (College)	3.00pm – 3.30pm LT4 (College)	Ms Yeo Tan Ching yeotc@hci.edu.sg
	13 Jan 2025 (Mon)	Jurong Pioneer Junior College	1.15pm – 1.45pm CLEP Room 1 (Block A Level 3)	Mrs Tan-Lim Soh Whee tan-lim_soh_whee@schools.gov.sg
	11 Jan 2025 (Sat)	Nanyang Junior College	11.00am – 12.00pm CLEP Room 0559/60	Ms Ma Yuexia ma_yuexia@schools.gov.sg
	14 Jan 2025 (Tue)	Temasek Junior College	2.00pm – 3.00pm / 3.30pm – 4.30pm CLEP Room (J105)	Mr Pan Xu pan_xu@schools.gov.sg

Malay Language Elective Programme

LEP	Date	LEP School	Time of LEP Briefing and Venue	Name and Email Address of Teacher-in-charge
MLEP	13 Jan 2025 (Mon)	Jurong Pioneer Junior College	1.15pm – 1.45pm Arcadia Room	Mdm Siti Atiqah Punari siti_atiqah_punari@moe.edu.sg
	11 Jan 2025 (Sat)	National Junior College	10.00am - 2.00pm Room No. TA12	Ms Iryianna Ahmad iryianna_ahmad@moe.edu.sg
	14 Jan 2025 (Tue)	Raffles Institution	10.00am - 2.30pm Innovation Centre	Mr Mohamed Ali Hanifiah hanifiah.a@ri.edu.sg
	11 Jan 2025 (Sat)	Tampines Meridian Junior College	10.00am – 3.00pm Outside LT2, Level 1	Mdm Faten Hana Mustafa faten_hana_mustafa@schools.gov.sg
	13 Jan 2025 (Mon)	Yishun Innova Junior College	10.00am - 5.00pm Library	Mdm Najmah Sidik najmah_sidik@moe.edu.sg

Tamil Language Elective Programme

LEP	Date	LEP School	Time of LEP Briefing and Venue	Name and Email Address of Teacher-in-charge
TLEP	14 Jan 2025 (Tue)	Anderson Serangoon Junior College	10.00am – 5.00pm TLEP Room (Block C, Level 1, Room 1)	Mdm Kamalavani Palaiyan kamalavani_palaiyan@schools.gov.sg
	11 Jan 2025 (Sat)	National Junior College	10.00am – 2.00pm Room TA12	Mr Shahul Hameed shah_mohamed@schools.gov.sg

Details of Admissions Exercises



JAE – Joint Admissions Exercise

JAE enables GCE O-level holders to apply for courses offered by JCs, MI, polytechnics and ITE (2-year *Higher Nitec* courses).

JAE: <http://go.gov.sg/applyjae>



JIE 'O' – Joint Intake Exercise 'O'

The JIE 'O' is conducted to enable GCE O-Level holders to apply for the 2-year *Nitec* or 3-year *Higher Nitec* courses conducted by ITE.

JIE 'O': <https://go.gov.sg/applyjie>

Details of Admissions Exercises



Arts Institutions - NAFA/LASALLE

GCE O-Level holders with the aptitude and interest to pursue the creative arts at the tertiary level may apply for diploma programmes at the Arts Institutions (AIs). Each AI runs its own admissions exercise, and interested students should apply directly to the institution.

The AIs also run their own Early Admission Exercise, an aptitude-based admissions exercise open to graduating O-Level students, final-year *Nitec* and *Higher Nitec* students from ITE and graduating Integrated Programme (IP) / International Baccalaureate (IB) Year 4 students. This exercise allows students to apply for and receive conditional offers for admission to NAFA and LASALLE prior to receiving their final grades.

NAFA: <http://go.gov.sg/applynafa>

LASALLE: <https://go.gov.sg/applylasalle>

For Students Considering Private Education



The 3Rs when deciding on Private Education

Reasons

- Why are you furthering your studies?
- What are the job prospects for your preferred course?

Readiness

- How ready are you to further your studies?
- Can you cope with the academic rigour and assignment deadlines?
- Can you fund your studies?

Risks

- Do you know the possible drawbacks?
 - Your expected returns may not exceed the investments you put into your private education.
 - Private schools may make exaggerated claims.
 - Private schools may close due to various reasons.
 - You may not get a full refund if you withdraw from your course.



8 Things You Should Know Before You Enrol in A Private School



<https://go.gov.sg/choosingapei>



School Registration

Ensure the school is registered with SkillsFuture Singapore (SSG). Review the school's registration period, expiry date and its overall registration track record.



Partner Institution

Research on the partner institution conferring the diploma or degree, and whether the qualification is recognised by the industry.

EduTrust Certification Scheme

Is the school EduTrust-certified*? Under the scheme, private schools are assessed for their performance in areas such as school management and provision of student support services.



**Schools are required to obtain EduTrust certification in order to offer external degree programmes*

School Premises

Head down to the campus ground to check the facilities and support services. Observe the study environment too.



Fee Protection



Ask if there is any course fee protection so that you will be able to recover unconsumed course fees should the school close down.

Beyond Course fees



Find out about the course syllabus and materials, graduation rates and employment prospects. Approach the alumni to find out what they think of the school.

Teachers

Check if the teachers are qualified to teach the course.



Internship

If industry attachment is included, find out which organisation you will be attached to, the period of attachment and the alternative arrangement should the attachment become unavailable. Verify the information with the organisation as well.





Financial Aid

Financial Aid is available to needy students studying Full Time at **JCs/MI, Polytechnics** and **ITE** (check websites for more info).



Availability of computers in school for JAE Registration

Venue: General Office

Attire: School Uniform

Dates: 10 Jan (4 pm – 5 pm)
13, 14, 15 Jan (9 am – 4 pm)



Appeal for Review of Results

~\$114.45 per subject

(Candidates who do not have strong grounds for submitting an appeal are discouraged from doing so)

See Ms Lim Lin Lin & obtain the forms from the General Office



All The Best!

Just Shine!