



PAYA LEBAR METHODIST GIRLS' SCHOOL (SECONDARY)

Welcome Back PL Lites!

**2024 Singapore-Cambridge
GCE N(A) & N(T) Examinations**

Shaw Hall

16 Dec 2024 MONDAY, 2 pm





TODAY'S PROGRAMME

Items		By
Welcome & General Information		Mrs Low
Release of the 2024 GCE N-Level Results		Ms Amy Ng
Release of Result Slips & relevant forms & materials		Form Teachers
Break-out ECG Info Sessions:		
A	<ul style="list-style-type: none">For students who require more support in ITE course selection and application (back of hall)	Ms Priscilla Chong
B	<ul style="list-style-type: none">Briefing on PFP, DPP, 3-year Higher Nitec and Sec 5 pathways (students taking mainly G2/NA subjects)	Mr Tan Tiah Hui
C	<ul style="list-style-type: none">Appeals / Review of gradesAmendments (if any) by students on documents (e.g. Certificates)	Ms Lim Lin Lin



BREAKOUT ECG INFO SESSIONS

Stage

Group B:

Briefing on PFP, DPP and Sec 5 pathways
(students taking mainly G2/NA subjects)

Group A:

For students who require more
support in ITE course selection
and application

TV projection

Dear students,

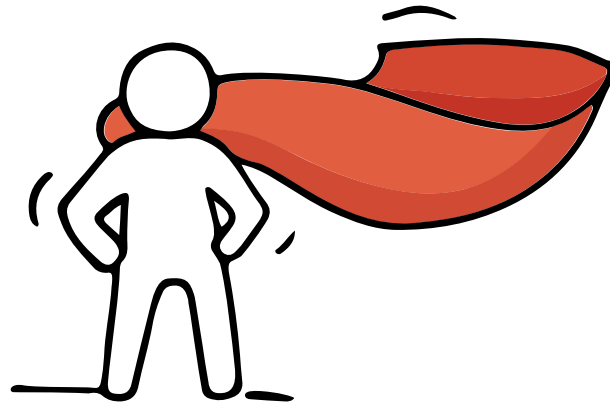
You have worked hard to reach this stage. Let's celebrate your efforts!



*Finally, we are going to
get our results!*



Remember that while **everyone's educational journey is different, we can each have a fulfilling outcome!**



Resources to support you as you receive your results

Receiving your results and making decisions about your post-secondary pathways can be exciting to some, but stressful to others.

Scan this QR code for an infographic with some helpful resources to support you.



<https://go.gov.sg/nlevelstudentresource>



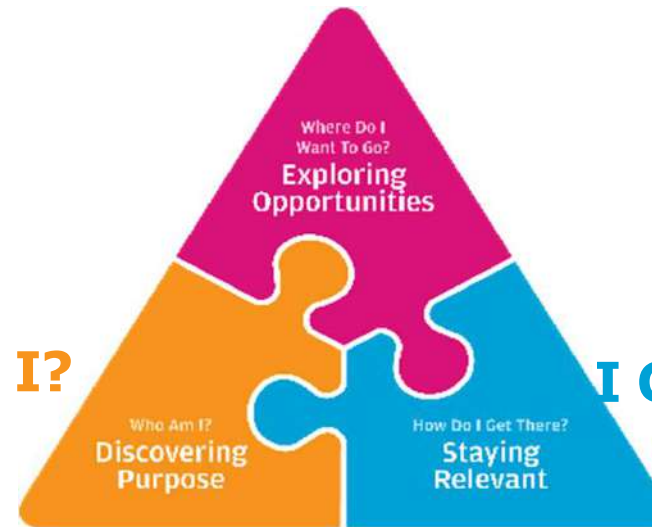
Thinking about Your Next Step?

Consider these questions...

Where do I want to go?

Who am I?

How Do I Get There?



In the infographic, you can find resources which can help you make informed decisions.

PLANNING YOUR NEXT STEP

These resources will help you chart your path ahead:



• What's Next Brochure
<https://go.gov.sg/whats-next-nlevel>



• Contact the ECG Centre @ MOE
<https://go.gov.sg/moe-ecg-centre>



• MySkillsFuture Student Portal
<https://go.gov.sg/MySFSec>



• Chat with your school's ECG Counsellor

Resources to help you make informed decisions



PLANNING YOUR NEXT STEP

These resources will help you chart your path ahead:

- What's Next Brochure
<https://go.gov.sg/whats-next-nlevel>
- Contact the ECG Centre @ MOE
<https://go.gov.sg/moe-ecg-centre>
- MySkillsFuture Student Portal
<https://go.gov.sg/MySFSec>
- Chat with your school's ECG Counsellor



MySkillsFuture Student Portal

Use the information and tools to explore various education and career pathways and take charge of your future.

Resources to help you make informed decisions

Post-Secondary Education

Learn more about the admissions exercises and programmes



<https://www.moe.gov.sg/post-secondary/admissions>

Learn more about the post-secondary education institutions



<https://go.gov.sg/overview-psels>

<https://moe.gov.sg/post-secondary/overview>

Be Empowered

Discover On My Way



About Discover On My Way (D:OMW)

Discover your education and career interests and chart your personal and professional future with **Discover On My Way!** Explore different careers, connect with industry professionals and peers, and get firsthand exposure at various job roles. Let's get you on your way to discovering!

[Join Programmes!](#)

We know – deciding on which course to take and what career to pursue isn't easy... Through programmes organised by NYC and our partners, you'll be able to meet professionals from various industries and youth on the same journey as you.



Outward Bound Job Taster



Esports Events Management Job Taster



Career conversation and discovery



<https://go.gov.sg/dom>

Concerned about your next steps?

Stop

- Calm yourself down. Take a few deep breaths.

Think

- Think through the different options that are available for you.
- Remember that the N-Level is not the end point and is only one part of your life journey.

Do


- Have conversations with trusted adults who know you well to advise and guide you (parents, teachers, ECG Counsellor).
- Decide and act based on your options.

When you receive your results, you may experience a range of emotions.

Managing these emotions well will allow you to stay calm and make rational decisions.

Reaching out for support is a sign of strength

If you have questions about your options or are not coping well, you can reach out to trusted adults such as a parent/guardian, teacher, School Counsellor or ECG Counsellor. You can also talk to a trusted friend.



Who can we go to for ECG advice?

Make an appointment to speak with your ECG Counsellor in school

OR

Make an ECG counselling appointment via the ECG Centre @ MOE

<https://go.gov.sg/moe-ecg-centre>





ECG SUPPORT AT PLMGSS



Online or Face to Face Session with Ms Chong, ECG Counsellor

Ms Chong will be available from 16th – 18th Dec, 9am – 5pm for ECG Counselling

Book an Appointment : <https://go.gov.sg/plmgss-ecg>

Support by School

Mrs Low Hwee Hwee, HOD CCE / Mr Wong Khai Yu, YH

Email: oh_hwee_hwee@moe.edu.sg / wong_khai_yu@moe.edu.sg

Online or Phone Counselling by MOE ECG Centre

Contact : 6831 1420

Emil: MOE_ECG@moe.gov.sg or

Book an Appointment : <https://go.gov.sg/moe-ecg-centre>

'N' Level support by ITE

ITE College Central | Tel: 1800 222 2111 | college_central@ite.edu.sg

ITE College East | Tel: 6590 2262 | college_east@ite.edu.sg

ITE College West | Tel: 6590 2628 | college_west@ite.edu.sg

Before the Session

- Do your course exploration and shortlisting
- Jot down any questions you might have
- Find out your CCA grade

Please have these ready for the ECG session

- Result Slip & Form N
- Prelim Result Slip if you are taking O level subject(s)

Having difficult emotions during a stressful and uncertain period is normal. Keep a look out for some of these signs:

Keep a lookout for some of these signs in your peers or in yourself

How can we support one another?



**D
I
S
T
R
E
S
S**

Deliberately avoiding others

Increased irritability, restlessness, agitation, stress and anxiety

Sending or posting moody messages on social media

Talking about death or dying

Reacting differently or gradually losing interest in things they used to like

Eating more than usual or having a much reduced appetite

Sleep pattern changes with difficulty falling asleep or oversleeping

Slowing down of energy levels

If you notice any of these signs in yourself or your friends, **have a chat with your School Counsellor or teacher,**

Or contact SOS 24-hour hotline at **1767** or SOS 24-hour CareText Whatsapp at **91511767**

For cyber wellness related matters, call Help123 at **1800-612-3123*** or email **hello@help123.sg**

*available only from Mon to Fri (excluding Public Holidays), from 9am - 6pm.



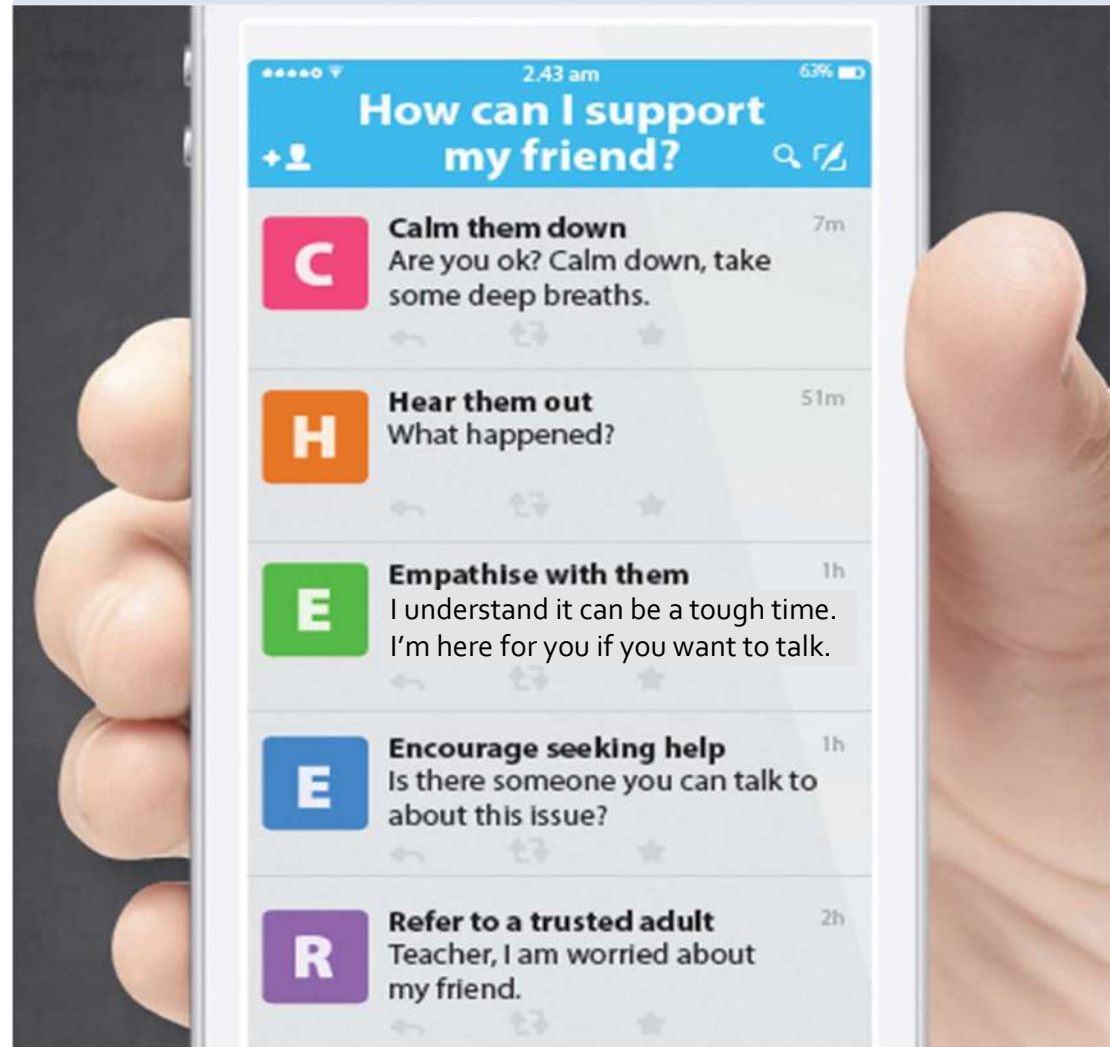
© 2025 Guidance Branch, Student Development Curriculum Division (SDCD), Ministry of Education, Singapore. No part of this final product may be reproduced or transmitted in any form or by any means, electronic or mechanical, including photocopy, recording or any other information storage and retrieval system, without written permission from SDCCD, MOE.

Supporting Your Friend

- We may each experience different emotions upon receiving the results.
- You can share your friends' joy by congratulating them.
- If your friends appear to be disappointed with their results, encourage them.
- Alert a teacher if you are worried for them.



Keep a lookout for your friends in distress. You can support them in the following ways:



Support is readily available for you.

There are other hotlines and chats available if you are more comfortable seeking help using these platforms. These can also be found in the infographic which you accessed earlier.



SOS provides round-the-clock emotional support for those in distress, thinking of suicide or affected by suicide.

Call: **1767**
(24-hour helpline)

Whatsapp: **9151 1767**
(24-hour Care Text)

Community Health Assessment Team (CHAT) provides personalised and confidential mental health checks and consultation for youths. To speak with a youth support worker, you can:

Visit: **CHAT Hub at *Scape, 2 Orchard Link, #04-01A**

Call: **6493 6500/ 6501**

Email: **CHAT@mentalhealth.sg**

mindline.sg is an online platform that provides tools, tips and resources to help you manage your health and well-being. Find out more at: www.mindline.sg



TOUCHline is a helpline to provide youths with emotional support and practical advice.

Call: **1800-377 2252**

*Monday- Friday (Excluding Public Holidays):
9am – 6pm*

Carey is an online platform by Care Corner that provides free mental health check-ins with mental health professionals. Find out more at: <https://carey.carecorner.org.sg/>

eC2 is an e-Counselling Centre where you can talk to a trained counsellor about the issues you are facing, right where you are.

Chat with a counsellor at:

www.ec2.sg

*Monday – Friday (Excluding Public Holidays):
10am – 12pm & 2pm – 5pm*



**The N-Level
examination is not
the end point.**

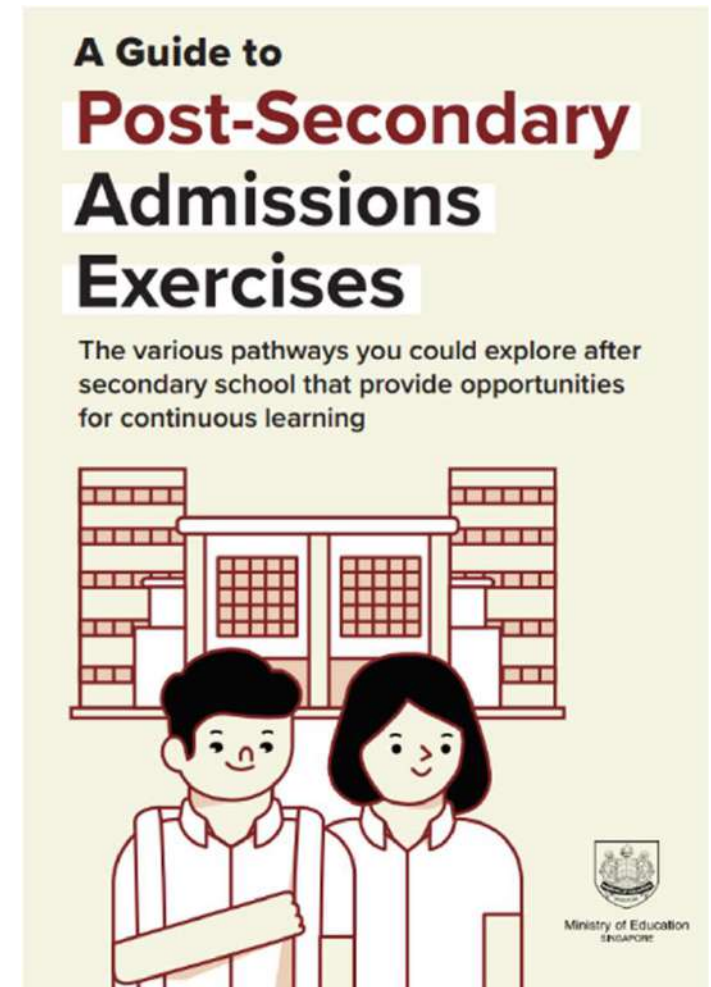
**It is part of your
education journey.**

Details of Admissions Exercises

You can find the details of the various admissions exercises from the **Post-Secondary Admissions Exercises booklet** that can be downloaded from:

<https://www.moe.gov.sg/post-secondary/admissions>

- DPP
- PFP
- Joint Intake Exercise 'N' / 'E'
- NAFA Foundation Programme






WHAT DO I HAVE TO DO?

1. Check Results Slip and Form N
2. List eligible PFP/DPP/ITE courses and choice of campus
3. Calculate points based on selected courses
4. Take note of course criteria
5. Take note of timelines for different phase of applications
6. Ensure that your personal particulars (**valid email address, mobile number, residential address**) are updated for the application of courses online. Your email address will be used to provide you with details of your application and your Enrolment Letter (if successful).

RESOURCES FOR STUDENTS

Additional Information For Students

The information listed in the table below will help you to make an informed decision on which choice of courses you could consider applying at ITE.

S/N	Information	Attachment/Link
1	ITE Factsheet 2024	 2024 JIEN Factsheet
2	ITE Course Booklet 2025	https://www.ite.edu.sg/courses/full-time-courses/download-ite-course-booklet
3	ITE Admission and Course Brochure 2025 for JIE	admission-and-course-information-brochure-jan-2025.pdf (ite.edu.sg)
4	Information on Progression Opportunities (From <i>Nitec</i> Courses to <i>Higher Nitec</i> and Technical diplomas)	https://www.ite.edu.sg/admissions/full-time-courses/nitec-certificate
5	Information on Progression Opportunities (from <i>Higher Nitec</i> courses to diploma courses)	https://www.ite.edu.sg/admissions/full-time-courses/higher-nitec-certificate



ADMISSION & COURSE INFORMATION BROCHURE FOR JANUARY 2025 JOINT INTAKE EXERCISE (JIE) FOR FULL-TIME COURSES



NOTE TO GCE 'N' LEVEL HOLDERS

Congratulations to all GCE 'N' Level holders for completing your secondary school education! You will receive a Form N, showing the list of full-time ITE courses you are eligible to apply based on your GCE 'N' Level results, through your school on the day when the 2024 GCE 'N' Level examination

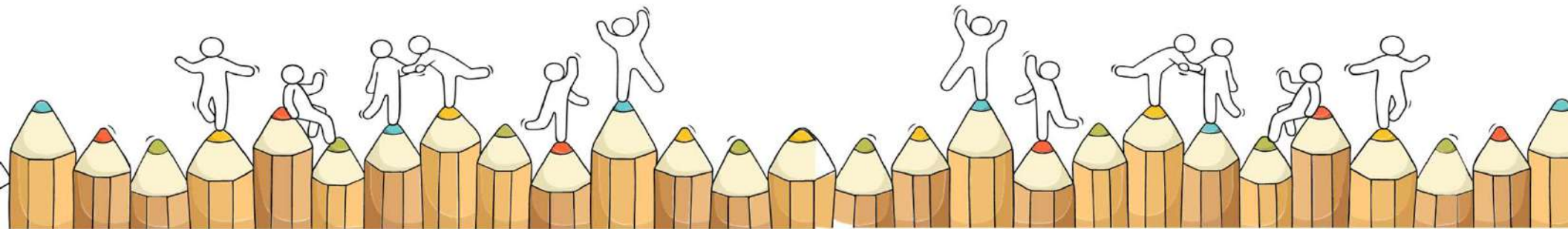
Application Details

To apply and find out more information about the ITE JIE, please scan the QR Code below:












Admission Exercises

Things to note



Application Timeline

Admissions Exercises	JIE 'N'			PFP	
	JIE 'E'			DPP	
	NFP				
	DPP				
	(1st window of applications)			(2nd window of applications)	
Application Period	Dec 2024			Jan 2025	

 N(T)-Level Student
 N(A)-Level Student



TAKE NOTE

Check that your personal particulars
(such as statutory names and Hanyu
Pinyin names) are printed

CORRECTLY

on your results slips



APPEAL FOR REVIEW OF RESULTS

- Please see [Ms Lim Lin Lin](#) for the relevant forms
- Outcome of the Individual Appeal is expected to be released to schools by **31 Jan 2025**
- Submission to office by Thursday, **18 Dec, 3 pm**
- Cost is **\$114.45** per subject
- Proceed only if you have very **STRONG** grounds for appeal



FORM N

Refer to ITE admission and course brochure for 3-year higher Nitec/2-year Nitec course codes or for DPP course codes

Course Code FPECE = (Electronics Engineering)

College Code CC-AM

2024 JOINT INTAKE EXERCISE (GCE 'N' LEVEL) FOR ITE COURSES FORM N

Based on your GCE 'N' level examination results, you are eligible to apply for [redacted] as listed below.

Joint Intake Exercise 'H' Full-time Higher Nitec Courses
(2-Year with 10 Weeks Preparatory Course) under Direct-Entry-Scheme to Polytechnic Programme (DPP)

Course	College	Course	College	Course	College	Course	College
FPACC	CC-AM	FPCHT	CE-SM	FPIAD	CE-SM	FPMCE	CW-CK
FPACC	CE-SM	FPCSE	CE-SM	FPIAD	CW-CK	FPMEC	CC-AM
FPACC	CW-CK	FPECE	CC-AM	FPIAG	CC-AM	FPMEC	CE-SM
FPBIS	CE-SM	FPECE	CE-SM	FPLSN	CC-AM	FPMEC	CW-CK
FPBNS	CC-AM	FPECE	CW-CK	FPLSN	CE-SM	FPNST	CC-AM
FPBNS	CE-SM	FPELE	CE-SM	FPLSN	CW-CK	FPNST	CE-SM
FPBNS	CW-CK	FPELE	CW-CK	FPLIT	CE-SM	FPNST	CW-CK
FPBSC	CW-CK	FPHPO	CW-CK	FPLTO	CW-CK		
FPBSE	CC-AM	FPIAD	CC-AM	FPMCE	CC-AM		

Joint Intake Exercise 'N'
Full-Time 3-year Higher Nitec and 2-year Nitec courses

Course	College	Course	College	Course	College	Course	College
HF3AC	CC-AM	HF3EC	CC-AM	HF3PS	CC-AM	NFATV	CW-CK
HF3AC	CE-SM	HF3EC	CE-SM	HF3PS	CE-SM	NFAT2*	CC-AM
HF3AC	CW-CK	HF3EC	CW-CK	HF3RB	CC-AM	NFBEM	CE-SM
HF3AI	CC-AM	HF3EV	CC-AM	HF3RB	CE-SM	NFBEM	CW-CK
HF3AI	CW-CK	HF3PS	CE-SM	HF3RB	CW-CK	NFBEV	CE-SM
HF3BA	CC-AM	HF3HS	CE-SM	HF3SI	CE-SM	NFDAN*	CC-AM
HF3BA	CE-SM	HF3IA	CC-AM	HF3SI	CW-CK	NFDPE	CC-AM
						NFDLI	CE-SM
						NFVZ*	CC-AM





NEXT STEP AFTER N-LEVELS

Tertiary Education

1. Enhanced Nitec Foundation Prog
2. 2-year Nitec / 3-Year Higher Nitec
3. Traineeship Prog (some courses)
4. Higher Nitec (DPP) – For 4NA only
5. NFP – For 4NA only



Diploma Polytechnic Foundation Programme

SINGAPORE POLYTECHNIC | **SP**

REPUBLIC POLYTECHNIC

NGEE ANN
POLYTECHNIC

NYP NANYANG
THE INNOVATIVE POLYTECHNIC

Temasek
POLYTECHNIC

Secondary Education

1. Secondary 5 (O-levels) for 4NA
2. Lateral Transfer to 4NA from 4NT



- Appeal-based
- Subject to MOE criteria and approval



PROGRESSION PATHWAYS FOR 4N (ACADEMIC)

No	Item	Eligibility Criteria	Remarks
1	Polytechnic Foundation Programme (PFP)	ELMAB3 ≤ 12 (Excl CCA pts) + course entry requirement	Apply when O-levels results are released in mid Jan 2025
2	Direct-Entry-Scheme to Poly Prog (DPP) – Higher NITEC	ELMAB3 ≤ 19 (Excl CCA pts) + course entry requirement	Application from 2.30 pm (Today) – 19 Dec 2024 (Thurs), 5 pm
3	Progression to ITE for 2-Year NITEC / 3-Year Higher Nitec courses	Prerequisites & bonus pts stated in booklet	Application from 2.30pm (Today) – 19 Dec 2024 (Thurs), 5 pm



PROGRESSION PATHWAYS FOR 4N (ACADEMIC)

No	Item	Eligibility Criteria	Remarks
4	Sec 5NA	ELMAB3 \leq 19 (Excl CCA pts) and at least a grade 5 for all subj used in the computation of ELMAB3	
5	NAFA Foundation Programme (NFP)	ELMAB3 \leq 15 (Excl CCA pts) Applicants who score 4 and above in English Language will be required to attend an interview.	Application from 16 Dec 2024 – 27 Dec 2024 Please apply DIRECTLY on NAFA Website



FOR ALL 4 NA STUDENTS:

4NA Only

Timeframe	Action to be taken
Submit by 19 Dec 2024, noon	Complete and submit the Google form which will be send to you to indicate your choice of pathway. You must report to school on 2 Jan 2025 even if you are applying for PFP.



ALL students MUST COMPLETE and submit the Google form

<https://forms.gle/1iASiWfDtM6nKRNA7>



PROGRESSION PATHWAYS FOR 4N (TECHNICAL)

No	Item	Criteria	Remarks
1	Progression to ITE for 2-Year NITEC & 3-Year Higher Nitec courses	Prerequisites & bonus pts stated in the booklet	Application from 2.30 pm (Today) – 19 Dec 2024 (Thurs), 5 pm
2	Enhanced Nitec Foundation Programme (eNFP) 1+2 =3yrs in ITE	0 or 1 N-level pass only	Application from 2.30 pm (Today) – 19 Dec 2024 (Thurs), 5 pm
3	Transfer to 4NA	<ul style="list-style-type: none">Grade A for both EL & MA andGrade B or better for 1 other sub	Subject to approval from MOE



ITE AGGREGATE POINTS

Computation of ITE Aggregate Points for Normal (Technical) Subjects

Normal (Technical) Grade	ITE Aggregate Points
A	1
B	2
C	3
D	4
E / U	5

Computation of ITE Aggregate Points for Normal (Academic) Subjects

Normal (Academic) Grade	ITE Aggregate Points
1, 2, 3	1
4	2
5	3
6 / U	4



MINIMUM ENTRY REQUIREMENTS

3-Year <i>Higher Nitec</i> Courses by School	Course Code	College Code	2023 JIE 'N' ITE Aggregate Point (based on 4 subjects)	Minimum Entry Requirements
BUSINESS & SERVICES				
Accounting (7)	HF3AC	CC-AM CE-SM CW-CK	3 5 5	3 GCE 'N' Passes (Grade A-D or Grade 1-5) in English Language and two other subjects Or 2 GCE 'O' Grades (Grade 1-8) in any two subjects
Business Administration (7) NEW	HF3BA	CC-AM CE-SM CW-CK	- - -	
Event Management (7) NEW	HF3EV	CC-AM	-	

Do look at the MER and 2023 ITE Aggregate when making your choices



BONUS POINTS

The table below provides details for the computation of bonus points available. Please note that these bonus points are not taken into account when considering whether applicants are eligible for courses. The bonus points will only come into effect when the applicant has been deemed eligible and is being considered for posting based on merit.

Types of Bonus Points	Number of Bonus Points Awarded
For applicants with the following CCA grades:	
a) Excellent or Grades of A1 - A2	2 points
b) Good or Grades of B3 - C6	1 point



WHEN MAKING YOUR CHOICES

12 choices

- First **3 to 4** choices
- Next **3 to 4** choices
- Remaining choices

PASSION

Practical

Prudent

OFFICAL (CLOSED) \ NON-SENSITIVE

Key Dates for Jan 2025 Intake Exercise

Key Activity	Period for 2-Year and 3-Year Nitec Courses, and 3-Year and 4-year Higher Nitec courses	Remarks
1st Phase (Main Phase)		
Application	16 Dec 2024 (2.30pm) to 19 Dec 2024 (5pm) Notification for interviews to be released on 20 Dec	Apply through the Internet at https://www.ite.edu.sg with NRIC / FIN and Date of Birth. You may also apply using SingPass.
Release of Results	30 Dec 2024 at 9am	Check results at https://istudent.ite.edu.sg with web ID and password
Acceptance of Course Offer Period	30 Dec 2024 to 3 Jan 2025	Accept course offer at https://istudent.ite.edu.sg with web ID and password
2nd Phase (Late Application/Appeal Phase)		
Application	30 Dec 2024 to 3 Jan 2025	Apply through the Internet at https://istudent.ite.edu.sg with NRIC / FIN and Date of Birth. You may also apply using SingPass.
Release of Results	10 Jan 2025 at 9am	Check results at https://istudent.ite.edu.sg with web ID and password
Acceptance of Course Offer Period	10 Jan 2025 to 12 Jan 2025	Accept course offer at https://istudent.ite.edu.sg with web ID and password
3rd Phase (Final Top-up Phase)		
Application	1 st Top-up Phase Application - 10 Jan to 17 Jan 2025 2 nd Top-up Phase Application - 23 Jan to 7 Feb 2025	Apply through the Internet at https://istudent.ite.edu.sg with NRIC / FIN and Date of Birth. You may also apply using SingPass.
Release of Results	1 st Top-up Phase - 14 Jan to 23 Jan 2025 2 nd Top-up Phase - 23 Jan to 13 Feb 2025	Check results at https://istudent.ite.edu.sg with web ID and password
Acceptance of Course Offer Period	1 st Top-up Phase - 14 Jan to 23 Jan 2025 2 nd Top-up Phase - 23 Jan to 13 Feb 2025	Accept course offer at https://istudent.ite.edu.sg with web ID and password
Jan 2025 Intake Term Commencement Date: <u>13 Jan 2025</u>		

Key Pointers for Students on ITE's Joint Intake Exercise (JIE)

ALL students in N(T) and N(A) students (who are not progressing to 5N(A) or repeating 4N(A)) are eligible for JIE. Those who were unsuccessful in EAE are also eligible for JIE.

Participation in JIE Main Phase is key to securing a place in ITE!

Use all **12 JIE choices wisely**, as competition for 3-year Higher Nitec courses is keen!

Do consult your teachers / ECG counsellors to help you make your choices!

Do use the Last Aggregate Score (LAS) published in ITE's admission portal to help you make your course choices.

If you have received an additional letter, then you are eligible for the Enhanced Foundation Programme (EFP).

If you are eligible for EFP, make sure you apply for **both** the EFP and the 2-year Nitec/3-year Higher Nitec!

The EFP helps to build the necessary literacy and numeracy foundations that will enable you to successfully complete your course!

If you are counter-offered a course, accept it first before appealing for another course you may be more interested in!

STEP-BY-STEP INFORMATION FOR JIE APPLICATION


Online Application for


2-Year Nitec and 3-Year Higher Nitec Courses

3-Year Nitec/4-year Higher Nitec Course with EFP
(for N(T) students with 0, 1 "N" pass)

1. Go to <https://www.ite.edu.sg>.

2. Click  icon.

3. Under JIE 'N', click  icon to link to the application website

Under JIE 'E', click  icon to link to the application website

4. At the application website:

- a) Enter NRIC / FIN and Date of Birth to start application. You may also apply using SingPass.
- b) Upon completion of application, applicants will receive their **web ID** and password.

*Students who are eligible for the 3-Year Nitec/4-Year Higher Nitec Course with EFP are encouraged to go through **both** JIE 'E' and JIE 'N' e-application process

STEP-BY-STEP INFORMATION FOR JIE APPLICATION

Checking of Posting Results/Accept Course Offer

2-Year Nitec and 3-Year Higher
Nitec Courses

3-Year Nitec/4-year Higher Nitec
Course with EFP
(for N(T) students with 0, 1 “N” pass)

1. Go to <https://istudent.ite.edu.sg>.
2. Enter **web ID** and password.
3. Click **‘Self-Service’** followed by **‘Student Admission’** followed by **‘View Application Results’** to view the application results and to accept course offer.

The above steps applies to all phases (refer to [Slide 34](#) for dates).
For more details, please refer to ITE website.



If you've already accepted your EAE offer, you will NOT be eligible for JIE.

Do note that your results MUST meet the Minimum Entry Requirements of the course.



AVAILABILITY OF PCS IN SCHOOL WITH INTERNET ACCESS & PRINTERS FOR JOINT INTAKE EXERCISE (JIE) REGISTRATION

Venue: General Office

Attire: School Uniform

Dates: 17th, 18th & 19th Dec (9am to 4pm)



ITE SCHOLARSHIPS, AWARDS & BURSARIES



Scholarships, Awards & Bursaries

Scholarships



Ask Jamie @ ITE

[Home](#) > [Admissions](#) > [Scholarships, Awards & Bursaries](#) > [Scholarships](#)

Certification System

Assessments ▾

 Academic Calendar

Full-time Courses ▾

SCHOLARSHIPS

At ITE, we have a wide-range of scholarships and sponsorship awards offered by external organisations and companies for our students. Deserving students will be awarded the scholarships or sponsorships based on academic merit, good track records in co-curricular activities, leadership qualities and special talents. Students should apply for these scholarships and sponsorships at the respective ITE Colleges upon admission to the course (if applicable). The list of scholarships and sponsorships offered for ITE full-time courses are given below.



ITE Progression Award

ITE Progression Award (IPA)



- On graduation from ITE, those who wish to pursue a diploma may be eligible for the IPA.
- Top-up of \$5000 to Post-Secondary Education Account upon enrolment in eligible diploma
- Top-up of \$10,000 to CPF Ordinary Account upon completion of diploma.
- Learn more from <https://go.gov.sg/ite-progressionaward>



<https://go.gov.sg/ite-progressionaward>

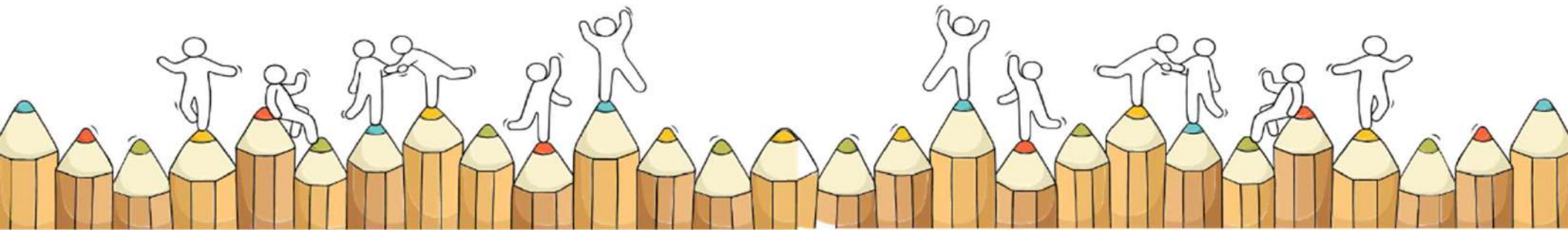
CONFIDENTIAL



PFP Study Award / Scholarships

	Application	Eligibility
TP	By invitation after N Levels	Outstanding EMB3 at the GCE N-Level Exams & Excellent CCA records Good character and conduct
NYP		ELMAB3 of ≤ 7 points & Excellent CCA records
NP		Good N Level Results & Leadership Qualities
SP		Outstanding ELMAB3 & Excellent CCA records
RP	Before N Levels	Prelim Results ELMAB3 ≤ 10 & Excellent CCA Grade Get a conditional offer before N Levels

For Students Considering Private Education



The 3Rs when deciding on Private Education

Reasons

- Why are you furthering your studies?
- What are the job prospects for your preferred course?

Readiness

- How ready are you to further your studies?
- Can you cope with the academic rigour and assignment deadlines?
- Can you fund your studies?

Risks

- Do you know the possible drawbacks?
 - Your expected returns may not exceed the investments you put into your private education.
 - Private schools may make exaggerated claims.
 - Private schools may close due to various reasons.
 - You may not get a full refund if you withdraw from your course.

<https://go.gov.sg/3rs>



8 Things You Should Know Before You Enrol in A Private School



School Registration

Ensure the school is registered with SkillsFuture Singapore (SSG). Review the school's registration period, expiry date and its overall registration track record.



Partner Institution

Research on the partner institution conferring the diploma or degree, and whether the qualification is recognised by the industry.

EduTrust Certification Scheme

Is the school EduTrust-certified*? Under the scheme, private schools are assessed for their performance in areas such as school management and provision of student support services.



*Schools are required to obtain EduTrust certification in order to offer external degree programmes

School Premises

Head down to the campus ground to check the facilities and support services. Observe the study environment too.



Fee Protection



Ask if there is any course fee protection so that you will be able to recover unconsumed course fees should the school close down.

Beyond Course fees



Find out about the course syllabus and materials, graduation rates and employment prospects. Approach the alumni to find out what they think of the school.

Teachers

Check if the teachers are qualified to teach the course.



Internship

If industry attachment is included, find out which organisation you will be attached to, the period of attachment and the alternative arrangement should the attachment become unavailable. Verify the information with the organisation as well.





Presentation slides will be
uploaded on the school
webpage after today



We wish
you all the
Best.

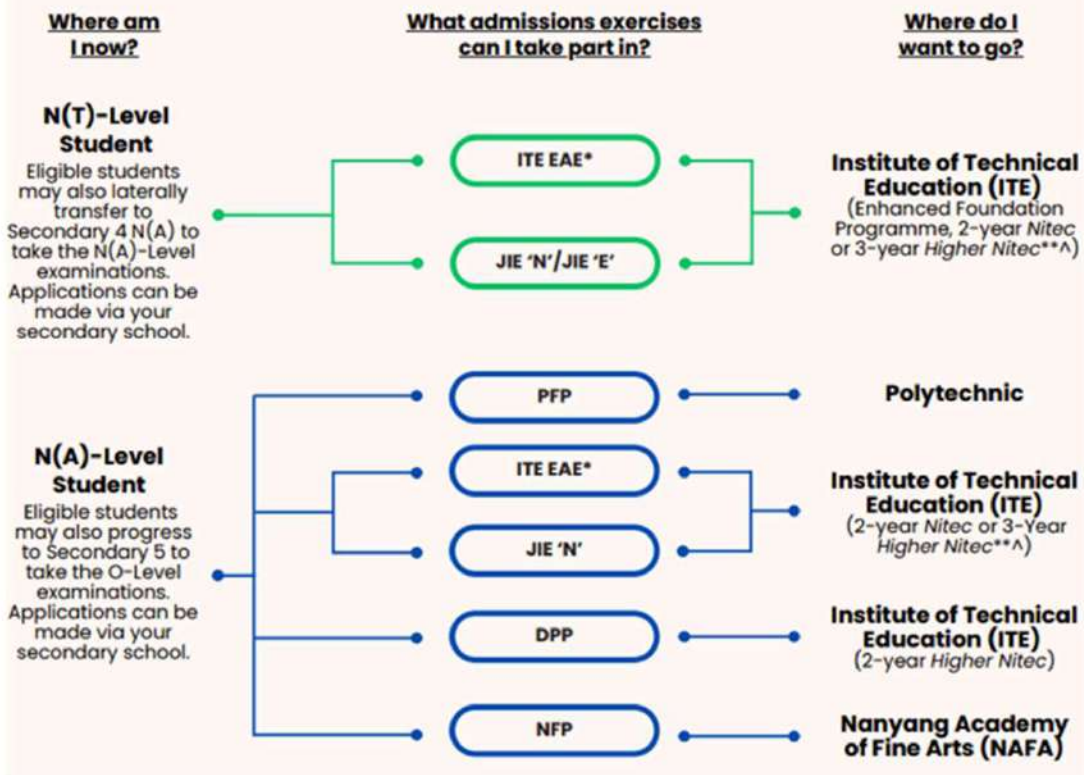




Ministry of Education
SINGAPORE



Post-Secondary Admissions Exercises for N-Level Students



<https://www.moe.gov.sg/post-secondary/admissions>

For more information on applying to these courses, you can visit <https://www.moe.gov.sg/post-secondary/admissions>

For the list of 3-year Higher Nitec courses, please visit <https://www.ite.edu.sg/courses/full-time-courses/nitec-and-3-year-higher-nitec>

Source: A Guide to Post-Secondary Admissions Exercises

Details of Admissions Exercises



JIE 'N'/JIE 'E' – Joint Intake Exercise

The JIE 'N' is for 2-year *Nitec* or 3-year *Higher Nitec* courses offered by ITE. The JIE 'E' is for GCE N(T) students to apply for the 3-year *Nitec* course with Enhanced *Nitec* Foundation Programme.

JIE 'N'/JIE 'E': go.gov.sg/applyjie



..... N(T)–Level Student



..... N(A)–Level Student

Details of Admissions Exercises



PFP – Polytechnic Foundation Programme

PFP is a one-year programme that offers a practice-oriented curriculum taught by polytechnic lecturers to better prepare polytechnic-bound Secondary 4 N(A) students for entry into selected polytechnic diploma courses. PFP students are given provisional places in diploma programmes, subject to them passing all modules in the one-year programme.

PFP: go.gov.sg/pfp



DPP – Direct-Entry-Scheme to Polytechnic Programme

DPP allows Secondary 4N(A) students to be admitted directly into selected 2-year *Higher Nitec* programmes at ITE without having to sit for the O-Level examinations or undergo a *Nitec* programme. DPP students who successfully complete their *Higher Nitec* courses at ITE and attain the required qualifying Grade Point Average (GPA) scores are guaranteed a place in a polytechnic diploma course mapped to their *Higher Nitec* course.

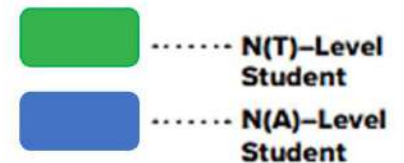
DPP: go.gov.sg/applydpp



NFP – NAFA Foundation Programme

NFP is a one-year practice-based programme that prepares N(A) Level holders to pursue a diploma in the creative arts. NFP students who successfully complete the programme will be offered a place in their chosen diploma course at NAFA.

NFP: go.gov.sg/applynafafp





TAKE NOTE

Please **register by 19 Dec** and **check your email/portal from 20 Dec onwards** for information on interviews



PAYA LEBAR METHODIST GIRLS' SCHOOL (SECONDARY)

Release of RESULTS 2024 GCE N-Level examinations

Results details removed



All the Best as you move on in the next phase of your education journey...



God Bless You !



BREAKOUT ECG INFO SESSIONS

Time and Location	Grouping	Teacher IC
3.15 pm – 4 pm (Shaw Hall back)	Group A <ul style="list-style-type: none">For students who require more support in ITE course selection and application	Ms Priscilla Chong
3.15 pm – 4 pm (Stage)	Group B <ul style="list-style-type: none">Briefing on PFP, DPP, 3-year Higher Nitec and Sec 5 pathways (students taking mainly G2/NA subjects)	Mr Tan Tiah Hui



BREAKOUT ECG INFO SESSIONS

Stage

Group B:

Briefing on PFP, DPP and Sec 5 pathways
(students taking mainly G2/NA subjects)

Group A:

For students who require more
support in ITE course selection
and application

TV projection