



PAYA LEBAR METHODIST GIRLS' SCHOOL (SECONDARY)



Subject Option 2027 Student Briefing

April/ May/Oct



Overview of Post-Secondary Pathways

From 2028,
more post-secondary options
will be available.

Students taking at least	POST-SEC PATHWAYS					
	ITE Year 1 Entry	ITE Year 2 Entry	Polytechnic Foundation Programme (PFP)	Polytechnic Year 1	Millennia Institute	Junior College
6 G3 subjects	✓	✓	NEW ✓	✓	✓	✓
5 G3 subjects	✓	✓	NEW ✓	✓	✓	NEW ✓
4 G3 + 1 G2 subjects	✓	✓	NEW ✓	NEW ✓		
5 G2 subjects	✓	✓	✓			
4 G1 subjects	✓	NEW* ✓				

*For students who meet ITE's Year 1 academic requirements



Revised subject requirements for JC admission from 2028



L1R5 → L1R4
≤ 20 → ≤ 16

Component	Subjects	Current L1R5	From 2028 L1R4
L1	English or higher mother tongue language	✓	✓
R1	Any 1 best-scoring subject from Humanities	✓	✓
R2	Any 1 best-scoring subject from Mathematics or Science	✓	✓
R3	Any 1 best-scoring subject from Humanities, Mathematics or Science	✓	✓
R4	Any 1 best-scoring subject	✓	✓
R5	Any 1 best-scoring subject	✓	—
Qualifying threshold for JC eligibility		20	16



Bonus Point System

The cap on bonus points for JC admission will be lowered from a **maximum of 4 to 3 points** to account for the reduction in the number of subjects included in the L1R4 aggregate computation.

The bonus points cap for admission to MI will also be aligned with that for JC admissions.

Type of Bonus Points	Points
CCA Grade	Excellent: 2
	Good: 1
EL and HMTL Grade ◦ A1 to C6 for both subjects	2
Chinese/Malay (Special Programme) or Bahasa Indonesia Grade ◦ A1 to C6	2
Affiliated JC	2

Now

MAXIMUM OF **4** from any combination

2028 JAE

MAXIMUM OF **3** from any combination

PLMGS(Sec) is affiliated to ACJC



PL-Lites must put **ACJC** as their :

- 1st choice or
 - 1st and 2nd choice,
- e.g.
ACJC 1st choice – Science
ACJC 2nd choice – Arts





What's next?

Secondary 1 & 2

End of Secondary 2

Secondary 3 & 4

Deciding on upper secondary subject combinations

All students will offer between 5 and 8 examinable subjects for upper secondary.

Upper secondary

Students will continue to have flexibility to offer subjects at different subject levels, including elective subjects (e.g. Additional Mathematics, POA, NFS).



Offering Subjects at More Demanding Level (MDL) in Upper Secondary

- Students may offer subjects at MDL in Secondary 3 based on school's holistic considerations, which include students' subject-specific performance and their ability to cope with all subjects.
- For Humanities, students must **first offer the compulsory Humanities (i.e. SS + Elective Hum)** at either G2 or G3 level, depending on their current placement. Depending on students' readiness and ability, students may also opt to take a second Humanities subject from a different discipline. (note: school can only offer Pure Literature and Pure Geography at G3 in 2027).



Progression to Secondary 3

At the end of Secondary 2...

Students who do not meet the following academic requirements **are to re-calibrate curricular load**:

- (a) Pass EL and 2 subjects, or
- (b) Pass at least half the total no. of examinable subjects offered.



Progression to Secondary 3

Calibrate Curricular Load ...



At the end of Sec 2	Outcomes
<ul style="list-style-type: none">Students who <u>do not meet</u> the academic requirement	<p><u>Scenario 1</u></p> <ul style="list-style-type: none">Reducing number of Upper Secondary subjects (subjected to minimum subject policy – 5 Subjects) and/or
	<p><u>Scenario 2</u></p> <ul style="list-style-type: none">Offering subjects at Less Demanding Level (G3 to G2 or G2 to G1) – case by case



Progression to Secondary 3

Calibrate Curricular Load ...



Scenario 3	
<ul style="list-style-type: none">• Obtained 75% or better for Overall (at End-of-Year) for core subjects• Teacher's Recommendation	<p>Offer EL, MTL, Math, Sci & Humanities at More Demanding Level (MDL)</p> <ul style="list-style-type: none">• G2 to G3• G1 to G2 – for relevant subjects

Scenario 4	
<ul style="list-style-type: none">• Students offering <u>most or all</u> core subjects at MDL• Teacher's Recommendation	<p>Elective subjects (e.g. A Math, POA, 2nd Hum, Art, Music, NFS etc.) may be offered at More Demanding Level (MDL) as well</p>



How Subject Options are derived

Combinations are reviewed annually and modified based on

- **Available Staff or Physical Resources**
- **Requirements for Post-Sec Courses**
- **Observations and discussions on the strengths, aptitudes & aspirations of students**
- **National Examination performance of previous batches**

Lower Secondary Subject Offerings (with corresponding Upper Secondary Offerings) (PLMGS(Sec))

Dw`l lm` a kd rt a idbsr 'Kn v dq Rdb(Dw`l lm` a kd rt a idbsr 'T o o dq Rdb(E0	E1	E2
English	English	√	√	√
Mother Tongue (CL, ML, TL)	Mother Tongue (CL, ML, TL)	√	√	√
Higher Mother Tongue (HCL, HML, HTL))'Enqsgnrd v gn pt `kex(Higher Mother Tongue (HCL, HML, HTL)			√
Science	Science 'Bgdl .Ogx(+Bgdl .Ah(√	√	√
	Pure Science (Chem, Bio, Physics)			√
Mathematics	Mathematics	√	√	√
	A Maths		√	√
	Principles of Accounts		√	√
History	History		√	√
Geography	Geography		√	√
Literature in English	Literature in English		√	√
	Combined Humanities 'RR. F dn+RR. Glrs+RR. Kls(√	√
Food and Consumer Education	Nutrition and Food Science		√	√
Art	Art			√
Design & Technology				
	Music (O level music)			√
Mn m, dw`l lm` a kd rt a idbsr 'Kn v dq Rdb(Mn m, dw`l lm` a kd rt a idbsr 'T o o dq Rdb(E0	E1	E2
Music				
Physical Education	Physical Education	√	√	√
Character and Citizenship Education	Character and Citizenship Education	√	√	√
Social Studies (G1 Humanities) (for G1 Only)	Humanities Exposure Modules (HEM for G1)	√		



Subject Option Allocation Principles

Merit

- Overall Subject Percentage at Sec 2 and Subject Eligibility Criteria

Choice

- Rank order – 1st Choice will be considered if the results meet the subject criteria

Vacancy

- Availability of places in a particular subject option

Subjects offered depends on:

- Take-up rate – a subject will not be offered if the take-up rate is not met
- Availability of teachers – a subject will have a maximum class-size if too many students opt for it.



2027 Sec 3 Subject Options

– students taking all subjects at G3



	Subject
Compulsory Subject 1	English, G3
Compulsory Subject 2	Mother Tongue, G3
Compulsory Subject 3	Mathematics, G3
Compulsory Subject 4 (Humanities)	SS/Geography, G3
	SS/History, G3
	*SS/Literature, G3
Subject Cluster 1 (Sciences)	Pure Chemistry, Physics and Biology, G3
	Pure Chemistry and Pure Biology, G3
	Pure Chemistry and Pure Physics, G3
	C. Science (Chemistry/Biology), G3
	C. Science (Chemistry/Physics), G3
Subject Cluster 2 (Maths, Others)	Additional Maths and POA, G3 (for students opting for C. Science only)
	Additional Maths, G3
	POA, G3
	NFS, G3
Subject Cluster 3 (Aesthetics and Humanities)	Pure Geography, G3
	*Pure Literature, G3
	~Art, G3
	~Music, G3
	Not Taking

Rank order your
Subject Choices

*Subjected to availability of staff resource. At maximum the school can offer 1 Pure Literature and 1 SS/Literature, G3 class. If additional teacher resource is available, we may extend to 2 SS/Literature G3 across all the classes.

~Students cannot offer both Art/Music and Nutrition and Food Science together.



Subject Criteria (G3 Subjects)



Subjects	S2 G3 (Academic Performance) Criteria	
Pure Sciences~ (Biology and Chemistry or Physics and Chemistry)	S2 G3 English AND Science (Overall)	65% (B3) or better for both subjects
Additional Mathematics^	S2 G3 English AND Mathematics (Overall)	65% (B3) or better for both subjects
Pure Humanities^ (Literature in English, Geography)	S2 G3 English AND Lit/Geog (Overall)	65% (B3) or better for both subjects
Art/Music (at G3)	S2 Art, Selection Test/Audition AND Interview Music Selection Test/Audition AND Interview	Art - 65% (B3) or better Music - music theoretical knowledge and formal training in primary instrument

~ Eligible students who intends to take double Pure Sciences

^ Eligible students who intends to take the relevant G3 subjects

Note that: all options are subjected to **minimum** of **15** students and **maximum** of **40** students class size per subject. And offering of the **Pure Literature** subject is subjected to the availability of manpower resources for the year.



Sec 3 Subject Options

– students taking all subjects at G2 or subjects at G2/G3



	Subject^
Compulsory Subject 1	English, G3
	English, G2
Compulsory Subject 2	Mother Tongue, G3
	Mother Tongue, G2
Compulsory Subject 3	Mathematics, G3
	Mathematics, G2
Compulsory Subject 4 (Humanities)	SS/Geography, G3
	SS/Geography, G2
	SS/Literature, G3
	SS/Literature, G2
	SS/History, G3
	SS/History, G2
Compulsory Subject 5 (Sciences)	C. Science (Chemistry/Biology), G3
	C. Science (Chemistry/Biology), G2
	C. Science (Chemistry/Physics), G3
	C. Science (Chemistry/Physics), G2
Subject Cluster 1 (Aesthetics, Science and Humanities)	Additional Maths, G2
	NFS, G2
	POA, G2
	Not Taking

Criteria to offer subject at a more demanding level (G3) in Secondary 3	
Current students taking the subject at G3	Obtained a Pass grade for the subject for Overall (at End-of-Year)
Other students	<ul style="list-style-type: none"> Obtained 75% or better for Overall (at End-of-Year) Teacher's Recommendation



Subject Criteria (G2 Subjects)

Subjects	S2 G3/G2 (Academic Performance) Criteria	
Additional Mathematics, G2	S2 G2 English AND G3 Mathematics (Overall) or	EL - 65% (Grade 3) or better Maths - 60% (B3) or better
	S2 G2 English AND Mathematics (Overall)	65% (Grade 3) or better
Art/Music (at G3)	S2 Art, Selection Test/Audition AND Interview Music Selection Test/Audition AND Interview	Art - 65% (B3) or better Music - music theoretical knowledge and formal training in primary instrument

Note that: all options are subjected to **minimum** of **15** students and **maximum** of **40** students class size per subject. And offering of the **Elective Humanities** subject is subjected to the availability of manpower resources for the year.



2026 Sec 3 Subject Option

– students taking at least one subject at G1



	Subject
Compulsory Subject 1	English, G2
	English, G1
Compulsory Subject 2	Mother Tongue, G2
	Mother Tongue, G1
Compulsory Subject 3	Mathematics, G3
	Mathematics, G2
	Mathematics, G1
Compulsory Subject 4	Elements of Business Studies, G1
Subject Cluster 1 (Humanities – non-examinable)	Humanities Elective Module, G1
Subject Cluster 2 (Sciences)	Science, G1
	C. Science (Chemistry/Biology), G2
	C. Science (Chemistry/Physics), G2
NFTE Programme (Non-examinable)	

Rank order your Subject Choices



Criteria to offer subject at a more demanding level (G2) in Secondary 3	
Current students taking the subject at G2	Obtained a Pass grade for the subject for Overall (at End-of-Year)
Other students	<ul style="list-style-type: none"> Obtained 75% or better for Overall (at End-of-Year) Teacher's Recommendation

Scenario Learning 1 – student taking all subjects at G3



EXAMINABLE SUBJ AT S2				S2 PERFORMANCE	INTEREST	ASPIRATIONS
EL	G3	HIST	G3	<ul style="list-style-type: none"> Met academic requirement Scored above 75% for EL, SCI and GEOG 	<ul style="list-style-type: none"> Intends to invest more time to pursue non-academic interests (i.e. she will be serving on the EXCO in CCA) and expressed desire to explore sizing her curricular load (e.g., offering an elective at G2) Has enjoyed Sciences, History and Mathematics lessons and is considering which related subjects to offer at US while weighing his overall curricular load 	<ul style="list-style-type: none"> Aspires to go to JC/MI to offer mainly Humanities and Arts subjects or to study Business or Psychology in a Polytechnic
MA	G3	LIT	G3			
MTL	G3	ART	CMN			
SCI	G3	D&T	CMN			
GEO	G3	FCE	CMN			

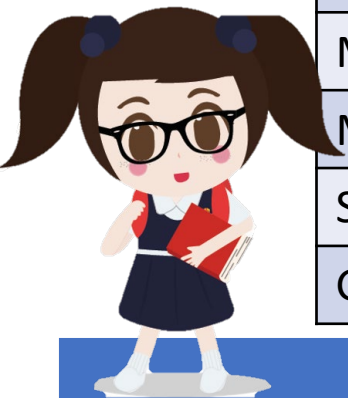
Possible Subject Option

	Offering 6 subject option		Offering 7 subject option	
Compulsory sub 1	EL	G3	EL	G3
Compulsory sub 2	MTL	G3	MTL	G3
Compulsory sub 3	MA	G3	MA	G3
Sub cluster 1	1. SS/Geog , 2. SS/Hist, 3. SS/Lit	G3	1. SS/Hist , 2. SS/Geog, 3. SS/Lit	G3
Sub cluster 2	1. P. CH P. BI , 2. P. CH P. PH, 3. C. CH/BI, 4. C. CH/PH	G3	1. P. CH P. BI , 2. P. CH P. PH, 3. C. CH/BI, 4. C. CH/PH	G3
Sub cluster 3	NIL		Add MA	G3
Sub cluster 4 & 5	NIL		NIL (or P. Lit as 8 th subject?)	

Post-Sec Options

- JC / MI
- Poly Year 1
- PFP

Scenario Learning 2 – student taking subjects at G2 or G3



EXAMINABLE SUBJ AT S2				S2 PERFORMANCE	INTEREST	ASPIRATIONS
EL	G2	HIST	G2	<ul style="list-style-type: none"> Met academic Requirement Scored slightly above 50% for Sci and Lit, G3 Scored above 65% for MA and GEOG 	<ul style="list-style-type: none"> Enjoys learning about physical landforms in Geography Lessons Likes to read books (English and MTL) Loves to solve mathematical problem and seeks out different methods of number analysis 	<ul style="list-style-type: none"> 'I don't know what I want yet' Uncertain about her post-sec options
MA	G2	LIT	G3			
MTL	G3	ART	CMN			
SCI	G3	D&T	CMN			
GEO	G2	FCE	CMN			

Possible Subject Options

	Offering 5 subject option		Offering 6 subject option	
Compulsory sub 1	EL	G2	EL	G2
Compulsory sub 2	1. MTL	G3	1. MTL	G3
	2. MTL	G2	2. MTL	G2
Compulsory sub 3	MA	G2	MA	G2
Sub cluster 1	1. SS/Geog , 2. SS/Lit	G2	1. SS/Geog , 2. SS/Lit	G2
	3. SS/Lit	G3	3. SS/Lit	G3
Sub cluster 2	1. C. CH/BI , 3. C. CH/PH	G2	1. C. CH/BI , 3. C. CH/PH	G3
	2. C. CH/BI, 4. C. CH/PH	G3	2. C. CH/BI, 4. C. CH/PH	G2
Sub cluster 3	NIL		1. A MA , 2. P. Geog, 3. POA, 4. NFS	G2

Post-Sec Options
1. PFP
2. Higher Nitec (3 yr)
3. Higher Nitec (2 yr)

Scenario Learning 3 – student taking at least 1 subject at G1



EXAMINABLE SUBJ AT S2				S2 PERFORMANCE	INTEREST	ASPIRATIONS
EL	G2	HUM	G1	<ul style="list-style-type: none"> Met academic requirements Did well in MTL (>75%), eligible to offer MTL at G2 Failed Science 	<ul style="list-style-type: none"> Likes to read books (English and MTL) Loves to solve mathematical problem and able to interact well with younger kids 	<ul style="list-style-type: none"> Aspires to work with younger children in early childhood education or hospitality operations
MA	G2	ART	CMN			
MTL	G1	D&T	CMN			
SCI	G1	FCE	CMN			

Possible Subject Option

Offering 6 subject option		
Compulsory sub 1	1. EL	G2
	2. EL	G1
Compulsory sub 2	1. MTL	G2
	2. MTL	G1
Compulsory sub 3	1. MA	G2
	2. MA	G1
Compulsory sub 4	EBS	G1
Sub cluster 1	SS/HEM	G1
Sub cluster 2	Sci	G1

Post-Sec Options

- Higher Nitec (3 yr)
- Higher Nitec (2 yr)



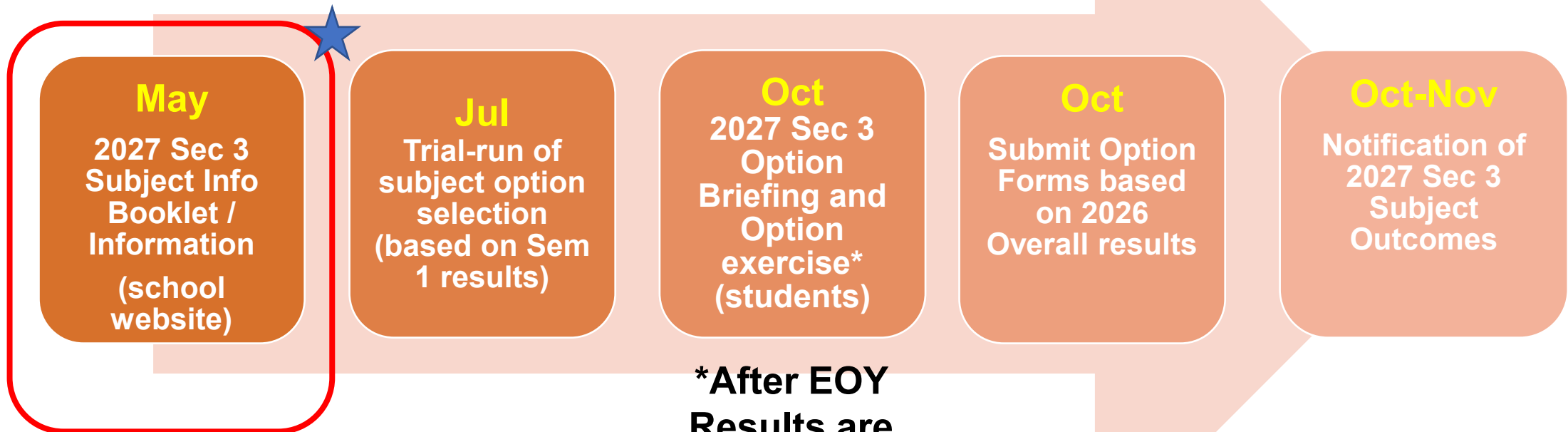
Subject classes

Points to note:

- There must be 15 or more students choosing this particular option before the school will consider opening the class.
- Student cannot be a school and private candidate at the same time. Therefore, student cannot sit for any subject at the national examinations as a private candidate.



Timeline @ a Glance



***After EOY
Results are
released**



Subject Option Online Portal (Actual)

You will be receiving an email via your plmgss email account

Subject: Subject Combination and Option Exercise

Dear <Name>, <Class>

The following details are your information for the Secondary 3 2024 subject combination and option exercise:

URL link: <https://plmgs.schoolhub.sg/>
Username: <XXXXXX>
Password: <XXXX>

Please complete the trial option by XX XXX XX (8 am).

Thank you.

PL Admin



PAYA LEBAR METHODIST GIRLS' SCHOOL (SECONDARY)



Subject Option Online Portal

<https://plmgs.schoolhub.sg/>

The screenshot shows a web browser window displaying the Subject Option Online Portal. The page has a blue header with a 'Log in' link. Below the header is a 'Home' tab. The main content area is divided into two columns. The left column contains a 'User login' form with fields for 'Username *' and 'Password *', a 'Log in' button, and a 'Reset your password' link. A callout box points to the login form with the text 'Enter username and password and Click Login'. The right column contains an 'Announcement' section with the text: 'Submitted by admin on Sun, 13-Oct-2024 - 11:00. This is a Subject Combination Exercise for Secondary Two students going on to Secondary Three in 2025. Subject Combinations based on their interest, ability and aptitude.' Below the announcement is a table with the following data:

Registration Period	19 Oct (Sat) 9am to 23 Oct (Wed) 11 pm
Check Allocation	11 Nov (Mon) 9am
Appeal Period	12 Nov (Tue) 9am to 15 Nov (Fri) 11 pm
Check Appeal	21 Nov (Thu) 9am

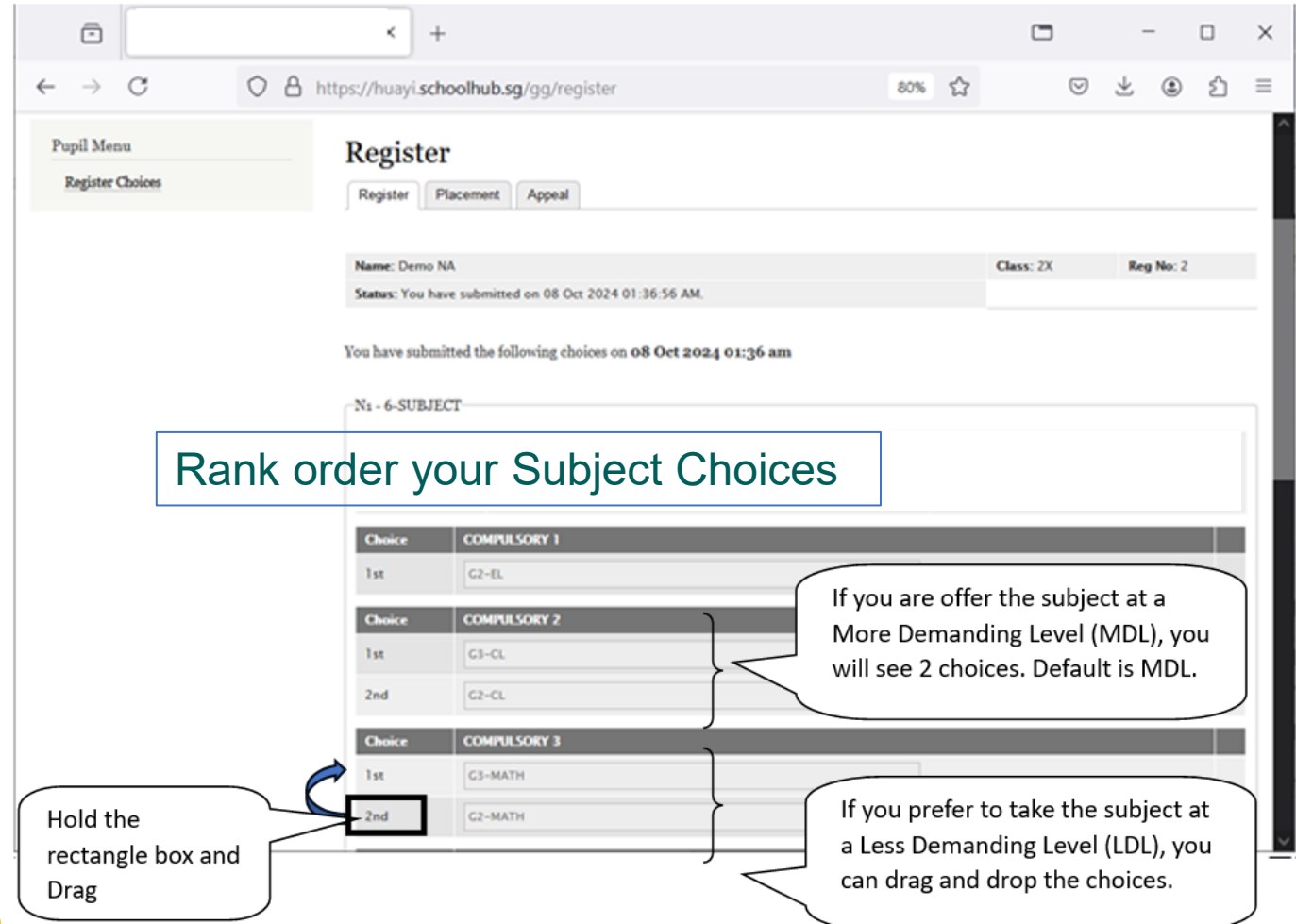
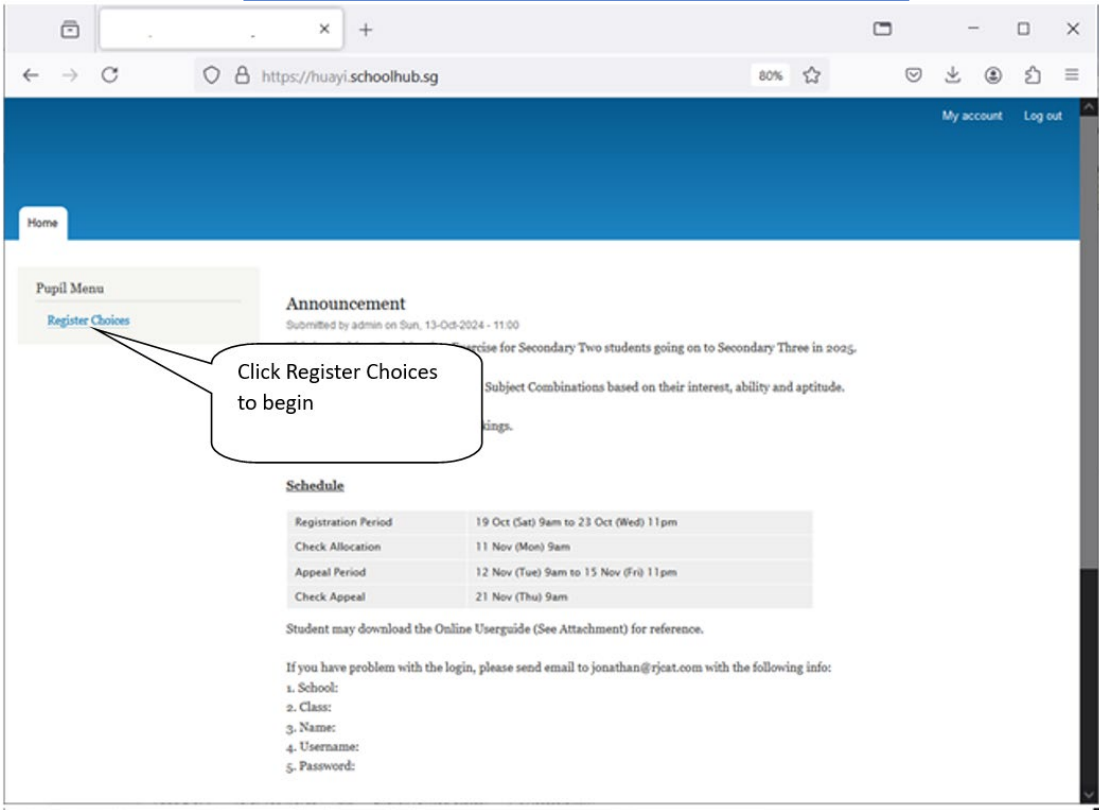
Below the table, it states: 'Student may download the Online Userguide (See Attachment) for reference.' At the bottom, it provides contact information: 'If you have problem with the login, please send email to jonathan@rjcat.com with the following info: 1. School: 2. Class: 3. Name: 4. Username: 5. Password:'

Official (Open) / Non-Sensitive



Subject Option Online Portal

Register Choices





Subject Option Online Portal

Sample Confirmation Slip (for your reference)

Register

Name: Demo NA Class: 2X Reg No: 2

Status: You have submitted on 08 Oct 2024 01:36 AM.

You have submitted the following choices on 08 Oct 2024 01:36 am

N1 - 6-SUBJECT	
Choice	COMPULSORY 1
1st	G2-EL
Choice	COMPULSORY 2
1st	G3-CL
2nd	G2-CL
Choice	COMPULSORY 3
1st	G2-MATH
2nd	G3-MATH

Only subjects that you are eligible for will display for your rank order.

You prefer to offer G2-MATH.
G2-MATH is 1st
G3-MATH is 2nd

Subject Combination for Secondary Three Confirmation Slip

Name: Demo NA

Class: 2X (

You have submitted on 13 Oct 2024 11:25:52 AM.

Choice No 1: N1 - 6-SUBJECT

COMPULSORY 1	1st: G2-EL
COMPULSORY 2	1st: G3-CL 2nd: G2-CL
COMPULSORY 3	1st: G2-MATH 2nd: G3-MATH
CLUSTER 1	1st: G2-SS+GEOG 2nd: G2-SS+HIST
CLUSTER 2	3rd: G2-SS+LIT(E) 1st: G2-SCI(PHY,CHEM) 2nd: G2-SCI(CHEM,BIO)
CLUSTER 3	1st: G2-ADDITIONAL MATHS 2nd: G2-POA 3rd: G2-NFS 4th: Not taking



Timeline of activities



Activity	Dates
S2 MTP – Engagement on ECG and Subject Option	15 May
Subject Option Trial Exercise (based on Sem 1 results)	10-13 Jul
Subject Option Admin and ECG Briefing	14 Oct
Subject requirement briefing (during subject lesson time)	14 – 16 Oct
Subject Option Exercise:	
Start	20 Oct (12 noon)
End	22 Oct (8 am)*
Release of Subject Option Allocation	3 Nov (12 noon)
Appeal period	3 – 5 Nov
Release of appeal results	12 Nov
Release of Class Teaching Group	When school re-opens via ICON email

*Do note that students who did not submit the option online by the deadline will be assigned to any available option after all the allocation for all students is completed.



PAYA LEBAR METHODIST GIRLS' SCHOOL (SECONDARY)



Which are my interests and strengths/abilities?

What are the available pathways for me?

ECG

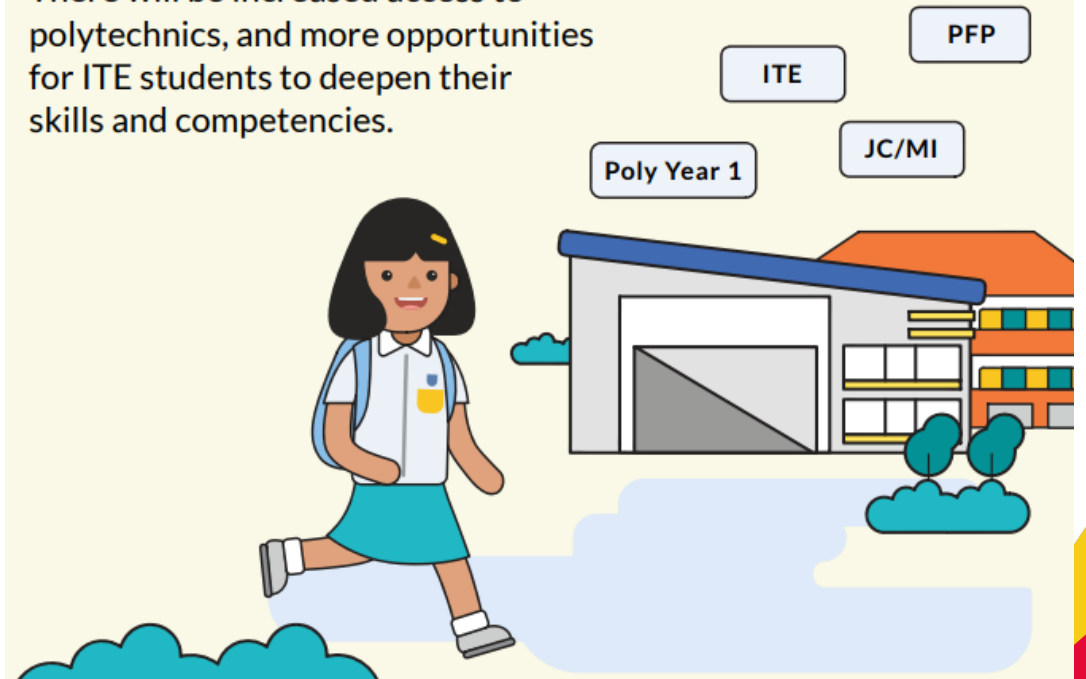
How can I contribute meaningfully to my community?

What do I want to do after I graduate?

Post-secondary pathways under Full Subject-Based Banding

Students will have more options for post-secondary pathways

There will be increased access to polytechnics, and more opportunities for ITE students to deepen their skills and competencies.





Start Planning for Post-Secondary Education

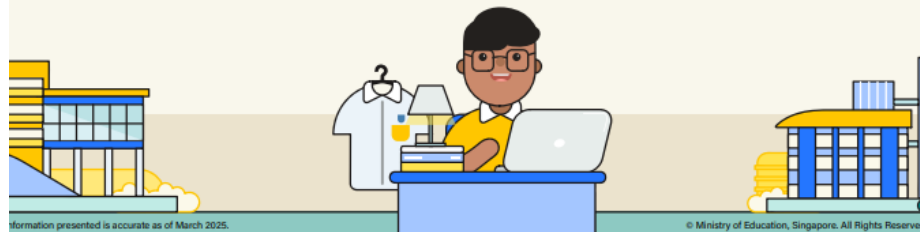


1 CORINTHIANS 12:12

**From 2028,
more post-secondary options
will be available.**

Students taking at least	POST-SEC PATHWAYS					
	ITE Year 1 Entry	ITE Year 2 Entry	Polytechnic Foundation Programme (PFP)	Polytechnic Year 1	Millennia Institute	Junior College
6 G3 subjects	✓	✓	NEW ✓	✓	✓	✓
5 G3 subjects	✓	✓	NEW ✓	✓	✓	NEW ✓
4 G3 + 1 G2 subjects	✓	✓	NEW ✓	NEW ✓		
5 G2 subjects	✓	✓	✓			
4 G1 subjects	✓	NEW* ✓				

*For students who meet ITE's Year 1 academic requirements



Information presented is accurate as of March 2025.

© Ministry of Education, Singapore. All Rights Reserved.

How do I learn best? Would academic or applied learning approach suit me better?

How many subjects do I need to qualify for my desired post-sec course?

Do I have a specific talent or interest area? Would I want to apply for early admissions?

Do I need triple sciences to study Medicine course in the future?

I need to take A Maths !! I want to go to JC ..



Must I take triple science to enter a science stream in a JC?

No you do not.

JCs do not offer triple sciences. In JC students are required to take 4 content subjects, of which one must be math and another contrasting subject (not science). Students should consider taking triple sciences only if they have **done well** in their science and **met the requirement** to qualify as triple sciences is a very demanding course. They should show a strong passion and aptitude in sciences.



<https://www.moe.gov.sg/schoolfinder>

Post Secondary Education

Shorter route to Higher Nitec for ITE students by 2026

More pathways to polys for ITE students from 2027

<https://www.ite.edu.sg/docs/default-source/admissions-docs/full-time/publications/prospectus/ite-2021-prospectus-full-time-education-and-traineeship.pdf>



Institute of Technical Education
Internet Address: www.ite.edu.sg

Under the 'One ITE System, Three Colleges' Model, ITE's curriculum is delivered across three Colleges in Singapore. All Colleges promote multi-disciplinary and cross-level learning.

Each ITE College is equipped with high-tech learning spaces and digital learning approaches. Practical lessons are conducted in exciting, authentic learning environments that simulate actual work situations, from aircraft hangars, well-equipped training kitchens and restaurants to sound stages, AR/VR studios, retail and healthcare labs.



PAYA LEBAR METHODIST GIRLS' SCHOOL (SECONDARY)



Thank you



Official (Open) / Non-Sensitive