



**2026 Meet-the-Parents
ECG and Subject Combination Talk**

Secondary 2

15 May 2026 (Friday)

6.00 p.m.



PAYA LEBAR METHODIST GIRLS' SCHOOL (SECONDARY)



Sec 2 ECG & Subject Combinations Talk Programme Overview

Principal's Address, Ms Amy Ng

Sharing by ECG Counsellor, Ms Lim Hui Ching

Question & Answer Segment



CONTENT

1. Our PLMGS Story

- Our 2026 Focus

2. Our Total Curriculum

3. The New Singapore Context – Full SBB

4. 2027 Sec 3 Subject Combinations

5. Partnering our Parents



PAYA LEBAR METHODIST GIRLS' SCHOOL (SECONDARY)



Our PLMGS Story



School History & Background

1916	Founding of Paya Lebar Methodist School at Boundary Road – School for Boys only, supported by the Methodist mission
1949	Became a Government-Aided School with 2 sessions – Girls in the morning & Boys in the afternoon
1961	Became a fully Girls' School (Full School)
1986	Relocation of school to present site – Lorong Ah Soo (Sec School)
2002	Attained Autonomous School status and SQC Award
2004(Dec)	Relocation to Serangoon North Ave 1
2006 <i>90th Anniversary</i>	•Autonomous Status Reaffirmed (with 2 Best Practice Awards – T&L, Staff Well Being) and SQC Award
2007	<ul style="list-style-type: none"> • Relocation back to Lor Ah Soo • Official re-opening on 12 Oct 2007 • School Distinction Award
2009	Character Development Award
2012	•School Excellence Award & Reaffirmation of all Awards & SARD
2016 <i>100th Anniversary</i>	•PLMGS celebrates 100 th anniversary
2026 <i>110th Anniversary</i>	•PLMGS will be celebrating 110 th anniversary

28 Autonomous Schools in Singapore. Other examples:

- Anderson Sec
- Anglican High
- CHIJ (Toa Payoh)
- Nan Hua High
- Victoria Sch etc.



Criteria for Autonomous Schools

- School has a **good system in place** to achieve the Desired Outcomes of Education
- School has achieved consistently **good academic and other results**
- School is **well-established** and receives **parental support and public recognition**



PAYA LEBAR METHODIST GIRLS' SCHOOL (SECONDARY)



Vision

An outstanding school of choice producing women of fine character with a passion for life and learning

Mission

To nurture every PL-Lite into a whole person who lives in favour of God and man

H.E.A.R.T. Values

- Honour God
- Excellence (Mindset)
- Adaptability
- Respect
- Thankfulness





PAYA LEBAR METHODIST GIRLS' SCHOOL (SECONDARY)

(For Info)

Slide on School Strategy Map has been removed

THE PLMGSS CULTURE

CARE

- Value **people and relationships**
- **Empower** people
- Practise **self-care**



EXCELLENCE

- Recognise **effort and growth** - not perfection
- Facilitate **intentional and effective feedback**
- Make **continuous improvement**
- Every experience is a **learning experience**



SCHOOL PRIDE

- **Everyone can grow and contribute**
- **Sense of belonging** to PL and its heritage
- To be a **beacon to the community**





PAYA LEBAR METHODIST GIRLS' SCHOOL (SECONDARY)



Our 2026 Focus



No of Yrs	Yr	Yr Theme	Inspiration	Theme Verse	Theme Song
110 th year	2026	ONE Perfect 10 in Christ	<i>In an increasingly diverse society and world, we call for "more we" and "less me". To achieve this, we look to Jesus Christ as the unifying force and strength.</i>	Theme Verse 1 Just as a body, though one, has many parts, but all its many parts form one body, so it is with Christ. 1 Corinthians 12:12	We are One https://www.youtube.com/watch?v=82t0rQDzgsk



PAYA LEBAR METHODIST GIRLS' SCHOOL (SECONDARY)



2026 School Theme Song

Verse 4 of our Theme song "We Are One" aptly captures what we hope to achieve as a school.

[Verse 4]

Shaped by the hands of the potter

No two pieces alike

When we build a shelter together

We will shine, we will shine

[Chorus]

Let us draw near to each other

We are one, we are one

We are all sisters and brothers

Telling stories of our Father's love



PAYA LEBAR METHODIST GIRLS' SCHOOL (SECONDARY)

Our Total Curriculum



PAYA LEBAR METHODIST GIRLS' SCHOOL (SECONDARY)



德 智 体 群 美

Morals, Intellect, Physical body, Team spirit, Aesthetics



Holistic Education

Official (Open) / Non-Sensitive



Purpose of Schooling

Research shows:

- Profession
- Performance
- Progression
- Person
- People
- Passion

About Ministry of Education, Singapore

The Education Service's Mission is to
mould the future of the nation.



MOE's vision:

"Thinking Schools, Learning Nation"



LEVEL OUTCOMES & PL EXPERIENCE

Sec 1: iDiscover

Discover their identities, personalities, talents, interests through:

- **iDiscover programme**
- CCA exploration
- PL21+FIS project that serves the school community
- OALC
- Subject-based LJs (Geog+Sci, MT)

Sec 2 iAspire

Aspire to fulfil their roles and responsibilities to their families, school, community and nation through:

- PL21+FIS project that serves families
- Subject-based LJs (Hist, Geog, Performing Arts)
- Cycling / MMA

Sec 3 iInfluence

Influence the people around them positively through:

- PL21+FIS project that serves the community
- OBS / cohort camp,
- ECG conference and PSEI fair
- EL debates

Sec 4/5 iInspire

Inspire others by being an informed citizen and active servant leader through:

- Cohort FIS project that serves the community
- Applied learning modules
- Baccalaureate Service
- Graduation Day
- Cambridge Dinner

PL DOE:

Confident PL-Lite

Passionate Learner

Active Citizen

Inspiring Leader

School-wide: **CCAs**, **EL+MT** Reading Programme, pi-Day (**Maths**), **FamChamp** events, **Sporting** events (Sports Day and PL Heartbeat), **NE** events (TDD, IFD, RHD, ND), **PuLSE**, **Student Leadership** Development



PAYA LEBAR METHODIST GIRLS' SCHOOL (SECONDARY)



25 MAY – 29 MAY (T2W10)



SEC 2
Sec 2 Programme (Poly LJ)
PLSEES [PL Student Experience & Engagement Survey]
Sec 2 Cohort Bonding
Arts Assembly and SSO Concert
Meet-The-Parents (THURS 28 May) via Microsoft Teams
Student Leaders' Dedication Service (FRI 29 May) Celebrating our PL Staff (FRI 29 May)



Assessment Plan 2026

Modes of Assessment

- Both formative and summative assessments in the form of class assignments, tests and examinations are planned to enable each student to evaluate and chart progress of her learning in consultation with her teachers.

	Term 1	Term 2	Term 3	Term 4
Sec 1-3	10% - 1 WA through Alternative Assessment or test	15% - 1 WA through Alternative Assessment or test	15% - 1 WA through Alternative Assessment or test	60% - EOY Exam
Sec 4/5	1 WA through Alternative Assessment or test	1 WA through Alternative Assessment or test	Prelim Exam	GCE N/O Level Examinations



(For Info)

Slide on Semester 1 results has been removed



2026 Assessment - FAQs

When will students & parents receive the assessment feedback?

- Students will receive their assessment feedback once the grading is completed. Students will discuss and review the feedback and learning in class with their teachers. Students are encouraged to share their learning and performance with their parents/guardians. FTs will be able to share WA2 performance on 28 May (Thur) during MTP. Parents/Guardians will receive your daughter/ward's Term 2 Result Slip on 29 May (Fri).

What if I am unwell and absent for my assessments?

- For WAs – Should a student be absent on the day of WA, she will need to provide a **valid Medical Certificate***. She will receive the assessment papers for self timed-practice and **'MC'** status will be indicated for the paper. (*Noted that: An MC that is issued by a Chinese Physician and letter of excuse from parent are **INVALID**).
- For Exam – Should a student be absent on the day of exam paper, she will need to provide a **valid Medical Certificate**, a **'MC'** status will be indicated for the paper. A student who is absent from an examination without a MC will get an **'AB'** status (equivalent to zero mark attainment).



In one word, how would you describe our Sec 2 cohort?

compassionate surprising
lovable reserved unite
enthusiastic positive growing
amazing happy compliant
inquisitive lively energetic
cheerful ok respectful jovial normal
competitive blooming



How do you think our Sec 2 cohort can improve?

Character Traits:

Be curious,
reflective.

Be **respectful, kind,**
prayerful.

Be confident,
resilient.

Social-Emotional:

Mix around.

Be united.

Peer help and
encourage.

More peer support
relationships.

Learning Attitude,

Dispositions:

Be focused,
disciplined, urgent.

Take initiative,
ownership.

Spirit of lifelong
learning.

Passionate about CCAs, motivated to study

REPORT: LIM YUFAN
limyufan@spk.com.sg

YOU can pursue your passion and still get good grades.

Abigail Lim, Alison Han and Karthigha Pon Rajoo, who are student leaders at Paya Lebar Methodist Girls' School (Secondary), are living examples.

The 16-year-olds topped the school in the O-level exams, despite being heavily involved in co-curricular activities (CCAs).

Abigail, who is her school's top scorer with eight A1s, is a prefect and the vice-president of the harp ensemble. She is also the student in charge of Campus ChangeMakers, a student body that organises community service projects for the less privileged.

"I'm very happy to have joined the harp ensemble because through it, I've learnt a new skill," said Abigail. "Music is a form of de-stressing for me."

Ms Annabella Ong, Abigail's English Language teacher, said she had displayed strong leadership qualities, organising meetings among Campus ChangeMakers on her own and delegating work with minimal input from the teachers.

Madam Connie Ng, Abigail's mother, believes that the reason behind her good results is constant revision.

Self-motivated

"I do not push her because she is very self-motivated," said Madam Ng, who is a childcare teacher. "She doesn't study past 11 pm and relaxes by playing the piano whenever she feels stressed."

Alison and Karthigha, who have eight and seven A1s respectively, are two of the other top scorers from the school.

Together with Abigail, Alison was awarded the Colours Award by the school, in recognition of their outstanding leadership abilities and contribution to



HIGH-FLIERS:

(From left) Paya Lebar Methodist Girls' School (Secondary) students Karthigha Pon Rajoo, Abigail Lim and Alison Han.

(NIP PICTURE: GARY GON)

their CCAs.

Alison, the vice-president of the English Literary, Drama and Debating Society, has acted in many of the school's plays and musicals.

Alison said she always looks forward to going for the society as she loves to act and is happy to be with her friends.

"I feel like it is normal for me to act," said Alison, who is also a member of the Prefectorial Board's executive committee. "It is through acting that I express myself better."

As for Karthigha, she has shown eloquence by winning Sorkalam, a national Tamil debate competition, in 2010.

"Through taking part in oratorical competitions, I've gained a lot of confidence in myself," said Karthigha. "It has also helped me in my Tamil, for which I got an A1."

Karthigha, who also has a love of photography, has entered photography competitions as a member of the school's Media and IT Club.

All three girls intend to enrol in junior colleges as they want to keep their options open.

Holistic Education in PLMGS



PAYA LEBAR METHODIST GIRLS' SCHOOL (SECONDARY)



LEAPS 2.0



LEAPS 2.0 points

LEAPS 2.0 is a framework to recognise secondary school students' holistic development. Students will be recognised with levels of attainment in four domains:

- **L**eadership,
- **A**chievement,
- **P**articipation and
- **S**ervice



Demonstrating an Excellent Mindset in the Co-curriculum

Leadership

(Level 3) At least a...

- Class Monitor
- Peer Support Leader
- Peer Lite
- Prefect
- LS CCA chairperson / Vice-chairperson
- LS CCA Exco
- US CCA Comm
- LS House Captain/ Vice-Captain
- US House Comm
- UG Sergeant
- Chairperson / Vice chairperson for GLYW project
- Committee member for school-wide events
- NYAA (Silver)



Service

(Level 5) Completed at least 24 hours of service through...

- **Sec 1 & 2 Local FIS**
- **Sec 3 GLYW** (student-initiated VIA project)
- **Sec 4/5 CNY FIS** that impact the community beyond the school

Achievement

(Level 3) Represented school for ...

- **2 years** in local or external events

Participation

(Level 4) Participated in CCA

- **for 4 years with at least 75% attendance for each year**
- Demonstrate exemplary conduct and active contribution (*Demonstrate 'Very Strongly' in most behaviour traits across the 5 HEART values. (*Refer to "Translating Values to Behaviours" in Annex)*)



PAYA LEBAR METHODIST GIRLS' SCHOOL (SECONDARY)



The New Singapore Context – Full SBB

2026 Sec 2 will take the 2nd SEC Examinations



FULL Subject-based Banding (SBB)

WEDNESDAY, SEPTEMBER 4, 2019 | THE STRAITS TIMES

28 secondary schools to pilot full subject-based banding

They will offer humanities at higher level and try out new Sec 1 form class arrangements

Amelia Teng
Education Correspondent

A group of 28 secondary schools will be the first to allow their students to take a greater number of subjects at a higher level next year, ahead of an overhaul to Singapore's education system in a few years.

The Ministry of Education (MOE) yesterday revealed for the first time the 28 schools that will pilot full subject-based banding, where students take subjects, at a higher or lower level, based on their strengths.

The schools include Bedok Green Secondary, Paya Lebar Methodist Girls' School (Secondary), Pei Hwa Secondary and St Patrick's School.

Their students will be able to choose to study humanities subjects - geography, history and literature in English - at a more demanding level from Secondary 2, if they have the aptitude. Existing options are English, mathematics, science and mother tongue.

The 28 pilot schools will also try out new Sec 1 form class arrangements instead of the traditional sorting by Express, Normal (Academic) and Normal (Technical) streams. Students from different streams will

be in the same form class and take a common set of subjects that will amount to about a third of curriculum time.

These include art, character and citizenship education, design and technology, and physical education.

MOE said that next year's pilot comes ahead of the roll-out of full subject-based banding to all secondary schools by 2024, in the same year that the Normal and Express streams will be scrapped.

The 28 schools were selected based on their readiness, and all had taken part in earlier phases of subject-based banding and have experience in supporting students of different learning abilities. Teachers have been undergoing training to customise learning to different needs of students, and redesigning resources like assignments or worksheets.

One pilot school, Queenstown Secondary, hopes to let Sec 1 students next year have a hand in naming their classes, besides evenly distributing students from different streams across classes.

Its principal Rasidah Bahin said more students have taken higher-level subjects. On average, about 25 per cent of its Normal (Academic) students take one or more higher-

Bowen Secondary tries out mixed-stream classes for Sec 2 cohort

To prepare for the upcoming changes to form classes, Bowen Secondary School decided to test the waters this year.

It mixed up its Secondary 2 cohort during character and citizenship education (CCE) lessons between March and April as part of a trial to see how students from different streams would take to one another.

Ms Dorothy Lim, senior CCE teacher, said co-curricular activity (CCA) groupings were used as this was already a way for students from all three streams - Express, Normal (Academic) and Normal (Technical) - to mix.

All 280 Sec 2 students took part in five sessions, where they learnt topics such as acceptance and being inclusive. For instance, in learning about empathy with people who have physical disabilities, students refrained from using one limb to play a ball game.

Each of the eight groups had 30 to 35 students from two to three CCAs. They were of different genders, races and academic streams.

They got to make new friends from other CCAs and streams. Sec 2 Express student Huzefa Aziz said: "When you pass the ball during a game, you aren't passing to



Bowen Secondary teacher Alvin Chong facilitating a lesson to help students in a mixed-stream class develop empathy for people who are visually disabled. PHOTO COURTESY OF BOWEN SECONDARY SCHOOL.

an N(A), N(T) or Express student; you are passing it to your friend."

Bowen Secondary is one of the 28 pilot schools implementing full subject-based banding from next year, along with mixed form classes for Sec 1. It usually has seven Sec 1 classes - four Express,

two Normal (Academic) and one Normal (Technical).

Ms Lim hopes students gain a deeper sense of empathy and learn to work with peers who have had different experiences. Next year, the school will also form "buddy groups" for Sec 1

classes to encourage students to look out for one another. Class bonding time - in the form of time for reflection, games or breakfast - will be set aside every Friday too.

Amelia Teng

TOP OF THE NEWS | A5

28 pilot schools

- Ang Mo Kio Secondary
- Assumption English School
- Bedok Green Secondary
- Bowen Secondary
- Clementi Town Secondary
- Deyi Secondary
- Edgefield Secondary
- Evergreen Secondary
- Gan Eng Seng School
- Greendale Secondary
- Jarong Secondary
- Jarong West Secondary
- Mayflower Secondary
- Monfort Secondary
- Paya Lebar Methodist Girls' School (Secondary)

- Pei Hwa Secondary
- Ping Yi Secondary
- Queenstown Secondary
- Riverside Secondary
- St Andrew's Secondary
- St Anthony's Canossian Secondary
- St Patrick's School
- Swiss Cottage Secondary
- Temasek Secondary
- West Spring Secondary
- Whitley Secondary
- Yuying Secondary
- Zhenghua Secondary

that about 10 per cent of its Normal (Academic) students will be able to take humanities subjects at a higher level, while St Andrew's Secondary said about 14 Sec 1 Normal (Academic) students may similarly qualify by the end of this year.

Mrs Marion Tan, principal of St Andrew's, said: "Before we started subject-based banding last year, our lower secondary students took subjects only at the level of their streams. And for many, it was as if they were imposing an artificial cap on how far they should challenge themselves for any subject, even if they had the interest and aptitude for it."

"With subject-based banding, we have students who are willing to push themselves further to realise their potential in a given subject with the help of their teachers. And it often encourages them to excel in other subjects or areas of their school life as well."

ateng@sph.com.sg

PL (Sec) Full SBB Implementation

PL is 1 of 28 Pilot Schools.

- 2020 Sec 2 NA/NT - SBB for Humanities in addition to E, M, S, MTL
- 2021 Sec 1 all - Full mix for all S1 classes, common curricular subjects
- 2022 Sec 1 & Sec 2 all - Mixed form classes, common curricular subjects
- 2023 Sec 1 & Sec 2 all - Mixed form classes, common curricular subjects; Sec 3 - mixed form classes based on no. of subjects offered
- 2024 Sec 1 & Sec 2 all - Mixed form classes, common curricular subjects; Sec 3 - retain mixed form class like in Sec 2 = **Steady State**



Key Reasons for Full SBB Implementation:

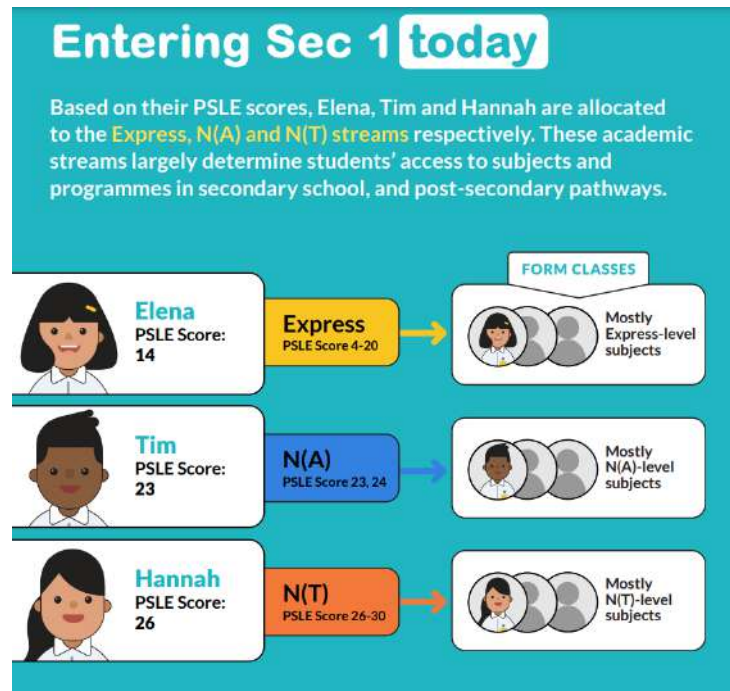
- **Customized Learning Pathways:** Students can tailor their academic journey, taking subjects at more or less demanding levels (G1, G2, or G3, formerly N(T), N(A), and Express) based on their individual aptitude. [MOE +1](#)
- **Reduced Stigma:** By eliminating formal streaming (Express/N(A)/N(T)) and using mixed-form classes, the system reduces labelling, allowing students to interact with peers of different academic profiles. [MOE +1](#)
- **Greater Social Integration:** Students spend about one-third of their time in mixed-form classes for subjects like Art and Character & Citizenship Education, fostering broader friendship groups. [MOE +1](#)
- **Holistic Development:** It promotes a growth mindset and allows students to pursue interests in specific subjects, such as taking higher-level Humanities from Secondary 2. [MOE +1](#)
- **Improved Motivation:** Early pilots indicated that students take greater ownership of their learning, with improved confidence to overcome challenges,. [MOE +1](#)
- **Future-Ready Skills:** The system supports a "managed buffet" approach, teaching students to navigate choices and encouraging flexibility for future pathways. [YouTube · MOE Singapore +1](#)



2027 Sec 3 Form Class Structure

Full SBB

- Social-mixing
- Students can offer subjects at APPROPRIATE subject levels



From 2025 Upper Sec Form Class

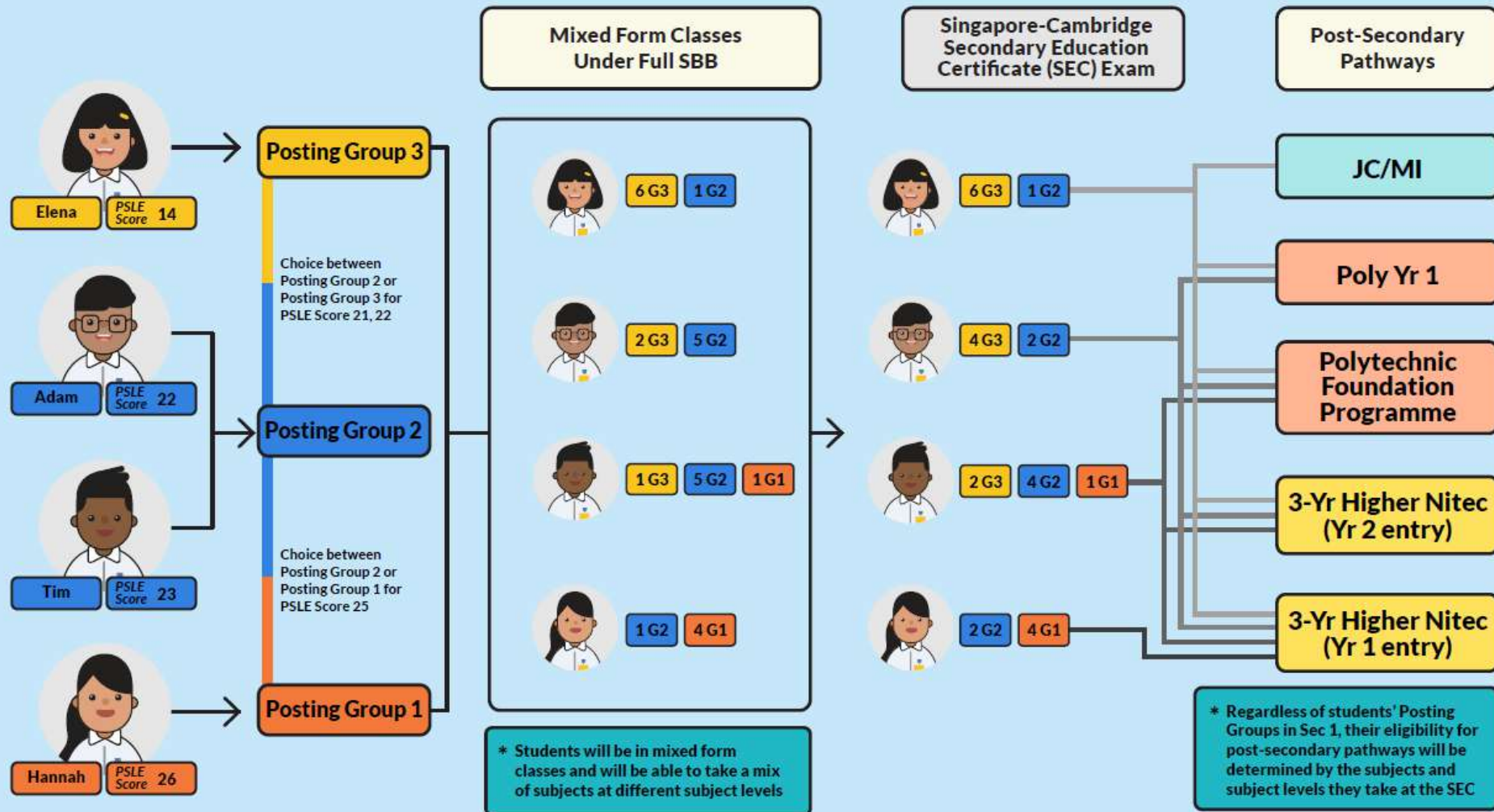
- Social mixing: similar to Lower Sec – retain current form classes

Class 2026	Class 2027
2.1	3.1
2.2	3.2
2.3	3.3
2.4	3.4
2.5	3.5
2.6	3.6
2.7	3.7
2.8	3.8

Key Considerations:

- Student familiarity with their classmates, needs and aspirations
- Staff needs, strengths, resource availability
- Structure for subject teaching group option formation and generation of timetable

Example: Secondary school experience under Full SBB



Information presented is accurate as of March 2024

Key Features of PSE

Current (for N-Level and O-Level cohort)

Joint Admissions Exercise (JAE)

For O-Level cohort

Polytechnic Foundation Programme Admissions Exercise (PFPAE)

For N(A)-Level cohort

ITE Joint Intake Exercise (ITE JIE)

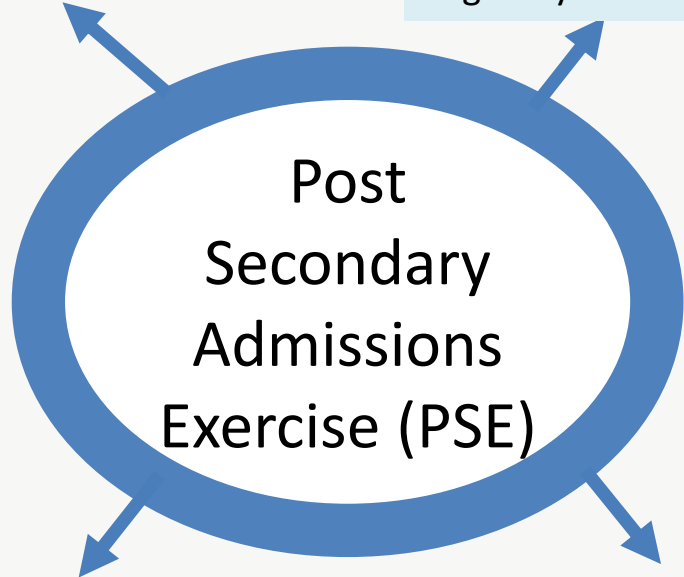
- JIE 'O' (2-Year *Higher Nitec*) for O-Level cohort
- JIE 'H' (2-Year *Higher Nitec* under Direct-Entry-Scheme to Polytechnic Programme (DPP)) for N(A) cohort
- JIE 'N' (3-Year *Higher Nitec*) for N(A) and N(T) cohort
- *JIE 'E' (4-Year *Higher Nitec*) under Enhanced Foundation Programme for N(T) cohort

*SEC students will apply directly to ITE for the ITE Enhanced Foundation Programme, not through PSE. More details will be available in 2027.

Post-Sec Admission Year 2028 (2027 SEC graduating cohort)

Apply through Post-Sec portal using personal Singpass.

pathways and courses:
Seek admission to courses from 6 different pathways based on eligibility criteria.



Post Secondary Admissions Exercise (PSE)

Common timeline and process:

- A single 6-day application window starting from day of SEC result release in mid Jan.
- Posting results release for all courses on same day by early Feb.

Posting process: Net aggregate score (including deduction of bonus points) remains key posting criterion, with introduced as tie-breaker.

RECAP: PSE Pathway Eligibility by Subject Level

Starting in 2028, eligibility for the 6 different pathways under PSE is determined by specific combinations of G1, G2 and G3 subject levels.

Pathways		ITE (3-Year)	ITE (2-Year)	NAFA Foundation Programme (NFP)	Arts Institution Diploma	PFP	Poly Diploma	Millennia Institute	Junior College
Apply in PSE				Direct application to school. Learn more	Direct application to school. Learn more				
^Students taking at least X subjects	5 G3								
	4 G3 + *1 G2								
	5 G2								
	4 G1		#Via ITE 3-Year						

Note:

^To compute the aggregate type for each pathway, students must take all the required subjects at the specified subject level.

*Poly Diploma (ELR2B2) requires 4 subjects at G3 level; only the 5th subject (B2) can be at G2 level.

#Not available for direct application in PSE. Students taking 3-Year Higher Nitec course may be offered the accelerated pathway (to attain a Higher Nitec in a shorter duration of about two years) if they meet the academic requirements during their Year 1 Semester 1 examinations.



Revised Junior College (JC) Admission Criteria

Subject requirements for Junior College admission under revised L1R4 criteria



Component	Subjects	Now L1R5	2028 JAE L1R4
L1	English or Higher Mother Tongue	✓	✓
R1	Any 1 best-scoring subject from Humanities	✓	✓
R2	Any 1 best-scoring subject from Mathematics or Science	✓	✓
R3	Any 1 best-scoring subject from Humanities, Mathematics or Science	✓	✓
R4	Any 1 best-scoring subject	✓	✓
R5	Any 1 best-scoring subject	✓	

Millennia Institute (MI)'s L1R4 subject requirements will also be updated to require these three subjects, while the qualifying threshold will **remain at L1R4 ≤ 20.**

Subject requirements for Millennia Institute (MI) admission under revised L1R4 criteria

Component	Subjects	Now L1R4	2028 JAE L1R4
L1	English or Higher Mother Tongue		English or Higher Mother Tongue
R1	Relevant Any 1 best-scoring subject from Humanities, Mathematics or Science		Relevant Any 1 best-scoring subject from Humanities
R2	Relevant Any 1 best-scoring subject from Humanities, Mathematics or Science		Relevant Any 1 best-scoring subject from Mathematics or Science
R3	Best-Scoring Any 1 best-scoring subject		Relevant Any 1 best-scoring subject from Humanities, Mathematics or Science
R4	Any 1 best-scoring subject		Any 1 best-scoring subject



Bonus Point System

The cap on bonus points for JC admission will be lowered from a **maximum of 4 to 3 points** to account for the reduction in the number of subjects included in the L1R4 aggregate computation.

The bonus points cap for admission to MI will also be aligned with that for JC admissions.

PLMGS(Sec) is affiliated to ACJC



Type of Bonus Points	Points
CCA Grade	Excellent: 2 Good: 1
EL and HMTL Grade ◦ A1 to C6 for both subjects	2
Chinese/Malay (Special Programme) or Bahasa Indonesia Grade ◦ A1 to C6	2
Affiliated JC	2

Now

MAXIMUM OF
4 from any combination

2028 JAE

MAXIMUM OF
3 from any combination

PL-Lites must put **ACJC** as their :

- 1st choice or
- 1st and 2nd choice,
e.g.
ACJC 1st choice – Science
ACJC 2nd choice – Arts





PAYA LEBAR METHODIST GIRLS' SCHOOL (SECONDARY)

2027 Sec 3 Subject Options and Combinations Sharing



What's next?

Secondary 1 & 2

End of Secondary 2

Secondary 3 & 4

Deciding on upper secondary subject combinations

All students will offer between 5 and 8 examinable subjects for upper secondary.

Upper secondary

Students will continue to have flexibility to offer subjects at different subject levels, including elective subjects (e.g. Additional Mathematics, POA, NFS).



Offering Subjects at More Demanding Level (MDL) in Upper Secondary

- Students may offer subjects at MDL in Secondary 3 based on school's holistic considerations, which include students' subject-specific performance and their ability to cope with all subjects.
- For Humanities, students must **first offer the compulsory Humanities (i.e. Social Studies + Elective Humanities Subject i.e. Geog, Hist or Lit)** at a subject level that he or she is comfortable with. Depending on students' readiness and ability, students may offer a second Humanities subject of a different discipline at G2 or G3.



Progression to Secondary 3

At the end of Secondary 2...

Students who do not meet the following academic requirements **are to re-calibrate curricular load**:

- (a) Pass EL and 2 subjects, or
- (b) Pass at least half the total no. of examinable subjects offered.



Progression to Secondary 3

Calibrate Curricular Load ...



At the end of Sec 2	Outcomes
<ul style="list-style-type: none">Students who <u>do not meet</u> the academic requirement	<p><u>Scenario 1</u></p> <ul style="list-style-type: none">Reducing number of Upper Secondary subjects (subjected to minimum subject policy – 5 Subjects) and/or
	<p><u>Scenario 2</u></p> <ul style="list-style-type: none">Offering subjects at Less Demanding Level (G3 to G2 or G2 to G1) – case by case



Progression to Secondary 3

Calibrate Curricular Load ...



Scenario 3	
<ul style="list-style-type: none">• Obtained 75% or better for Overall (at End-of-Year) for core subjects• Teacher's Recommendation	<p>Offer EL, MTL, Math, Sci & Humanities at More Demanding Level (MDL)</p> <ul style="list-style-type: none">• G2 to G3• G1 to G2 – for relevant subjects

Scenario 4	
<ul style="list-style-type: none">• Students offering <u>most or all</u> core subjects at MDL• Teacher's Recommendation	<p>Elective subjects (e.g. A Math, POA, 2nd Hum, Art, Music, NFS etc.) may be offered at More Demanding Level (MDL) as well</p>



How Subject Combinations are derived

Combinations are reviewed annually and modified based on

- Available Staff or Physical Resources
- **Requirements for Post-Sec Courses**
- Observations and discussions on the strengths, aptitudes & aspirations of students
- **National Examination performance of previous batches**

Lower Secondary Subject Offerings (with corresponding Upper Secondary Offerings) (PLMGS(Sec))

Examinable subjects (Lower Sec)	Examinable subjects (Upper Sec)	G1	G2	G3
English	English	√	√	√
Mother Tongue (CL, ML, TL)	Mother Tongue (CL, ML, TL)	√	√	√
Higher Mother Tongue (HCL, HML, HTL) <i>*(For those who qualify)</i>	Higher Mother Tongue (HCL, HML, HTL)			√
Science	Science (Chem /Phy), (Chem/Bio)	√	√	√
	Pure Science (Chem, Bio, Physics)			√
Mathematics	Mathematics	√	√	√
	A Maths		√	√
	Principles of Accounts		√	√
History	History			√
Geography	Geography			√
Literature in English	Literature in English			√
	Combined Humanities (SS/Geo, SS/Hist, SS/Lit)		√	√
Food and Consumer Education	Nutrition and Food Science		√	√
Art	Art			√
Design & Technology				
	Music (O level music)			√
Non-examinable subjects (Lower Sec)	Non-examinable subjects (Upper Sec)	G1	G2	G3
Music				
Physical Education	Physical Education	√	√	√
Character and Citizenship Education	Character and Citizenship Education	√	√	√
Social Studies (G1 Humanities) (for G1 Only)	Humanities Exposure Modules (HEM for G1)	√		



Subject Combi Allocation Principles

Merit

- Overall Subject Percentage at Sec 2 and Subject Eligibility Criteria

Choice

- Rank order – 1st Choice will be considered if the results meet the subject criteria

Vacancy

- Availability of places in a particular subject option

Subjects offered depends on:

- Take-up rate – a subject will not be offered if the take-up rate is not met
- Availability of teachers – a subject will have a maximum class-size if too many students opt for it.



2027 Sec 3 Subject Combinations

– students taking all subjects at G3



	Subject
Compulsory Subject 1	English, G3
Compulsory Subject 2	Mother Tongue, G3
Compulsory Subject 3	Mathematics, G3
Subject Cluster 1 (Humanities)	SS/Geography, G3
	SS/History, G3
	*SS/Literature, G3
Subject Cluster 2 (Sciences)	Pure Chemistry, Physics and Biology, G3
	Pure Chemistry and Pure Biology, G3
	Pure Chemistry and Pure Physics, G3
	C. Science (Chemistry/Biology), G3
	C. Science (Chemistry/Physics), G3
Subject Cluster 3 (Maths, Others)	Additional Maths and POA, G3 (for students opting for C. Science only)
	Additional Maths, G3
	POA, G3
	NFS, G3
Subject Cluster 4 (Aesthetics and Humanities)	Pure Geography, G3
	*Pure Literature, G3
	~Art, G3
	~Music, G3
	Not Taking

Rank order your
Subject Choices

*Subjected to availability of staff resource. At maximum the school can offer 1 Pure Literature and 1 SS/Literature, G3 class. If additional teacher resource is available, we may extend to 2 SS/Literature G3 across all the classes.

~Students cannot offer both Art/Music and Nutrition and Food Science together.



Subject Criteria (G3 Subjects)



Subjects	S2 G3 (Academic Performance) Criteria	
Pure Sciences~ (Biology and Chemistry or Physics and Chemistry)	S2 G3 English AND Science (Overall)	65% (B3) or better for both subjects
Additional Mathematics^	S2 G3 English AND Mathematics (Overall)	65% (B3) or better for both subjects
Pure Humanities^ (Literature in English, History, Geography)	S2 G3 English AND Lit/Hist/Geog (Overall)	65% (B3) or better for both subjects
Art/Music (at G3)	S2 Art, Selection Test/Audition AND Interview Music Selection Test/Audition AND Interview	Art - 65% (B3) or better Music - music theoretical knowledge and formal training in primary instrument

~ Eligible students who intends to take double Pure Sciences

^ Eligible students who intends to take the relevant G3 subjects

Note that: all options are subjected to **minimum** of **15** students and **maximum** of **40** students class size per subject. And offering of the **Pure Literature** subject is subjected to the availability of manpower resources for the year.



Sec 3 Subject Combinations

– students taking all subjects at G2 or subjects at G2/G3



	Subject^
Compulsory Subject 1	English, G3
	English, G2
Compulsory Subject 2	Mother Tongue, G3
	Mother Tongue, G2
Compulsory Subject 3	Mathematics, G3
	Mathematics, G2
Subject Cluster 1 (Humanities)	SS/Geography, G3
	SS/Geography, G2
	SS/Literature, G3
	SS/Literature, G2
	SS/History, G3
	SS/History, G2
Subject Cluster 2 (Sciences)	C. Science (Chemistry/Biology), G3
	C. Science (Chemistry/Biology), G2
	C. Science (Chemistry/Physics), G3
	C. Science (Chemistry/Physics), G2
Subject Cluster 3 (Aesthetics, Science and Humanities)	Additional Maths, G2
	NFS, G2
	POA, G2
	Not Taking

Criteria to offer subject at a more demanding level (G3) in Secondary 3	
Current students taking the subject at G3	Obtained a Pass grade for the subject for Overall (at End-of-Year)
Other students	<ul style="list-style-type: none"> Obtained 75% or better for Overall (at End-of-Year) Teacher's Recommendation



Subject Criteria (G2 Subjects)



Subjects	S2 G3/G2 (Academic Performance) Criteria	
Additional Mathematics, G2	S2 G2 English AND G3 Mathematics (Overall) or	EL - 65% (Grade 3) or better Maths - 60% (B3) or better
	S2 G2 English AND Mathematics (Overall)	65% (Grade 3) or better
Art/Music (at G3)	S2 Art, Selection Test/Audition AND Interview Music Selection Test/Audition AND Interview	Art - 65% (B3) or better Music - music theoretical knowledge and formal training in primary instrument

Note that: all options are subjected to **minimum** of **15** students and **maximum** of **40** students class size per subject. And offering of the **Elective Humanities** subject is subjected to the availability of manpower resources for the year. School may also consider offering Pure Humanities if there are available manpower resources.



2026 Sec 3 Subject Combinations

– students taking at least one subject at G1



	Subject
Compulsory Subject 1	English, G2
	English, G1
Compulsory Subject 2	Mother Tongue, G2
	Mother Tongue, G1
Compulsory Subject 3	Mathematics, G3
	Mathematics, G2
	Mathematics, G1
Compulsory Subject 4	Elements of Business Studies, G1
Subject Cluster 1 (Humanities – non-examinable)	Humanities Elective Module, G1
Subject Cluster 2 (Sciences)	Science, G1
	C. Science (Chemistry/Biology), G2
	C. Science (Chemistry/Physics), G2
NFTE Programme (Non-examinable)	

Rank order your Subject Choices



Criteria to offer subject at a more demanding level (G2) in Secondary 3	
Current students taking the subject at G2	Obtained a Pass grade for the subject for Overall (at End-of-Year)
Other students	<ul style="list-style-type: none"> Obtained 75% or better for Overall (at End-of-Year) Teacher's Recommendation

Scenario Learning 1 – student taking all subjects at G3



EXAMINABLE SUBJ AT S2				S2 PERFORMANCE	INTEREST	ASPIRATIONS
EL	G3	HIST	G3	<ul style="list-style-type: none"> Met academic requirement Scored above 75% for EL, SCI and GEOG 	<ul style="list-style-type: none"> Intends to invest more time to pursue non-academic interests (i.e. she will be serving on the EXCO in CCA) and expressed desire to explore sizing her curricular load (e.g., offering an elective at G2) Has enjoyed Sciences, History and Mathematics lessons and is considering which related subjects to offer at US while weighing her overall curricular load 	<ul style="list-style-type: none"> Aspires to go to JC/MI to offer mainly Humanities and Arts subjects or to study Business or Psychology in a Polytechnic
MA	G3	LIT	G3			
MTL	G3	ART	CMN			
SCI	G3	D&T	CMN			
GEO	G3	FCE	CMN			

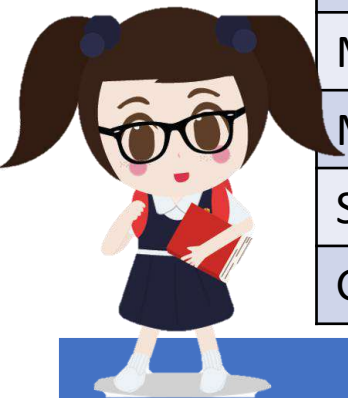
Possible Subject Combination

	Offering 6 subject combination		Offering 7 subject combination	
Compulsory sub 1	EL	G3	EL	G3
Compulsory sub 2	MTL	G3	MTL	G3
Compulsory sub 3	MA	G3	MA	G3
Sub cluster 1	1. SS/Geog , 2. SS/Hist, 3. SS/Lit	G3	1. SS/Hist , 2. SS/Geog, 3. SS/Lit	G3
Sub cluster 2	1. P. CH P. BI , 2. P. CH P. PH, 3. C. CH/BI, 4. C. CH/PH	G3	1. P. CH P. BI , 2. P. CH P. PH, 3. C. CH/BI, 4. C. CH/PH	G3
Sub cluster 3	NIL		Add MA	G3
Sub cluster 4 & 5	NIL		NIL (or P. PH as 8 th subject?)	

Post-Sec Options

- JC / MI
- Poly Year 1
- PFP

Scenario Learning 2 – student taking subjects at G2 or G3



EXAMINABLE SUBJ AT S2				S2 PERFORMANCE	INTEREST	ASPIRATIONS
EL	G2	HIST	G2	<ul style="list-style-type: none"> Met academic Requirement Scored slightly above 50% for Sci and Lit, G3 Scored above 65% for MA and GEOG 	<ul style="list-style-type: none"> Enjoys learning about physical landforms in Geography Lessons Likes to read books (English and MTL) Loves to solve mathematical problem and seeks out different methods of number analysis 	<ul style="list-style-type: none"> 'I don't know what I want yet' Uncertain about her post-sec options
MA	G2	LIT	G3			
MTL	G3	ART	CMN			
SCI	G3	D&T	CMN			
GEO	G2	FCE	CMN			

Possible Subject Combination

	Offering 5 subject combination	Offering 6 subject combination
Compulsory sub 1	EL	EL
Compulsory sub 2	1. MTL	1. MTL
	2. MTL	2. MTL
Compulsory sub 3	MA	MA
Sub cluster 1	1. SS/Geog , 2. SS/Lit	1. SS/Geog , 2. SS/Lit
	3. SS/Lit	3. SS/Lit
Sub cluster 2	1. C. CH/BI , 3. C. CH/PH	1. C. CH/BI , 3. C. CH/PH
	2. C. CH/BI, 4. C. CH/PH	2. C. CH/BI, 4. C. CH/PH
Sub cluster 3	NIL	1. A MA , 2. P. Geog, 3. POA, 4. NFS

Post-Sec Options

1. PFP
2. Higher Nitec (3 yr)
3. Higher Nitec (2 yr)

Scenario Learning 3 – student taking at least 1 subject at G1



EXAMINABLE SUBJ AT S2				S2 PERFORMANCE	INTEREST	ASPIRATIONS
EL	G2	HUM	G1	<ul style="list-style-type: none"> Met academic requirements Did well in MTL (>75%), eligible to offer MTL at G2 Failed Science 	<ul style="list-style-type: none"> Likes to read books (English and MTL) Loves to solve mathematical problem and able to interact well with younger kids 	<ul style="list-style-type: none"> Aspires to work with younger children in early childhood education or hospitality operations
MA	G2	ART	CMN			
MTL	G1	D&T	CMN			
SCI	G1	FCE	CMN			

Possible Subject Combination

Offering 6 subject combination		
Compulsory sub 1	1. EL	G2
	2. EL	G1
Compulsory sub 2	1. MTL	G2
	2. MTL	G1
Compulsory sub 3	1. MA	G2
	2. MA	G1
Compulsory sub 4	EBS	G1
Sub cluster 1	SS/HEM	G1
Sub cluster 2	Sci	G1

Post-Sec Options

- Higher Nitec (3 yr)
- Higher Nitec (2 yr)



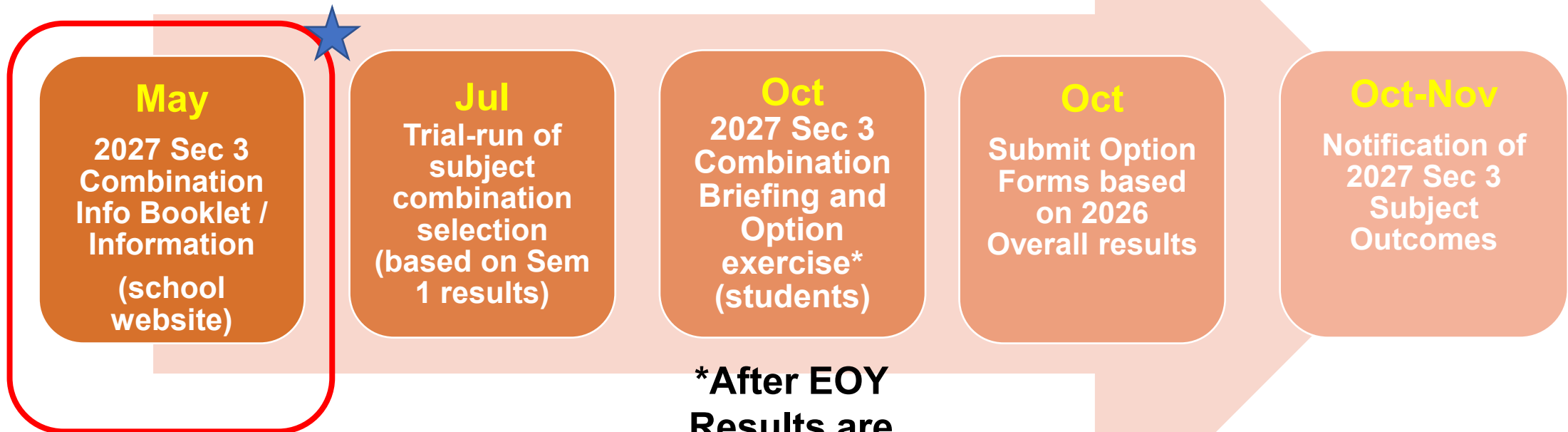
Subject classes

Points to note:

- There must be 15 or more students choosing this particular option before the school will consider opening the class.
- Student cannot be a school and private candidate at the same time. Therefore, student cannot sit for any subject at the national examinations as a private candidate.



Timeline @ a Glance



***After EOY
Results are
released**



Subject Option Online Portal (Actual)

You will be receiving an email via your plmgss email account

Subject: Subject Combination and Option Exercise

Dear <Name>, <Class>

The following details are your information for the Secondary 3 2024 subject combination and option exercise:

URL link: <https://plmgs.schoolhub.sg/>
Username: <XXXXXX>
Password: <XXXX>

Please complete the trial option by XX XXX XX (8 am).

Thank you.

PL Admin



PAYA LEBAR METHODIST GIRLS' SCHOOL (SECONDARY)



Subject Option Online Portal

<https://plmgs.schoolhub.sg/>

Home

User login

Username *

Password *

Log in

[Reset your password](#)

Announcement

Submitted by admin on Sun, 13-Oct-2024 - 11:00

This is a Subject Combination Exercise for Secondary Two students going on to Secondary Three in 2025.

Subject Combinations based on their interest, ability and aptitude.

Registration Period	19 Oct (Sat) 9am to 23 Oct (Wed) 11 pm
Check Allocation	11 Nov (Mon) 9am
Appeal Period	12 Nov (Tue) 9am to 15 Nov (Fri) 11 pm
Check Appeal	21 Nov (Thu) 9am

Student may download the Online Userguide (See Attachment) for reference.

If you have problem with the login, please send email to jonathan@rjcat.com with the following info:

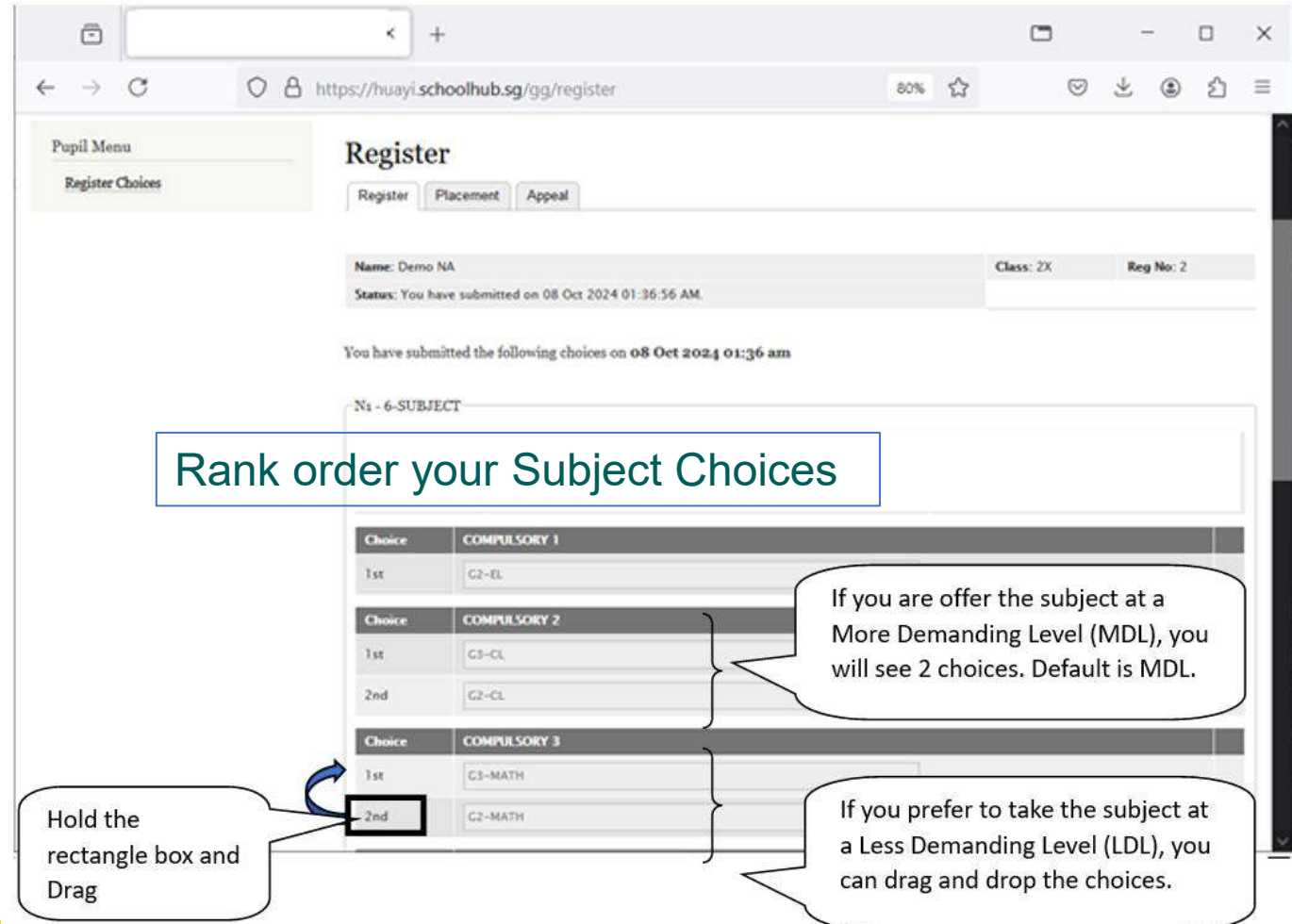
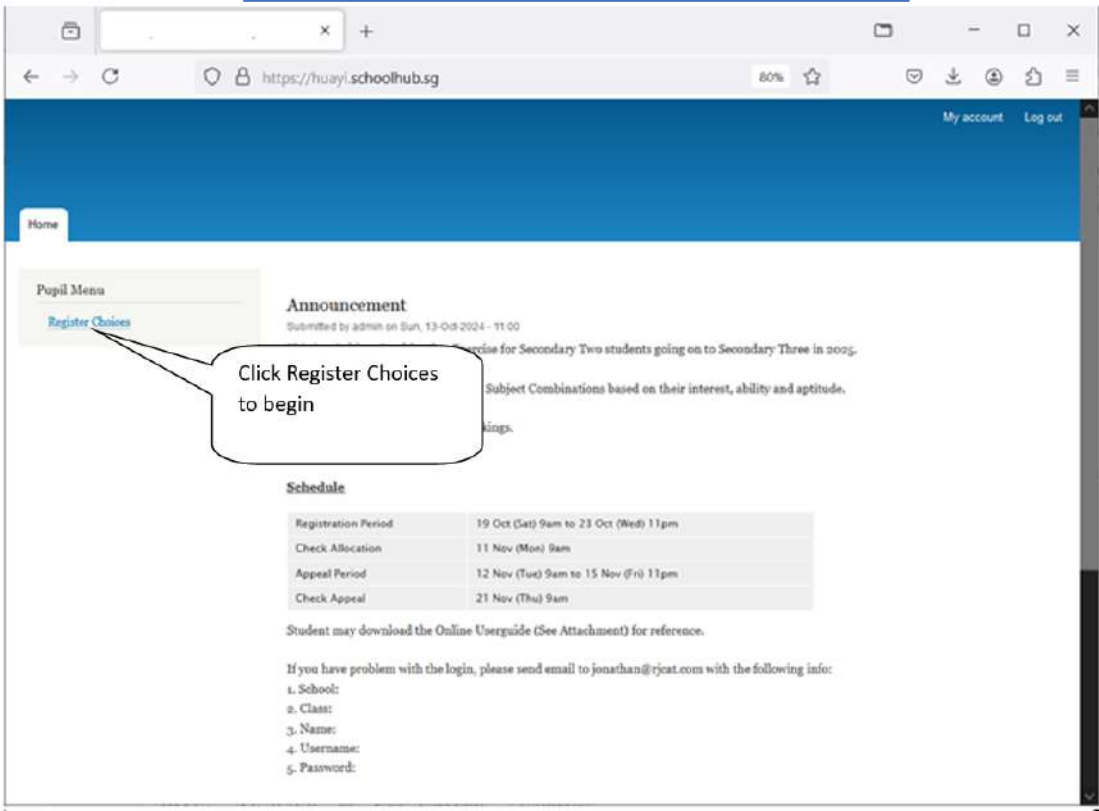
1. School:
2. Class:
3. Name:
4. Username:
5. Password:

Official (Open) / Non-Sensitive



Subject Option Online Portal

Register Choices





Subject Option Online Portal

Sample Confirmation Slip (for your reference)

Register

Name: Demo NA Class: 2X Reg No: 2

Status: You have submitted on 08 Oct 2024 01:36:56 AM.

You have submitted the following choices on 08 Oct 2024 01:36 am

Choice	Subject Code
1st	G2-EL
Choice	COMPULSORY 2
1st	G3-CL
2nd	G2-CL
Choice	COMPULSORY 3
1st	G2-MATH
2nd	G3-MATH

You prefer to offer G2-MATH.
G2-MATH is 1st
G3-MATH is 2nd

Only subjects that you are eligible for will display for your rank order.

Subject Combination for Secondary Three Confirmation Slip

Name: Demo NA

Class: 2X ()

You have submitted on 13 Oct 2024 11:25:52 AM.

Choice No 1: N1 - 6-SUBJECT

- COMPULSORY 1 1st: G2-EL
- COMPULSORY 2 1st: G3-CL
 2nd: G2-CL
- COMPULSORY 3 1st: G2-MATH
 2nd: G3-MATH
- CLUSTER 1 1st: G2-SS+GEOG
 2nd: G2-SS+HIST
 3rd: G2-SS+LIT(E)
- CLUSTER 2 1st: G2-SCI(PHY,CHEM)
 2nd: G2-SCI(CHEM,BIO)
- CLUSTER 3 1st: G2-ADDITIONAL MATHS
 2nd: G2-POA
 3rd: G2-NFS
 4th: G2-P GEOG



Timeline of activities



Activity	Dates
S2 MTP – Engagement on ECG and Subject Combination	15 May
Subject Option Trial Exercise (based on Sem 1 results)	10-13 Jul
Subject Option Admin and ECG Briefing	14 Oct
Subject requirement briefing (during subject lesson time)	14 – 16 Oct
Subject Option Exercise:	
Start	20 Oct (12 noon)
End	22 Oct (8 am)*
Release of Subject Option Allocation	3 Nov (12 noon)
Appeal period	3 – 5 Nov
Release of appeal results	12 Nov
Release of Class Teaching Group	When school re-opens via ICON email

*Do note that students who did not submit the option online by the deadline will be assigned to any available option after all the allocation for all students is completed.



PAYA LEBAR METHODIST GIRLS' SCHOOL (SECONDARY)



Our Parents



PAYA LEBAR METHODIST GIRLS' SCHOOL (SECONDARY)



From Sec 2 to Sec 3...

Help our PL-Lites develop Personal Agency

Personal Agency refers to one's capability to originate and direct actions for given purposes.

PL-Lites with clear goals in mind





PAYA LEBAR METHODIST GIRLS' SCHOOL (SECONDARY)



Help our PL-Lites develop Personal Agency

Promote Consistency of Effort and Goal-Orientation

- ***Target-Setting (PL Diary) and Termly Review***
- ***Sec 2 Year-end Subject Option Combination***
- ***CCAs – NSG/SYF/Other platforms of growth***
- ***Faithful-in-Service (FIS)***

Journey with Us!



PAYA LEBAR METHODIST GIRLS' SCHOOL (SECONDARY)



SELF-EFFICACY versus AGENCY

BELIEF (one can succeed?) and CAPABILITY



PAYA LEBAR METHODIST GIRLS' SCHOOL (SECONDARY)



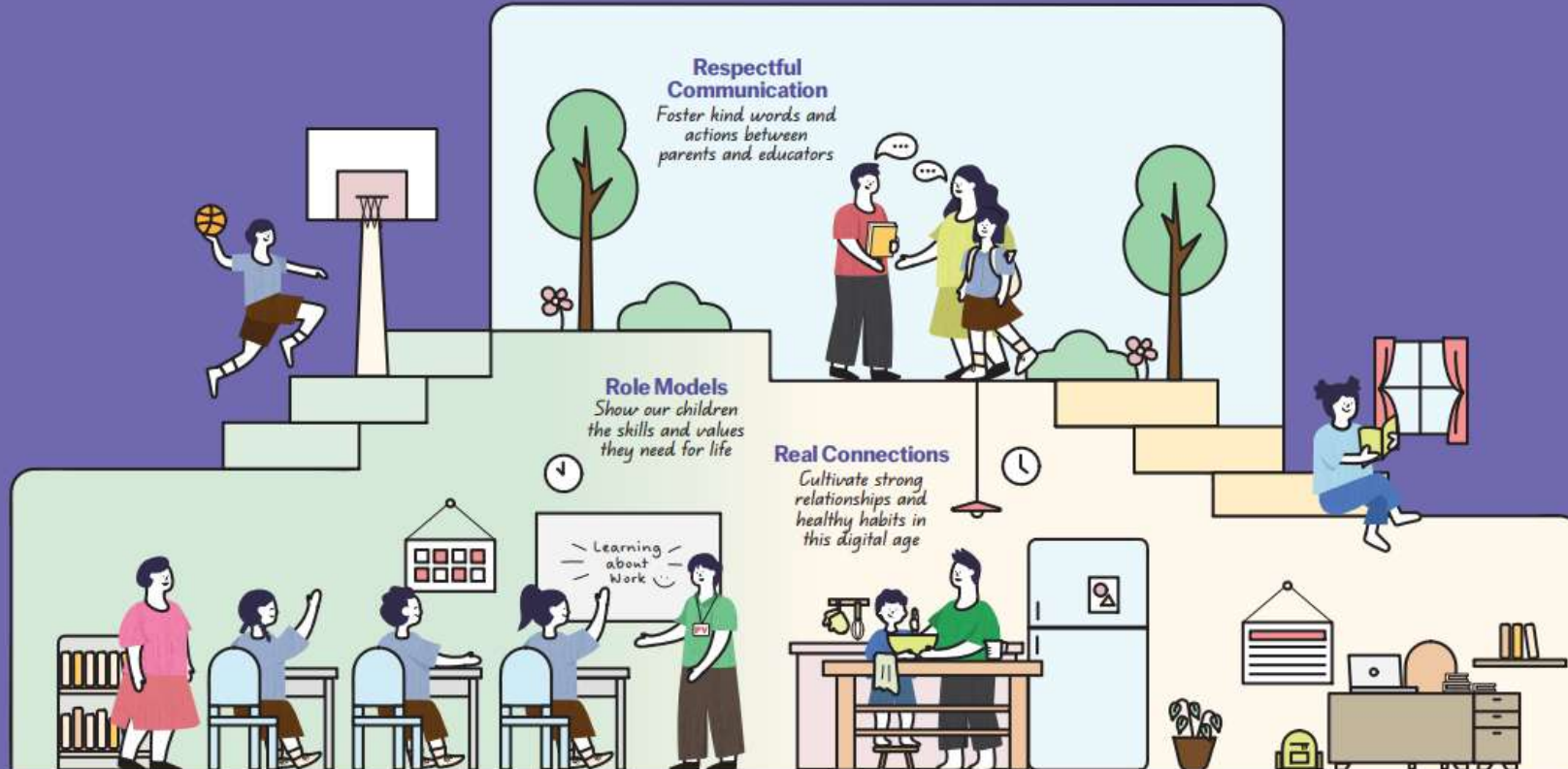
Dr Kathryn Hecht
Child psychologist
& bravery coach





Guidelines for School-Home Partnership

Raising a Happy, Confident, and Kind Generation Together





PAYA LEBAR METHODIST GIRLS' SCHOOL (SECONDARY)



Ready to let our child struggle?
Not suffer...



Respectful Communication

Foster kind words and actions between parents and educators



- Listen to and understand each other's perspectives and concerns regarding each child.
- Communicate kindly using official channels. Teachers are not required to share their personal mobile numbers.
- Respect each other's time by communicating during working hours.

Role Models

Show our children the skills and values they need for life



- Practise gratitude and find joy in everyday experiences with our children.
- Instil confidence by encouraging responsibility and believing in each child's abilities.
- Model good values in words and actions, at school and at home.

Real Connections

Cultivate strong relationships and healthy habits in this digital age



- Build strong bonds through shared experiences and meaningful conversations.
- Establish good habits for our children to stay confident and in control of their technology use.
- Provide a balanced mix of engaging online and offline activities, at school and at home.



Keep in touch with the school

Parents' Communications with School

- a) Parents Gateway
- b) Termly Principal's Letter
- c) PL Facebook & Instagram
- d) School Website announcements
- e) Letters/Consent Forms via Parents Gateway
- f) Email Comms with Staff and School



PAYA LEBAR METHODIST GIRLS' SCHOOL (SECONDARY)



Keep in touch with the school

Parents' Communications with School

<https://www.plmgss.moe.edu.sg/articles/guidelines-on-parents-communication-with-the-school>



Within school hours (7.30 a.m. – 6 p.m.), on working weekdays, and during school terms



Teachers are not expected to provide their personal mobile numbers



Urgent messages to teachers may be directed to the school's General Office



Appointments for face-to-face meetings made at least 3 days in advance



Response Time
3-7-21



There are **many routes to success.**

Explore **all possible education options** and look for one that **best fits** child's **needs, passion** and **abilities.**

It may just mean taking the road less travelled.



PAYA LEBAR METHODIST GIRLS' SCHOOL (SECONDARY)

Post-Sec Scholarships

JC/Polytechnic

- MOE Pre-University Scholarship
- Art Elective Scholarship
- MOE Humanities Scholarship
- Language Elective Scholarships
- Music Elective Scholarship
- Regional Studies Programme Scholarship
- DSTA Scholarship
- Cluster Sponsorship - Nursing (Diploma)
- Polytechnic Foundation Programme (PFP) Profession – Nursing
- Sailors' Society - MaritimeONE Scholarship
- BCA-Industry Built Environment Diploma Scholarship / Sponsorship
- Scholarships Offered by Polytechnics
- Scholarships Offered by Lasalle and NaFa

ITE

- Community Development Council & Citizen's Consultative Committee-Institute of Technical Education (CDC & CCC-ITE) Scholarship
- BCA-Industry Built Environment ITE Scholarship
- Nursing Sponsorship for NITEC in Nursing
- SingHealth Nursing Sponsorship (NITEC)
- Singapore Olympic Foundation-Peter Lim Sports Scholarship
- Industry Scholarships For ITE Courses

<https://www.plmgss.moe.edu.sg/curriculum/cce/post-secondary-scholarships/>

Unleash Your Potential
MOE Programme-Based and Special Scholarships

Scholarships for:

- Art Elective
- Music Elective
- French Language
- German Language
- Japanese Language
- Spanish Language
- Chinese Language
- English Language
- Malay Language
- Tamil Language
- Humanities
- MOE Pre-University
- Bicultural Studies Programme
- National Elective Tamil Language Programme
- Regional Studies Programme



Post-Sec Scholarships Application

Write-up and evidences required

- **JC DSA**
- **Poly/ITE EAE**

1. Candidate's Particulars
2. Academic Achievements
3. CCA Record
4. **School's Assessment of Candidate's Character**
5. **Candidate's Personal Statement**

Accompanying Documents

- Secondary Education Certificate or Results Slip
- CCA Certificate for Secondary[#]
- Character Award Certificate (where applicable)[#]

Conduct, Moral integrity, Care and Concern for others, Resilience, Ability to work in teams and Contribution to school/ community/ society



PAYA LEBAR METHODIST GIRLS' SCHOOL (SECONDARY)

Q & A

After ECG Counsellor's Sharing





PAYA LEBAR METHODIST GIRLS' SCHOOL (SECONDARY)

110NE PERFECT 10 IN CHRIST
1 CORINTHIANS 12:12

Feedback for 2026 Sec 2 MTP

SCAN ME



<https://forms.gle/npMEHdBciqnaTHnTA>