



PAYA LEBAR METHODIST GIRLS' SCHOOL (SECONDARY)

Welcome Back PL Lites!

**2025 Singapore-Cambridge
GCE N Level Examinations**

Agape Concert Hall

18 Dec 2025 THURSDAY, 2 pm





PROGRAMME

Items		By
Welcome & General Information		Mrs Low
Release of the 2025 GCE N-Level Results		Ms Amy Ng
Release of Result Slips & relevant forms & materials		Form Teachers
Break-out ECG Info Sessions:		
A	<ul style="list-style-type: none">For students who require more support in: (a) ITE course selection and application / (b) post-sec application or ECG-related queries (ACH foyer)	Mrs Low + ECG Counsellor
B	<ul style="list-style-type: none">For students taking mainly G2/NA subjects: Briefing on PFP, DPP, 3-year Higher Nitec and Sec 5 pathways (19 Dec, Fri, 8am, AVA)	Mrs Selina Lum
C	<ul style="list-style-type: none">Appeals / Review of gradesAmendments (if any) by students on documents (e.g. Certificates)	Ms Lim Lin Lin



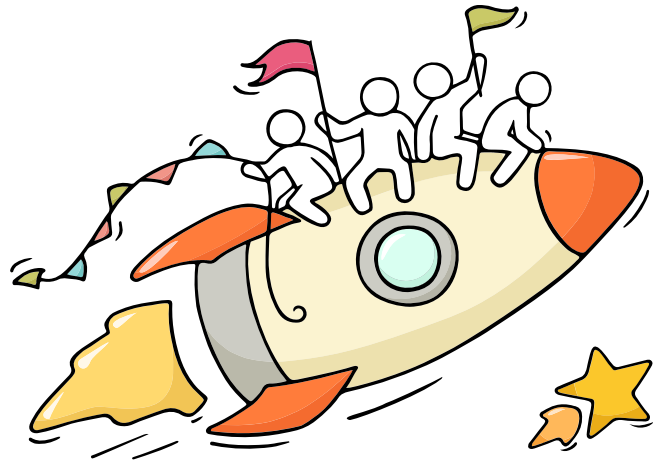
PROGRAMME

Items		By
B	<ul style="list-style-type: none">For students taking mainly G2/NA subjects: Briefing on PFP, DPP, 3-year Higher Nitec and Sec 5 pathways (19 Dec, Fri, 8am, AVA)	Mrs Selina Lum

Students who intend to continue with Sec 5 and/or PFP **MUST** attend the briefing tomorrow, **19 Dec 2025, 8am, in the AVA.**

Dear students,

You have worked hard to reach this stage. Let's celebrate your efforts!



*Finally, we are going
to get our results!*



Remember that while everyone's educational journey is different, we can each have a fulfilling outcome!



Concerned about your next steps?

Stop

- Calm yourself down. Take a few deep breaths.

Think

- Think through the different options that are available for you.
- Remember that the N-Level is not the end point and is only one part of your life journey.

Do

- Have conversations with trusted adults who know you well to advise and guide you (parents, teachers, ECG Counsellor).
- Decide and act based on your options.

When you receive your results, you may experience a range of emotions.

Managing these emotions well will allow you to stay calm and make rational decisions.

Resources to support you as you receive your results

Receiving your results and making decisions about your post-secondary pathways can be exciting to some, but stressful to others.

Scan this QR code for an infographic with some helpful resources to support you.



<https://go.gov.sg/nlevelstudentresource>



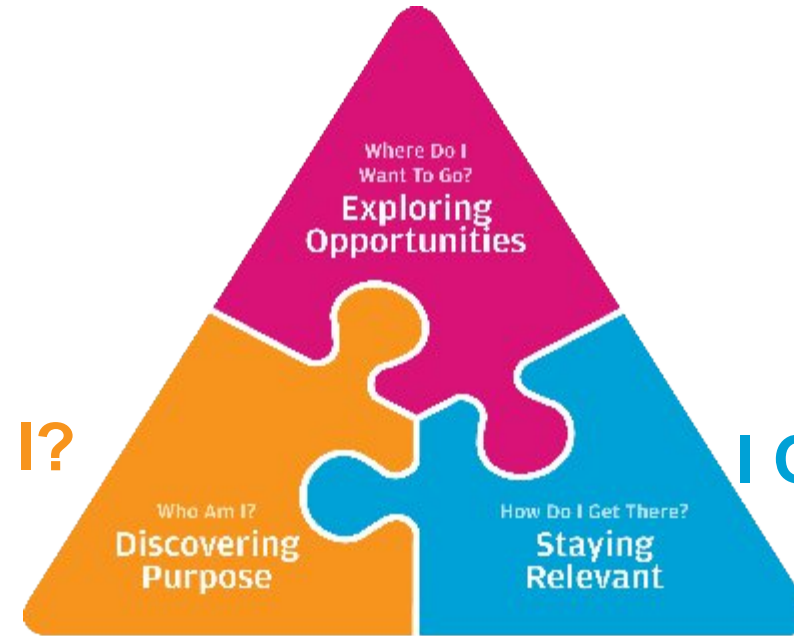
Thinking about Your Next Step?

Consider these questions...

Where do I want to go?

Who am I?

How Do I Get There?



In the infographic, you can find resources which can help you make informed decisions.

PLANNING YOUR NEXT STEP

These resources will help you chart your path ahead:



• What's Next Brochure

<https://go.gov.sg/whats-next-nlevel>



• Contact the ECG Centre @ MOE

<https://go.gov.sg/moe-ecg-centre>



• MySkillsFuture Student Portal

<https://go.gov.sg/MySFSec>







• Chat with your school's ECG Counsellor

Resources to help you make informed decisions



PLANNING YOUR NEXT STEP

These resources will help you chart your path ahead:

-  • What's Next Brochure
<https://go.gov.sg/whats-next-nlevel>
-  • Contact the ECG Centre @ MOE
<https://go.gov.sg/moe-ecg-centre>
-  • MySkillsFuture Student Portal
<https://go.gov.sg/MySFSec>
-  • Chat with your school's ECG Counsellor



MySkillsFuture Student Portal

Use the information and tools to explore various education and career pathways and take charge of your future.

Resources to help you make informed decisions

Post-Secondary Education

Learn more about the
admissions exercises
and programmes



<https://www.moe.gov.sg/post-secondary/admissions>

Learn more about the
post-secondary
education institutions



<https://go.gov.sg/overview-pseis>

<https://moe.gov.sg/post-secondary/overview>

Details of Admissions Exercises

You can find the details of the various admissions exercises from the **Post-Secondary Admissions Exercises booklet** that can be downloaded from:

<https://www.moe.gov.sg/post-secondary/admissions>

- DPP
- PFP
- Joint Intake Exercise 'N' / 'E'
- NAFA Foundation Programme





Admissions exercises to take part in

Students in Sec 4N(T)

Eligible students may also laterally transfer to Secondary 4N(A) to take the N(A)-Level examinations. Applications can be made via your secondary school.

ITE EAE¹

JIE 'N' / JIE 'E'

Institute of Technical Education (ITE)
(Enhanced Foundation Programme or 3-year Higher Nitec[^])

Students in Sec 4N(A)

Eligible students may also progress to Secondary 5 to take the O-Level examinations. Applications can be made via your secondary school.

PFP

Polytechnic

ITE EAE¹

JIE 'N'

Institute of Technical Education (ITE)
(3-year Higher Nitec[^])

DPP

Institute of Technical Education (ITE)
(2-year Higher Nitec^{^^})

NFP

Nanyang Academy of Fine Arts (NAFA)



For more information on applying to these courses, you can visit <https://www.moe.gov.sg/post-secondary/admissions>

For the list of 3-year Higher Nitec courses, please visit <https://www.ite.edu.sg/secondary-school-students/ite-full-time-courses/3-year-4-year-higher-nitec/>

Details of Admissions Exercises



Details of Admissions Exercises

DPP – Direct-Entry-Scheme to Polytechnic Programme

DPP allows Secondary 4N(A) students to be admitted directly into selected 2-year Higher Nitec courses at ITE without having to sit for the O-Level examinations. DPP students who successfully complete their Higher Nitec courses at ITE and attain the required qualifying Grade Point Average (GPA) scores are guaranteed a place in a polytechnic diploma course mapped to their Higher Nitec course.

DPP: go.gov.sg/applydpp

PFP – Polytechnic Foundation Programme

PFP is a one-year programme that offers a practice-oriented curriculum taught by polytechnic lecturers to better prepare polytechnic-bound Secondary 4N(A) students for entry into a polytechnic diploma.

Starting from the AY2026 PFP intake, students will be admitted into a PFP cluster, and progress to one of the diplomas within the cluster after completing the one-year programme.

The exceptions are Diploma in Nursing, Diploma in Early Childhood Development & Education, and Diploma in Tamil Studies with Early Education, for which students can be admitted either via the diploma-specific PFP or the relevant PFP cluster.

PFP: go.gov.sg/pfp

JIE 'N'/JIE 'E' – Joint Intake Exercise

The JIE 'N' is for students to apply for the 3-year Higher Nitec courses offered by ITE.

The JIE 'E' is for eligible¹ GCE N(T) students to apply for the 4-year Higher Nitec course under the Enhanced Foundation Programme.

JIE 'N'/JIE 'E': go.gov.sg/applyjien

ITE EAE – ITE Early Admissions Exercise

ITE EAE is an aptitude-based admissions exercise that allows students to apply and receive conditional offers for admission to ITE based on their aptitude and interest, prior to receiving their final GCE N-Level examination results. It allows students to demonstrate their aptitudes and interests apart from academic grades, thus allowing a wider range of talents to be recognised.

ITE EAE: go.gov.sg/iteeae

NFP – NAFA Foundation Programme

The NFP is a one-year practice-based programme that prepares Secondary 4N(A) students to pursue a diploma in the creative arts. NFP students who successfully complete the programme will be offered a place in their chosen diploma course at NAFA.

NFP: go.gov.sg/applynafafp

NEW

**Polytechnic Foundation Programme (PFP)
will be cluster-based in 2026**

#

*JOIN US FOR THE
PFP WEBINAR*

Fri, 19 Dec, 5pm - 6pm



Scan to join
or visit nyp.edu.sg/pfp-webinar

#

About Discover On My Way (D:OMW)

Discover your education and career interests and chart your personal and professional future with **Discover On My Way!** Explore different careers, connect with industry professionals and peers, and get firsthand exposure at various job roles. Let's get you on your way to discovering!

[Join Programmes!](#)

We know – deciding on which course to take and what career to pursue isn't easy... Through programmes organised by NYC and our partners, you'll be able to meet professionals from various industries and youth on the same journey as you.



Outward Bound Job Taster



Esports Events Management
Job Taster




Career conversation and discovery



Reaching out for support is a sign of strength

If you have questions about your options or are not coping well, you can reach out to trusted adults such as a parent/guardian, teacher, School Counsellor or ECG Counsellor. You can also talk to a trusted friend.



*Who can we
go to for ECG
advice?*

Make an appointment to speak with
your ECG Counsellor in school

OR

Make an ECG counselling
appointment via the
ECG Centre @ MOE

<https://go.gov.sg/moe-ecg-centre>





ECG SUPPORT AT PLMGSS

Online or Face to Face Session with Ms Lim Hui Ching, ECG Counsellor

Ms Lim Hui Ching will be available from tomorrow onwards for ECG Counselling

Book an Appointment : <https://go.gov.sg/plmgss-ecg>

Support by School

Mrs Low Hwee Hwee, HOD CCE / Mdm Zetty, YH

Email: oh_hwee_hwee@moe.edu.sg / nur_zetty_abd_kadir@moe.edu.sg

Online or Phone Counselling by MOE ECG Centre

Contact : 6831 1420

Email: MOE_ECG@moe.gov.sg or

Book an Appointment : <https://go.gov.sg/moe-ecg-centre>

'N' Level support by ITE

ITE College Central | Tel: 1800 222 2111 | college_central@ite.edu.sg

ITE College East | Tel: 6590 2262 | college_east@ite.edu.sg

ITE College West | Tel: 6590 2628 | college_west@ite.edu.sg

Before the Session

- Do your course exploration and shortlisting
- Jot down any questions you might have
- Find out your CCA grade

Please have these ready for the ECG session

- Result Slip & Form N
- Prelim Result Slip if you are taking O level subject(s)

Having difficult emotions during a stressful and uncertain period is normal. Keep a look out for some of these signs:

**Keep a lookout for
some of these signs in
your peers or in
yourself**

*How can we
support one
another?*



**D
I
S
T
R
E
S
S**

Deliberately avoiding others

Increased irritability, restlessness, agitation, stress and anxiety

Sending or posting moody messages on social media

Talking about death or dying

Reacting differently or gradually losing interest in things they used to like

Eating more than usual or having a much reduced appetite

Sleep pattern changes with difficulty falling asleep or oversleeping

Slowing down of energy levels

If you notice any of these signs in yourself or your friends,
have a chat with your School Counsellor or teacher,

Or contact SOS 24-hour hotline at **1767** or SOS 24-hour CareText Whatsapp at **91511767**
For cyber wellness related matters, call Help123 at **1800-612-3123*** or email **hello@help123.sg**

**available only from Mon to Fri (excluding Public Holidays), from 9am - 6pm.*



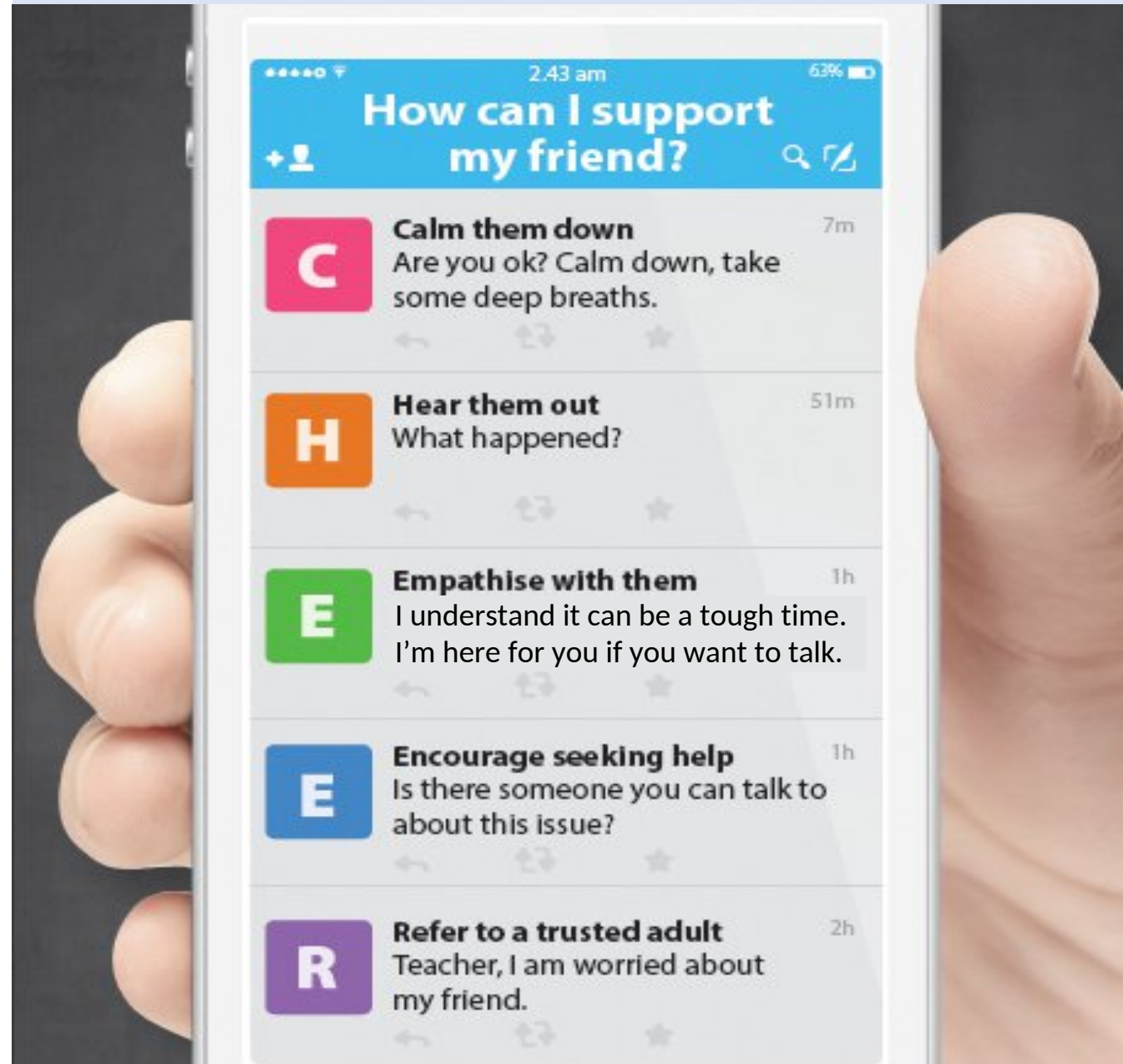
© 2023 Guidance Branch, Student Development Curriculum Division (SDCD), Ministry of Education, Singapore. No part of this final product may be reproduced or transmitted in any form or by any means, electronic or mechanical, including photocopy, recording or any other information storage and retrieval system, without written permission from SDCC, MOE.

Supporting Your Friend

- We may each experience different emotions upon receiving the results.
- You can share your friends' joy by congratulating them.
- If your friends appear to be disappointed with their results, encourage them.
- Alert a teacher if you are worried for them.



Keep a lookout for your friends in distress. You can support them in the following ways:



Support is readily available for you.

There are other hotlines and chats available if you are more comfortable seeking help using these platforms. These can also be found in the infographic which you accessed earlier.



SOS provides round-the-clock emotional support for those in distress, thinking of suicide or affected by suicide.

Call: **1767**
(24-hour helpline)

Whatsapp: **9151 1767**
(24-hour Care Text)

Community Health Assessment Team (CHAT) provides personalised and confidential mental health checks and consultation for youths. To speak with a youth support worker, you can:

Visit: **CHAT Hub at *Scape, 2 Orchard Link, #04-01A**

Call: **6493 6500/ 6501**

Email: **CHAT@mentalhealth.sg**

mindline.sg is an online platform that provides tools, tips and resources to help you manage your health and well-being. Find out more at:
www.mindline.sg



TOUCHline is a helpline to provide youths with emotional support and practical advice.

Call: **1800-377 2252**

Monday- Friday (Excluding Public Holidays):
9am – 6pm

Carey is an online platform by Care Corner that provides free mental health check-ins with mental health professionals. Find out more at:
<https://carey.carecorner.org.sg/>

eC2 is an e-Counselling Centre where you can talk to a trained counsellor about the issues you are facing, right where you are.

Chat with a counsellor at:

www.ec2.sg

Monday – Friday (Excluding Public Holidays):
10am – 12pm & 2pm – 5pm

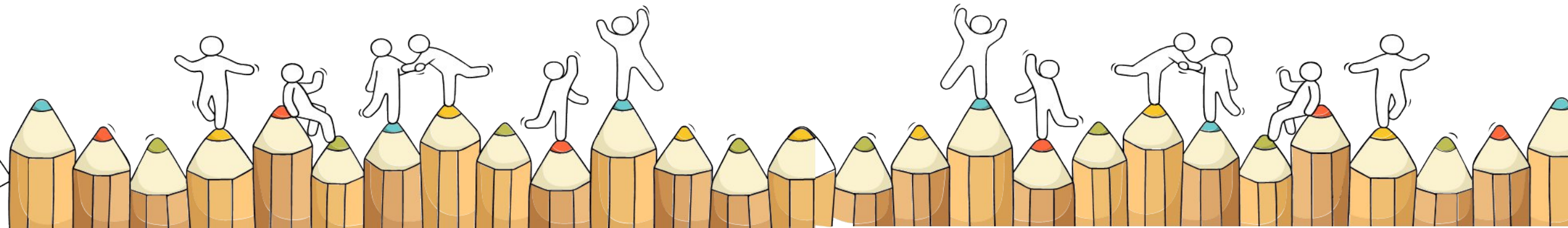


**The N-Level
examination is not
the end point.**








**It is part of your
education journey.**

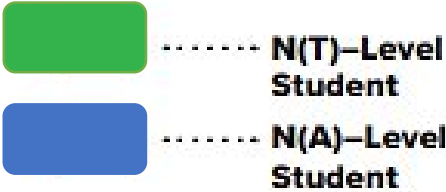
Admission Exercises

Key Things to note



Application Timeline

Admissions Exercises	JIE 'N'			PFP	
	JIE 'E'			DPP	
	NFP				
	DPP				
	(1 st window of applications)			(2 nd window of applications)	
Application Period	Dec 2025			Jan 2026	





NEXT STEP AFTER N-LEVELS

Tertiary Education

1. **Enhanced Higher Nitec Foundation Prog** – For students taking mainly NT/G1 subjects only
2. **3-Year Higher Nitec** – For both students taking mainly NT/G1 and NA/G2 subjects
3. **2-Year Higher Nitec (DPP)** – For students taking mainly NA/G2 subjects only



**Diploma
Polytechnic
Foundation
Programme**



**Diploma
NAFA
Foundation
Programme**



Secondary Education

1. **Secondary 5 (O-levels)** for students taking mainly NA/G2 subjects
2. **Lateral Transfer to NA/G2** for students taking mainly NT/G1 subjects



- Appeal-based
- Subject to MOE criteria and approval



PROGRESSION PATHWAYS FOR 4NA/G2

No	Item	Eligibility Criteria	Remarks
1	Polytechnic Foundation Programme (PFP)	ELMAB3 \leq 12 (Excl CCA bonus pts) + cluster entry requirement	Apply when O-levels results are released in mid Jan 2026
2	Direct-Entry-Scheme to Poly Prog (DPP) – 2-Year Higher NITEC	ELMAB3 \leq 19 (Excl CCA bonus pts) + course entry requirement	Application from 2.30 pm (Today) – 22 Dec 2025 (Mon), 5 pm
3	Progression to ITE for 3-Year Higher Nitec courses	ITE points calculated from best 4 subjects including prerequisite subjects (if any) stated in ITE brochure + minimum entry requirements (course-specific)	Application from 2.30pm (Today) – 22 Dec 2025 (Mon), 5 pm



PROGRESSION PATHWAYS FOR 4NA/G2

No	Item	Eligibility Criteria	Remarks
4	Sec 5NA	ELMAB3 \leq 19 (Excl CCA bonus pts) and at least a grade 5 for all subj used in the computation of ELMAB3	
5	NAFA Foundation Programme (NFP)	ELMAB3 \leq 15 (Excl CCA bonus pts) Applicants who score 4 and above in English Language will be required to attend an interview.	Application from 19 Dec 2025 – 26 Dec 2025 Please apply DIRECTLY on NAFA Website



FOR ALL 4 NA/G2 STUDENTS

ONLY: time frame:	Action to be taken
Submit by 22 Dec	Complete and submit the Google form which will be send to you to indicate your choice of pathway. You must report to school on 2 Jan 2026 even if you are applying for PFP.



**ALL students MUST
COMPLETE and submit
the Google form**

<https://form.gov.sg/6940dc75e1550df3d5381459>



PROGRESSION PATHWAYS FOR 4NT/G1

No	Item	Criteria	Remarks
1	Progression to ITE for 3-Year Higher Nitec courses	ITE points calculated from best 4 subjects including prerequisite subjects (if any) stated in ITE brochure + minimum entry requirements (course-specific)	Application from 2.30pm (Today) – 22 Dec 2025 (Mon), 5 pm
2	Enhanced Higher Nitec Foundation Programme (EFP) 1+3 = 4 yrs in ITE	0 or 1 N-level pass only [Only 3 courses to choose from]. <i>Eligible students will receive a letter.</i>	Application from 2.30pm (Today) – 22 Dec 2025 (Mon), 5 pm
3	Transfer to 4NA	<ul style="list-style-type: none">• Grade A for both EL & MA and• Grade B or better for 1 other sub	Subject to approval from MOE



DOCUMENTS GIVEN OUT TODAY

SINGAPORE-CAMBRIDGE GENERAL CERTIFICATE OF EDUCATION
ORDINARY LEVEL
RESULT SLIP

YEAR OF EXAM
CANDIDATE
NRIC/FOREIGN IDENTIFICATION NO
SCHOOL
INDEX NO

SUBJECT	GRADE NUMERICAL	GRADE ALPHABETICAL	LANGUAGE MEDIUM	EXAMINING AUTHORITY
ENGLISH LANGUAGE	THREE	B	ENGLISH	CAMBRIDGE
COMBINED HUMANITIES	THREE	B	ENGLISH	CAMBRIDGE
GEOGRAPHY	FOUR	B	ENGLISH	CAMBRIDGE
MATHEMATICS	SEVEN	D	ENGLISH	CAMBRIDGE
SCIENCE(CHEMISTRY, BIOLOGY)	SIX	C	ENGLISH	CAMBRIDGE
PRINCIPLES OF ACCOUNTS	THREE	B	ENGLISH	CAMBRIDGE
CHINESE	FIVE	C	CHINESE	SINGAPORE
CHINESE (ORAL/AURAL)	PASS	-	CHINESE	SINGAPORE

NO. OF SUBJECTS RECORDED : 7
NO. OF SUBJECTS GRADED 6 OR BETTER : 6
SERIAL NO : 00818
EX 234 (REV 2017) THIS IS NOT A CERTIFICATE. PLEASE REFER TO EXPLANATORY NOTES ON THE REVERSE SIDE.

Result Slip

PAYA LEBAR METHODIST GIRLS' SCHOOL (SECONDARY)

CCA Certificate for Secondary
For Year 2017

Name
Class

Leadership	Enrichment	Achievement	Participation	Service	Total Points	Grade	Bonus Points
1	4	10	7	5	27	A1	2

Cs-Curricular Activities Summary

CCA	Event	Involved Name	Year	L	E	A	P	S
NPCC	Competition	Member	2013					1
	Area 5 Challenge Shield	Represented School At Inter School Competition Organized By UIC HD	2013			1		
	Area 5 Challenge Shield	Won 1st Placing / Gold Award At Inter School Competition Organized By UIC HD	2013				3	
PHOTOGRAPHY CLUB	Member		2014					1
			2015					1
			2016					1
			2017					1
	Montage 2015 by NUS Photographic Society	Represented School At Local Competition/Exhibition	2015			2		
	School Events e.g School Concerts / Musicals, Sports Day, etc	Participated in Intra-School Activities	2014					
	School Events e.g School Concerts / Musicals, Sports Day, etc	Participated in Intra-School Activities	2015					
	Singapore Student Photography Conference 2016	Represented School At Local Competition/Exhibition	2016				3	
	WWF National Competition	Represented School At Local Competition/Exhibition	2017			4		
		Club's & Societies Committee Member	2016			1		
OTHER SPECIAL EVENTS	ACES Day	Participated in Intra-School Activities	2013					

CCA Cert

MINISTRY OF EDUCATION
REPUBLIC OF SINGAPORE

UNIVERSITY of CAMBRIDGE
International Examinations

SINGAPORE-CAMBRIDGE GENERAL CERTIFICATE OF EDUCATION
ORDINARY LEVEL

This certifies that the candidate named below sat the Singapore-Cambridge General Certificate of Education Ordinary Level Examination conducted by the Ministry of Education, Singapore, the University of Cambridge International Examinations and the Singapore Examinations and Assessment Board and obtained the following results:

YEAR OF EXAM
CANDIDATE
NRIC/FOREIGN IDENTIFICATION NO.
SCHOOL
INDEX NO

SUBJECT	GRADE Alphabetical	GRADE Numerical	LANGUAGE MEDIUM	EXAMINING AUTHORITY
ENGLISH LANGUAGE	B	THREE	ENGLISH	CAMBRIDGE
COMBINED HUMANITIES	B	THREE	ENGLISH	CAMBRIDGE
GEOGRAPHY	B	FOUR	ENGLISH	CAMBRIDGE
MATHEMATICS	D	SEVEN	ENGLISH	CAMBRIDGE
SCIENCE(CHEMISTRY, BIOLOGY)	C	SIX	ENGLISH	CAMBRIDGE
PRINCIPLES OF ACCOUNTS	B	THREE	ENGLISH	CAMBRIDGE
CHINESE	C	FIVE	CHINESE	SINGAPORE
CHINESE (ORAL/AURAL)	-	PASS	CHINESE	SINGAPORE

Number of Ordinary Level Subjects Recorded: SEVEN
Number of Subjects graded 6 or better: SIX

Director-General of Education
Singapore

Vice-Chancellor
University of Cambridge

428753 /2017
(see overleaf)

Results Cert

Form N

FORM N

NRIC/FOREIGN IDENTITY NO:
SCHOOL CODE AND INDEX NO:

FOLD AND TEAR ALONG PERFORATED LINE



TAKE NOTE

Check that your personal particulars
(such as statutory names and Hanyu
Pinyin names) are printed

CORRECTLY

on your results slips



APPEAL FOR REVIEW OF RESULTS

- Please see [Ms Lim Lin Lin](#) for the relevant forms
- Outcome of the Individual Appeal is expected to be released to schools by **27 Jan 2026**
- Submission to office by Friday, **19 Dec 2025, 3 pm**
- Cost is **\$114.45** per subject
- Proceed only if you have very **STRONG** grounds for appeal



WHAT DO I HAVE TO DO?

1. Check Results Slip and Form N
2. List eligible PFP/DPP/ITE courses and choice of campus
3. Calculate points based on selected courses
4. Take note of course criteria
5. Take note of timelines for different phase of applications
6. Ensure that your personal particulars (**valid email address, mobile number, residential address**) are updated for the application of courses online. Your email address will be used to provide you with details of your application and your Enrolment Letter (if successful).



FORM N

Refer to ITE admission and course brochure for 3-year Higher Nitec course codes or for DPP course codes

Course Code FPECE = (Electronics Engineering)

College Code CC-AM, CE-SM, CW-CK

2024 JOINT INTAKE EXERCISE (GCE 'N' LEVEL) FOR ITE COURSES FORM N

Based on your GCE 'N' level examination results, you are eligible to apply for the ITE courses listed below.

Joint Intake Exercise 'H' Full-time Higher Nitec Courses
(2-Year with 10 Weeks Preparatory Course) under Direct-Entry-Scheme to Polytechnic Programme (DPP)

Course	College	Course	College	Course	College	Course	College
FPACC	CC-AM	FPCHT	CE-SM	FPIAD	CE-SM	FPMCE	CW-CK
FPACC	CE-SM	FPCSE	CE-SM	FPIAD	CW-CK	FPMCE	CC-AM
FPACC	CW-CK	FPECE	CC-AM	FPIAG	CC-AM	FPMCE	CE-SM
FPBIS	CE-SM	FPECE	CE-SM	FPIGN	CC-AM	FPMCE	CW-CK
FPBNS	CC-AM	FPECE	CW-CK	FPIGN	CE-SM	FPNST	CC-AM
FPBNS	CE-SM	FPELE	CE-SM	FPIGN	CW-CK	FPNST	CE-SM
FPBNS	CW-CK	FPELE	CW-CK	FPLIT	CE-SM	FPNST	CW-CK
FPBSC	CW-CK	FPHPO	CW-CK	FPLTO	CW-CK		
FPBSE	CC-AM	FPIAD	CC-AM	FPMCE	CC-AM		

Joint Intake Exercise 'N'
Full-Time 3-year Higher Nitec and 2-year Nitec courses

Course	College	Course	College	Course	College	Course	College	Course	College
HF3AC	CC-AM	HF3EC	CC-AM	HF3PS	CC-AM	NFATV	CW-CK	NFMTZ	CC-AM
	CE-SM	HF3EC	CE-SM	HF3PS	CE-SM	NFATZ*	CC-AM	NFMTZ	CE-SM
	CW-CK	HF3EC	CW-CK	HF3RB	CC-AM	NFBEM	CE-SM	NFMTZ	CW-CK
	CC-AM	HF3EV	CC-AM	HF3RB	CE-SM	NFBEM	CW-CK	NFPBZ*	CW-CK
	CW-CK	HF3FS	CE-SM	HF3RB	CW-CK	NFBEV	CE-SM	NFPRD*	CC-AM
	CC-AM	HF3HS	CE-SM	HF3SI	CE-SM	NFDAN*	CC-AM	NFRTZ	CW-CK
								NFUGL	CE-SM
								NFVCZ*	CC-AM

Eligibility does not guarantee placement

Posting is subject to competition based on merit and availability of places.

Hence, we strongly encourage students taking mainly NA/G2 subjects to apply for DPP/Higher Nitec courses first, and for all to make good use of all 12 choices.

ITE Institute of Technical Education

FORM N


NRIC/FOREIGN IDENTITY NO: _____

SCHOOL CODE AND INDEX NO: _____

HOLD AND TEAR ALONG PERFORATED LINE

Key Information For Students

The information listed in the table below will help you to make an informed decision on which choice of PFP/DPP/3-year Higher Nitec courses you could consider applying.

S/N	Information	Attachment/Link
1	ITE Factsheet 2025	 2025 JIE Factsheet
2	ITE Course Booklet 2026	ITE-Course-Booklet-2025.pdf
3	Application for full-time 3-year Higher Nitec courses / 2-year DPP courses	Intake exercises Institute of Technical Education (https://www.ite.edu.sg/intake-exercises/)
4	ITE Admission and Course Brochure for Jan 2026 JIE	Application for GCE 'N' Level students Institute of Technical Education (https://www.ite.edu.sg/secondary-school-students/admissions/entry-qualifications/gce-n-level/)

Key Information For Students

The information listed in the table below will help you to make an informed decision on which choice of PFP/DPP/3-year Higher Nitec courses you could consider applying.

S/N	Information	Attachment/Link
5	Information on Progression Opportunities (from <i>Higher Nitec</i> courses to Technical / Work-Study diploma courses)	https://www.ite.edu.sg/secondary-school-students/admissions/academic-progression/academic-progression-from-full-time-higher-nitec/
6	Key information on PFP	PFP Joint Admissions Exercise – Application (https://pfp.polytechnic.edu.sg/PFP/pfp_application.html) PFP Joint Admissions Exercise – Eligibility Criteria (https://pfp.polytechnic.edu.sg/PFP/pfp_eligibility.html) PFP Joint Admissions Exercise – Courses (https://pfp.polytechnic.edu.sg/PFP/pfp_courses.html)



TAP INTO FUTURE-READY SKILLS

ADMISSION & COURSE INFORMATION
BROCHURE FOR JANUARY 2026
JOINT INTAKE EXERCISE (JIE)
FOR FULL-TIME COURSES



NOTE TO GCE 'N' LEVEL HOLDERS

Congratulations to all GCE 'N' Level holders for completing your secondary school education! You will receive a Form N, showing the list of full-time ITE courses you are eligible to apply based on your GCE 'N' Level results, through your school on the day when the 2025 GCE 'N' Level examination results are released, if you have sat for the examination as a school candidate.

Now you can begin your journey to a successful career by enrolling in ITE's post-secondary courses. With a wide range of courses to choose from, in Business & Services, Design & Media, Electronics & Info-Comm Technology, Engineering, Health Sciences and Hospitality, you can be certain of finding one that is right for you.

Application Details

To apply and find out more information about the ITE JIE, please scan the QR Code below:



<https://for.edu.sg/apply>



MINIMUM ENTRY REQUIREMENTS

S/N	3-Year <i>Higher Nitec</i> Course	Course Code	College Code	2025 JIE 'N' ITE Aggregate Score* based on 4 Subjects	Entry Requirements
1	Nursing [^]	HF3NS	CE-SM	13	3 GCE 'N' Passes (Grade A – D or Grade 1 – 5) in English Language, Mathematics and one other subject OR 2 GCE 'O' Grades (Grade 1 – 8) in any two subjects
2	Electrical Engineering [#]	HF3EE	CE-SM CW-CK	16 11	3 GCE 'N' Passes (Grade A – D or Grade 1 – 5) in Mathematics and two other subjects OR 2 GCE 'O' Grades (Grade 1 – 8) in any two subjects
3	Accounting	HF3AC	CC-AM CE-SM CW-CK	5 6 6	3 GCE 'N' Passes (Grade A – D or Grade 1 – 5) in English Language and two other subjects OR 2 GCE 'O' Grades (Grade 1 – 8) in any two subjects
4	Business Administration	HF3BA	CC-AM CE-SM CW-CK	3 6 3	
5	Customer Experience			3	
6	Event Management				
7	Hospitality Operations [^]				3 GCE 'N' Passes (Grade A – D or Grade 1 – 5) in English Language and two other subjects OR 2 GCE 'O' Grades (Grade 1 – 8) in any two subjects
8	Passenger Services				

Do look at the 2025 ITE Aggregate and minimum entry requirements when making your choices



ITE AGGREGATE POINTS

Computation of ITE Aggregate Points for Normal (Technical) Subjects

Normal (Technical) Grade	ITE Aggregate Points
A	1
B	2
C	3
D	4
E / U	5

Computation of ITE Aggregate Points for Normal (Academic) Subjects

Normal (Academic) Grade	ITE Aggregate Points
1, 2, 3	1
4	2
5	3
6 / U	4



BONUS POINTS

CCA Bonus Points

The table below provides details for the computation of bonus points available. Please note that these bonus points are not taken into account when considering whether applicants are eligible for courses. The bonus points will only come into effect when the applicant has been deemed eligible and is being considered for posting based on merit.

Applicant's CCA Grade	Points Awarded
Excellent or Grade A1 – A2	2
Good or Grade B3 – C6	1



WHEN MAKING YOUR CHOICES

12 choices

- **First 3 to 4 choices** - courses that most align with your passion, interests, skills
- **Next 3 to 4 choices** - courses that you are interested in and stand a good chance)
- **Remaining choices** - courses which cut-off points are highest than your aggregate

PASSION

Practical

Prudence

Key Dates for Jan 2026 Intake Exercise

Key Activity	Period for 3-Year and 4-year Higher Nitec / DPP courses	Remarks
1st Phase (Main Phase)		
Application	18 Dec 2025 (2.30pm) to 22 Dec 2025 (5pm)	Apply through the Internet at https://www.ite.edu.sg with SingPass.
Release of Results	26 Dec 2025	Check results at https://istudent.ite.edu.sg with web ID and password
Acceptance of Course Offer Period	26 Dec 2025 to 2 Jan 2026	Accept course offer at https://istudent.ite.edu.sg with web ID and password
2nd Phase (Late Application/Appeal Phase)		
Application	26 Dec 2025 to 2 Jan 2026	Apply through the Internet at https://istudent.ite.edu.sg with SingPass.
Release of Results	6 Jan 2026	Check results at https://istudent.ite.edu.sg with web ID and password
Acceptance of Course Offer Period	6 Jan 2026 to 9 Jan 2026	Accept course offer at https://istudent.ite.edu.sg with web ID and password
3rd Phase (Final Top-up Phase)		
Application	1 st Top-up Phase Application - 9 Jan to 16 Jan 2026 2 nd Top-up Phase Application - 22 Jan to 6 Feb 2026	Apply through the Internet at https://istudent.ite.edu.sg with SingPass.
Release of Results	1 st Top-up Phase - 12 Jan to 22 Jan 2026 2 nd Top-up Phase - 22 Jan to 11 Feb 2026	Check results at https://istudent.ite.edu.sg with web ID and password
Acceptance of Course Offer Period	1 st Top-up Phase - 12 Jan to 22 Jan 2026 2 nd Top-up Phase - 22 Jan to 11 Feb 2026	Accept course offer at https://istudent.ite.edu.sg with web ID and password

Jan 2025 Intake Term Commencement Date: 12 Jan 2026

Online Application for

3-Year Higher Nitec Courses

4-year Higher Nitec Course with EFP

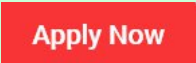
(for N(T) students with 0, 1 “N” pass)


1. Go to <https://www.ite.edu.sg>.

2. Click



icon.

3. Under JIE ‘N’, click  icon to link to the application website

Under JIE ‘E’, click  icon to link to the application website

4. At the application website:

- a) Use your Singpass to access the application portal.
- b) Upon completion of application, applicants will receive their web ID and password.

Checking of Posting Results/Accept Course Offer

3-Year Higher Nitec Courses

4-year Higher Nitec Course with
EFP

(for N(T) students with 0, 1 "N" pass)

1. Go to <https://istudent.ite.edu.sg>.
2. Enter web ID and password.
3. Click '**Self-Service**' followed by '**Student Admission**' followed by '**View Application Results**' to view the application results and to accept course offer.

The above steps applies to all phases (refer to Slide 41 for dates).
For more details, please refer to ITE website.

Key Pointers for Students on ITE's Joint Intake Exercise (JIE)

ALL students in N(T) and N(A) students (who are not progressing to 5N(A) or repeating 4N(A)) are eligible for JIE.
Those who were unsuccessful in EAE are also eligible for JIE.

Apply in the 1st JIE main phase in December.

Use all 12 JIE choices wisely, as competition for 3-year Higher Nitec courses is keen!

Do consult your teachers / ECG counsellors to help you make your choices!

Do use the Last Aggregate Score (LAS) published in ITE's admission portal to help you make your course choices.

You are eligible for Enhanced Foundation Programme (EFP) if you receive an invitation letter to the EFP addressed to you and a copy of invitation letter for your parent/guardian.

If you are eligible for EFP, make sure you apply for both the 4-Year and 3-Year Higher Nitec Course.

The EFP helps to build the necessary literacy and numeracy foundations!

If you are counter-offered a course, accept it first to secure a place in ITE, before appealing for another course you may be more interested in!



If you've already accepted your EAE offer, you will NOT be eligible for JIE.

Do note that your results MUST meet the Minimum Entry Requirements of the course.



ITE SCHOLARSHIPS, AWARDS & BURSARIES



Institute of Technical Education

[Student Login](#) [Staff Login](#) [Employer Login](#) [eServices & Forms](#)

[Secondary school students](#) [Current full-time students](#) [Adult learners](#) [Alumni](#) [Employers](#) [About ITE](#)



[Home](#) > [Current full-time students](#) > [Scholarships, Awards & Bursaries](#)

Scholarships, Awards & Bursaries

Recognition of students achievements.

Last updated 29 August 2025

ITE offers attractive scholarships and awards for students who have excelled academically, achieved outstanding performance in their co-curricular activities (CCAs) and demonstrated strong leadership potential or artistic and sporting talent. In addition, we also have a wide-range of bursaries available for our students.



ITE Progression Award

ITE Progression Award (IPA)



- On graduation from ITE, those who wish to pursue a diploma may be eligible for the IPA.
- Top-up of \$5000 to Post-Secondary Education Account upon enrolment in eligible diploma
- Top-up of \$10,000 to CPF Ordinary Account upon completion of diploma.
- Learn more from <https://go.gov.sg/ite-progressionaward>



<https://go.gov.sg/ite-progressionaward>



PFP Study Awards/Scholarships

Polytechnic	Application <u>by invitation only</u>	Eligibility
NP	After 1 st semester	Top students with highest GPAs during Semester 1 of PFP
NYP	February	Net ELMAB3 \leq 6, Good CCA record
RP	During 1 st semester (April)	Gross ELMAB3 \leq 8, Excellent CCA record
SP	February	Good N-level results and CCA record
TP	February	Net ELMAB3 \leq 11, Good CCA record

***Open to Singapore Citizens / Singapore PRs only**



PAYA LEBAR METHODIST GIRLS' SCHOOL (SECONDARY)

MRS LEE SIEW CHOO EDUCATION AWARD

Official (Closed) / Sensitive (Normal)





The Background

- Mrs Lee Siew Choo was the Principal of Paya Lebar Methodist Girls' School (Secondary) from 1998-2009.
- The Mrs Lee Siew Choo Education Award aims to provide continuing support for financially needy old girls from PLMGS(S) and encourage them to thrive and succeed in the next lap of their educational journey.



The Objectives of the Award

- to promote commitment to the H.E.A.R.T values that education in PLMGS has been synonymous with;
- to help students overcome financially needy family situations; and
- to encourage PL-Lites to pursue Post-Secondary Education to the highest level possible.



The Criteria of the Award

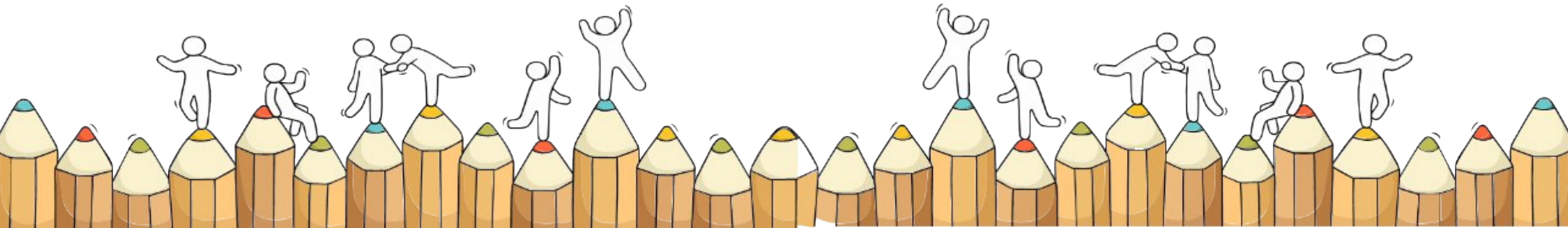
- An old girl from PLMGS(S)
- Admitted to a local Post-Secondary Education Institute
- Good Conduct and Character (Endorsed by Form-teachers and Principal)
- Financially needy situation (to include per capita Income and declaration of receipt of other bursary/financial aid)



The Application Process

- Download the form from PLMGS(S) website (under Financial Assistance Section)
- Complete and submit to PLMGS(S) by 31 May 2026
- Successful applicant will receive S\$2,000 during Founder's Day Thanksgiving Service on 9 Oct, 2026

For Students Considering Private Education



The 3Rs when deciding on Private Education

Reasons

- Why are you furthering your studies?
- What are the job prospects for your preferred course?

Readiness

- How ready are you to further your studies?
- Can you cope with the academic rigour and assignment deadlines?
- Can you fund your studies?

Risks

- Do you know the possible drawbacks?
 - Your expected returns may not exceed the investments you put into your private education.
 - Private schools may make exaggerated claims.
 - Private schools may close due to various reasons.
 - You may not get a full refund if you withdraw from your course.



8 Things You Should Know Before You Enrol in A Private School



School Registration

Ensure the school is registered with SkillsFuture Singapore (SSG). Review the school's registration period, expiry date and its overall registration track record.



Partner Institution

Research on the partner institution conferring the diploma or degree, and whether the qualification is recognised by the industry.

EduTrust Certification Scheme

Is the school EduTrust-certified*? Under the scheme, private schools are assessed for their performance in areas such as school management and provision of student support services.

**Schools are required to obtain EduTrust certification in order to offer external degree programmes*



School Premises

Head down to the campus ground to check the facilities and support services. Observe the study environment too.



Fee Protection

Ask if there is any course fee protection so that you will be able to recover unconsumed course fees should the school close down.



Beyond Course fees

Find out about the course syllabus and materials, graduation rates and employment prospects. Approach the alumni to find out what they think of the school.

Teachers

Check if the teachers are qualified to teach the course.



Internship

If industry attachment is included, find out which organisation you will be attached to, the period of attachment and the alternative arrangement should the attachment become unavailable. Verify the information with the organisation as well.





**Presentation slides will
be uploaded on the
school webpage after
today**



We wish
you all the
Best.



TAKE NOTE

FOR ALL: Please **apply by 22 Dec** and **check your email/portal** for information on interviews or pre-course evaluation etc

FOR ALL 4 NA/G2 STUDENTS ONLY:

Timeframe	Action to be taken
Submit your decision by 22 Dec	All students must submit the Google form to indicate your choice of pathway. You must report to school on 2 Jan 2026 even if you are applying for PFP. https://form.gov.sg/6940dc75e1550df3d5381459



POLYTECHNIC FOUNDATION PROGRAMME (PFP)

1. What is the PFP?

- A foundation year at the polytechnics that:
 - Prepares well-performing Sec 4N(A) students for entry into relevant polytechnic diploma courses
 - Serves as an alternative to Sec 5
- Conducted over two academic semesters at the polytechnics
- Students must pass all PFP modules in order to progress to a Diploma course.

2. Am I Eligible for PFP 2026?

You are eligible for the PFP if you:

- ☐ Sat for GCE N-Level exams as a school candidate in 2025
- ☐ Have obtained an ELMAB3 aggregate of 12 points or less (before deduction of CCA bonus points)
- ☐ Met subject-specific entry requirements as listed on the PFP portal

✓ **If you can check all 3 boxes above, you're eligible!**
(Note: Eligibility does not guarantee you a place in a PFP course)

If you had offered GCE O-Level examination subjects in 2024, you may refer to this table for the equivalent grade to compute your ELMAB3 aggregate:

GCE 'O' Level Grade	Converted Grade
A1-B3	1
B4-C6	2
D7	3
E8	4

3. How do I Apply?

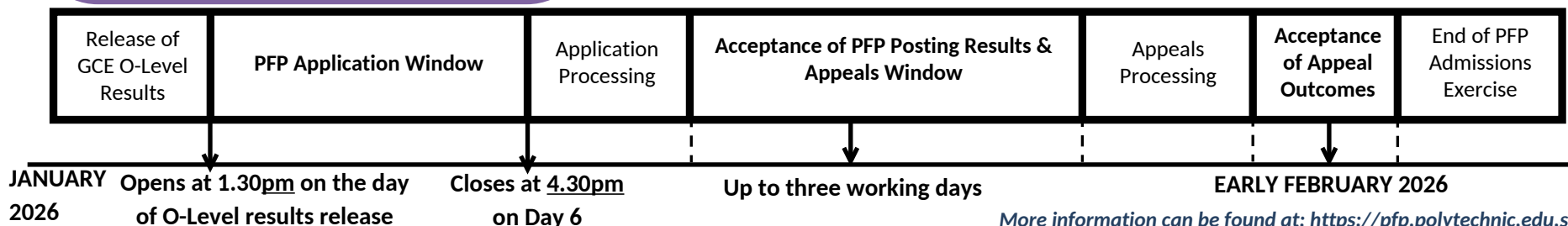
- Upon release of the GCE O-Level results, all PFP-eligible students will receive Form P to inform them of their eligibility to apply for the PFP at this [link](#) using their Singpass.
- You may select up to five course choices.
- Remember to provide updated contact details in your application to allow the polytechnics to contact you if necessary.
(Note: You should continue to attend Sec 5 from 2 January 2026 while applying for PFP.)

4. How Will I be Informed of the Outcome?

- You should log in to the PFP portal to check your application outcomes on the day of PFP posting results release.
- You will then have to indicate if you wish to accept/reject/appeal the offer.
- If you do not select any option, your offer will become invalid and you will be required to continue with your classes in Sec 5/DPP.
(Note: If your appeal is successful, your original offer will be voided, regardless of whether you accept the new PFP offer.)

5. What Happens Next?

- If you accept your offer, you will receive an enrolment package from the polytechnic in February/March 2026.
- The PFP year will start in April 2026.



DIRECT-ENTRY-SCHEME TO POLYTECHNIC PROGRAMME (DPP)

1. What is the DPP?

- Prepares Sec 4N(A) students for progression into selected polytechnic diploma courses via a 2-year *Higher Nitec* programme at ITE, and a 10-week DPP preparatory course
 - Serves as an alternative to Sec 5
- DPP students who meet the minimum qualifying GPA score are guaranteed a place in a polytechnic diploma course mapped to the *Higher Nitec* course. (Refer to <https://jpae.polytechnic.edu.sg/app> for course mapping.)
- About 1,200 places offered across 18 *Higher Nitec* courses

2. Am I eligible for DPP?

- ☐ Sec 4N(A) student who has sat for GCE N-Level exams in 2025
 - ☐ Obtained ELMAB3 aggregate of 19 points or less (before deduction of CCA bonus points)
 - ☐ Meet course-specific entry requirements
- ☒ **If you can check all 3 boxes above, you're eligible!** (Note: Eligibility does not guarantee placement.)

If you have offered GCE O-Level examination subjects in 2025, you may refer to this table for the equivalent grade to compute your ELMAB3 aggregate:

GCE O-Level Grade	Converted Grade
A1-B3	1
B4-C6	2
D7	3
E8	4

3. How do I apply?

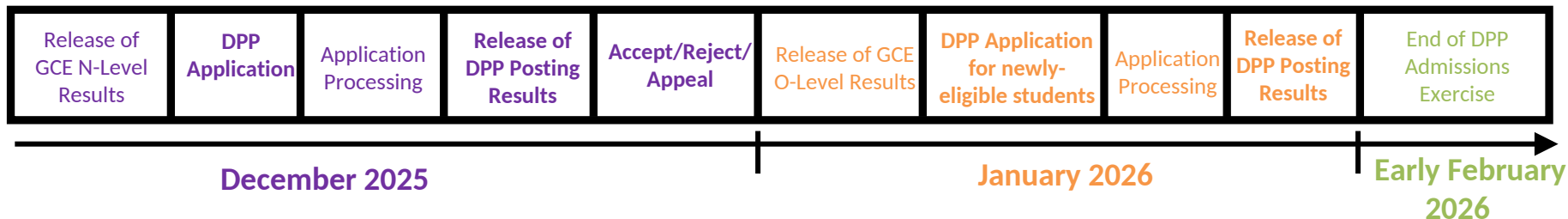
- Upon release of the GCE N-Level results, all DPP-eligible students may apply for DPP *Higher Nitec* courses via the ITE website (<https://www.ite.edu.sg>).
- You may select up to 12 course choices.
- Remember to provide updated contact details in your application so that ITE can contact you if necessary.

4. How will I know the outcome?

- You should check your DPP posting results online on the morning of the release of the DPP posting results.
- You will then have to indicate if you wish to accept/reject/appeal the offer.
- Your offer will be void if you do not accept the offer by the stipulated date. You will be required to continue with your classes in Sec 5, or with your ~~Nitec~~ *Higher Nitec* course if your application via JIE 'N' is successful

5. What happens next?

Upon accepting your DPP offer, you will attend a 10-week DPP preparatory programme starting from Jan 2026.



More information can be found at: <https://www.ite.edu.sg/secondary-school-students/ite-full-time-courses/higher-nitec-for-dpp>